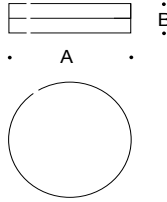


Tools Required:

- Flat head screw driver medium
- Phillips head screw driver medium
- 3mm hex key



Dimensions

A: 10 3/8"

B: 2 1/2"



Overview:

LED Watts: 14.2W
 System Watts: 18.0W
 Controllability: 0-10V, dimmable down to 0.1%
 Weight: 6.8 lbs.

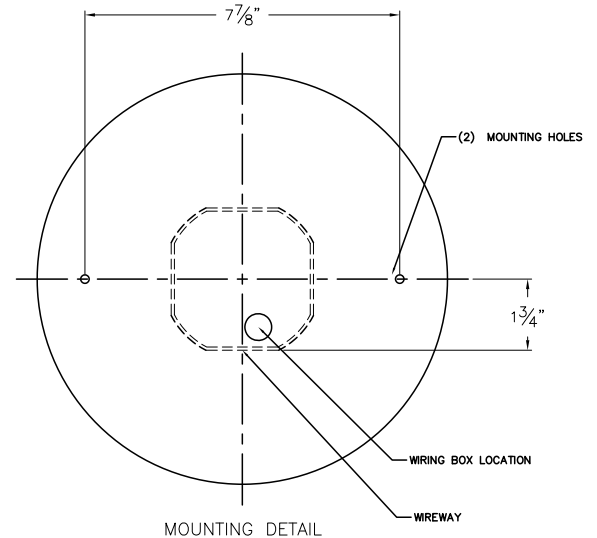
Notice to Installer:

1. See page 2 for specific product safety warnings.
2. Select the desired trim ring or housing finish by using appropriate code number as suffix:
 12 127.1 - White
 12 127.2 - Stainless steel
 12 127.3 - Polished aluminum
3. Mounts to the wall or ceiling OVER standard recessed 4" octagonal junction box (by others).
4. LEDs are high-quality electronic components! Please avoid touching the light output opening of the LED directly during installation.

Installation:

1. Remove glass diffuser from luminaire by unscrewing counter-clockwise.
2. Remove the LED board from the luminaire by unscrewing (3) 3mm hex screws, disconnect quick connect, and set safely aside.
3. Feed luminaire wires through back of luminaire housing that will attach to the mounting surface.
4. Make supply wiring and luminaire wiring connections inside the junction box:
 MAIN VOLTAGE SUPPLY WIRE TO BLACK LUMINAIRE WIRE
 NEUTRAL (COMMON) SUPPLY WIRE TO WHITE LUMINAIRE WIRE
 GREEN GROUND WIRE TO GREEN LUMINAIRE WIRE
 0-10V Dimming (if applicable):
 DIMMING CONTROL WIRE (+) TO POSITIVE DRIVER PURPLE DIM CONTROL WIRE
 DIMMING CONTROL WIRE (-) TO NEGATIVE DRIVER GRAY DIM CONTROL WIRE
5. Mount luminaire housing directly to the wall or ceiling OVER standard 4" octagonal junction box using hardware by others. See Figure 1 for mounting hole locations.
6. Reconnect LED board using quick connect, and reattach to luminaire housing using (3) 3mm hex screws making to not tighten too tightly.
7. Replace luminaire diffuser by screwing into housing clockwise.

Figure 1: Mounting Detail



Accessories

Please refer to the appropriate accessory installation sheet for further instruction when applicable.

Maintenance:

Clean regularly with solvent-free cleaner removing dust and debris.

Replacement Parts

See label inside of fixture for LED replacement part number.

Consult factory for all other replacement components.

Product Safety Warnings:

THIS PRODUCT MUST BE INSTALLED IN ACCORDANCE WITH THE APPLICABLE INSTALLATION CODE BY A PERSON FAMILIAR WITH THE CONSTRUCTION AND OPERATION OF THE PRODUCT AND THE HAZARDS INVOLVED. SUITABLE FOR DAMP LOCATIONS. MIN 90°C SUPPLY CONDUCTORS.

CE PRODUIT DOIT ÊTRE INSTALLÉ SELON LE CODE D'INSTALLATION PERTINENT, PAR UNE PERSONNE QUI CONNAÎT BIEN LE PRODUIT ET SON FONCTIONNEMENT AINSI QUE LES RISQUES INHÉRENTS. CONVIENT AUX EMPLACEMENTS HUMIDE.

LES FILS D'ALIMENTATION 90°C MIN.