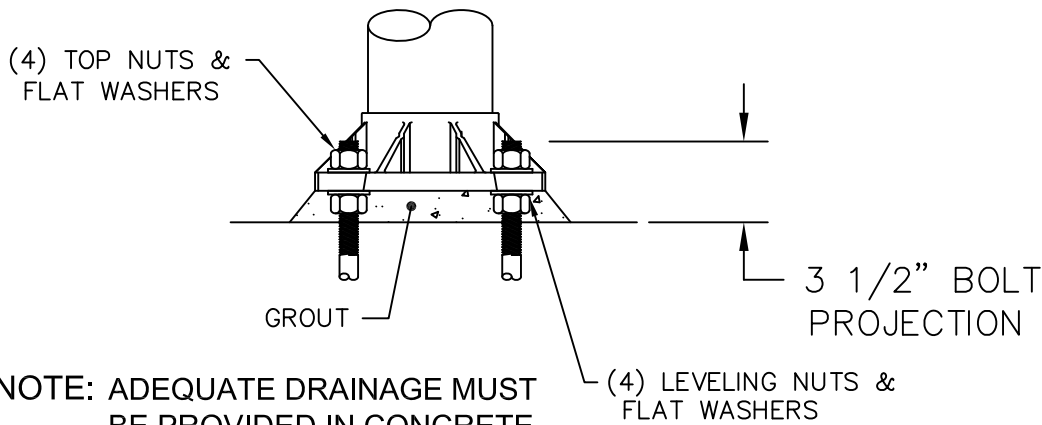
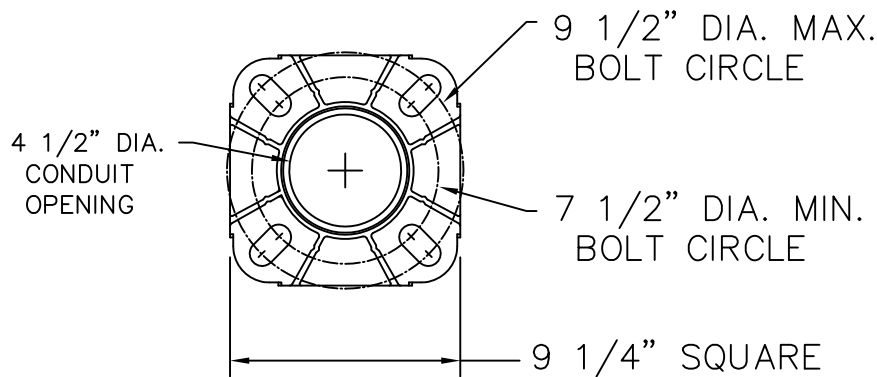


NOTE: NUT COVERS
NOT SHOWN



NOTE: ADEQUATE DRAINAGE MUST
BE PROVIDED IN CONCRETE
FOUNDATION OR GROUT.

BASE DETAIL

**(4) 3/4" X 17" ANCHOR BOLTS &
MTG. TEMPLATE SUPPLIED
WITH POLE OR IN ADVANCE**

3" TO 5" DIA.
CUSTOM GANTRY
TAPERED ALUMINUM
POLE w/FIXED BASE
BY BEGA

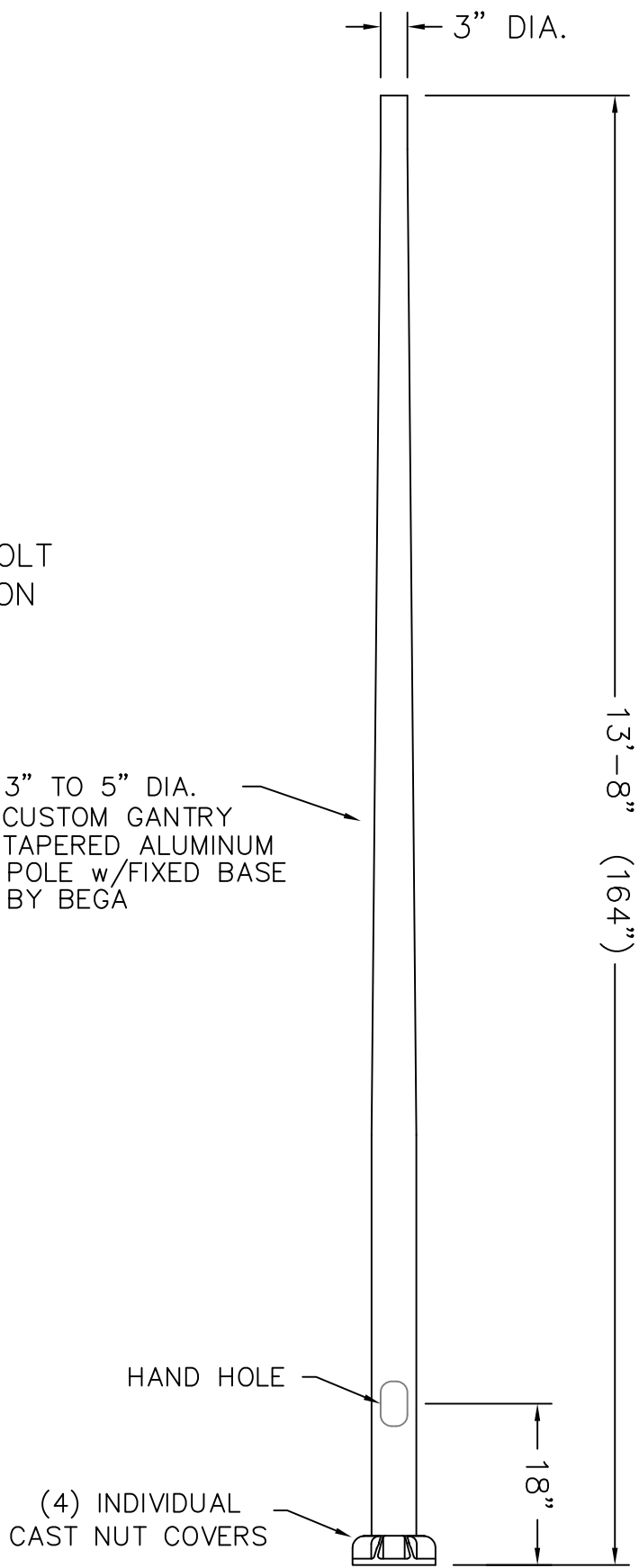
NOTE: FIXED BASE POLES ARE NOT COMPATIBLE
WITH BEGA POLE BASE MOUNTED (PBM)
POLE TOP LUMINAIRES.

DISCLAIMER

BEGA-US WARRANTS THE SPECIFIC ANCHOR BOLTS & POLE COMBINATION ACCORDING TO THE PRODUCT NUMBER(S) AND DESCRIPTION(S). STRUCTURAL CHANGES TO THE POLE REQUESTED BY THE CUSTOMER INCLUDING CHANGES TO POLE LENGTH, MAY AFFECT THE COMPATIBILITY OF THE ANCHOR BOLTS AND CORRESPONDING POLES. BEGA-US IS NOT RESPONSIBLE FOR THE INCOMPATIBILITY OF THE ANCHOR BOLTS AND POLES RESULTING FROM SUCH STRUCTURAL CHANGES WITHOUT REVIEW BY THE BEGA-US ENGINEERING DEPT. THIS INCLUDES, BUT IS NOT LIMITED TO; ANY LABOR CHARGES, CHARGES FOR REPLACEMENT MATERIALS AND SHIPPING.

NOTE:

POLES ARE PROVIDED WITH A CUSTOM TAPER FOR THE ADJUSTABLE GANTRY SYSTEM. THE POLES ARE RATED FOR A MAXIMUM 100 MPH WIND SPEED WITH A 1.3 GUST FACTOR. FOR A HIGHER WIND SPEED PLEASE CONSULT FACTORY.



This print contains confidential information which is the property of BEGA/US. By accepting this information, the borrower agrees that it will not be used for any other purpose other than that which is was loaned.

Catalog No.: 1308GP
Description: POLE - Aluminum Custom 'Gantry' Tapered 13'-8" Tall
Drawn by: Bob Mc Date: 3/25/14 File Name: 1308GP
SCALE: NONE — DO NOT SCALE DRAWING

BEGA

1000 Bega Way
Carpinteria, Ca. 93013
(805) 684-0533