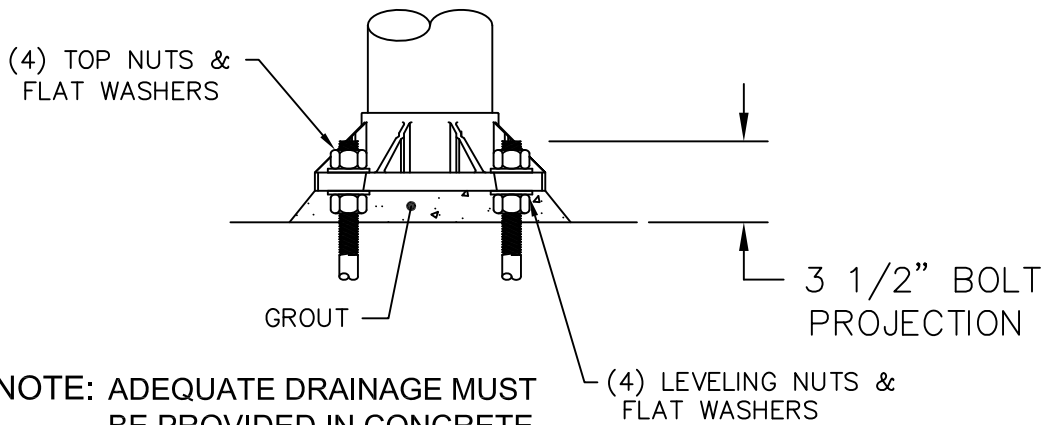
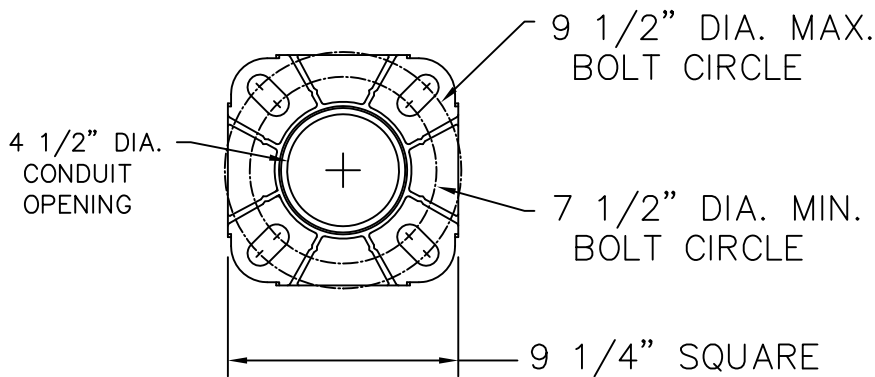


NOTE: NUT COVERS  
NOT SHOWN



NOTE: ADEQUATE DRAINAGE MUST  
BE PROVIDED IN CONCRETE  
FOUNDATION OR GROUT.

## BASE DETAIL

**(4) 3/4" X 17" ANCHOR BOLTS &  
MTG. TEMPLATE SUPPLIED  
WITH POLE OR IN ADVANCE**

3" TO 5" DIA.  
CUSTOM GANTRY  
TAPERED ALUMINUM  
POLE w/FIXED BASE  
BY BEGA

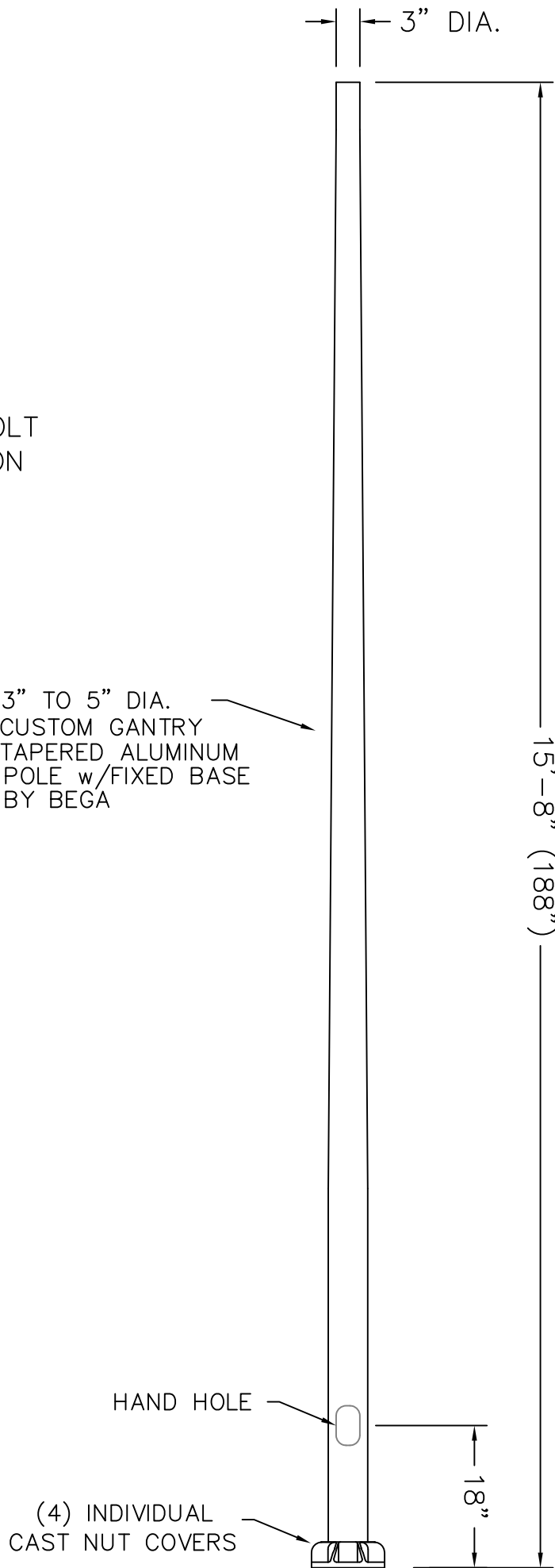
NOTE: FIXED BASE POLES ARE NOT COMPATIBLE  
WITH BEGA POLE BASE MOUNTED (PBM)  
POLE TOP LUMINAIRES.

## DISCLAIMER

BEGA-US WARRANTS THE SPECIFIC ANCHOR BOLTS & POLE COMBINATION ACCORDING TO THE PRODUCT NUMBER(S) AND DESCRIPTION(S). STRUCTURAL CHANGES TO THE POLE REQUESTED BY THE CUSTOMER INCLUDING CHANGES TO POLE LENGTH, MAY AFFECT THE COMPATIBILITY OF THE ANCHOR BOLTS AND CORRESPONDING POLES. BEGA-US IS NOT RESPONSIBLE FOR THE INCOMPATIBILITY OF THE ANCHOR BOLTS AND POLES RESULTING FROM SUCH STRUCTURAL CHANGES WITHOUT REVIEW BY THE BEGA-US ENGINEERING DEPT. THIS INCLUDES, BUT IS NOT LIMITED TO; ANY LABOR CHARGES, CHARGES FOR REPLACEMENT MATERIALS AND SHIPPING.

### NOTE:

POLES ARE PROVIDED WITH A CUSTOM TAPER FOR THE ADJUSTABLE GANTRY SYSTEM. THE POLES ARE RATED FOR A MAXIMUM 100 MPH WIND SPEED WITH A 1.3 GUST FACTOR. FOR A HIGHER WIND SPEED PLEASE CONSULT FACTORY.



This print contains confidential information which is the property of BEGA/US. By accepting this information, the borrower agrees that it will not be used for any other purpose other than that which is was loaned.

Catalog No.: **1508GP**

Description: **POLE - Aluminum Custom 'Gantry' Tapered 15'-8" Tall**

Drawn by: **Bob Mc** Date: **3/25/14** File Name: **1508GP**

SCALE: NONE — DO NOT SCALE DRAWING

# BEGA

1000 Bega Way  
Carpinteria, Ca. 93013  
(805) 684-0533