

Type:
 Project:
 Options:
 Modified:
 Luminaire:
 Fixture EPA:
 GCO: ☐
 GFI: ☐

Approval:

1708GP 3" – 6" Tapered round fixed base pole

Wall thickness: .156"

Shaft: Extruded from all new seamless 6063 aluminum alloy tubing, heat treated to a T-6 condition. Each shaft shall have a minimum 24" straight section at the top to accommodate BEGA gantry system clamps

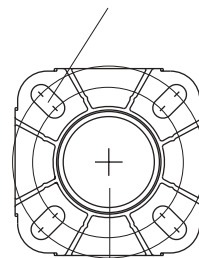
Anchor base: Cast aluminum A356 alloy, heat treated to a T-6 condition. The anchor base casting and shaft shall be joined by a continuous circumferential weld at the inside bottom of the anchor base.

Anchor bolts: Four (4) 3/4"x17" galvanized steel anchor bolts supplied with double nuts and flat washers. Maximum bolt projection 3 1/2". A356 aluminum nut covers shall be included with each anchor base, unless otherwise specified.

Disclaimer

BEGA/US warrants the specific anchor bolts and pole combination according to the product number(s) and description(s) indicated on this submittal sheet. Structural changes to the pole requested by the customer, including changes to pole length, may affect the compatibility of the anchor bolts and corresponding poles. BEGA/US is not responsible for the incompatibility of the anchor bolts and poles resulting from such structural changes without review by the BEGA/US engineering department. This includes, but is not limited to, any labor charges, charges for replacement materials and shipping.

4 slots @ 90° to
 accommodate 8 3/4" min.
 to 10 1/4" max. bolt circle



5 1/2" conduit opening

