

Application

Wall luminaires for a host of applications – arranged individually or in groups. The luminaires can be installed in a horizontal or vertical position.

Materials

Hand-blown three-ply opal glass  
Aluminum housing

NRTL listed to North American Standards, for interior use only

Weight: 6.0 lbs.

Electrical

Operating voltage	120-277VAC
Minimum start temperature	-30° C
LED module wattage	19.5 W
System wattage	29.0 W
Controllability	0-10V dimmable
Color rendering index	Ra > 90
Luminaire lumens	2197 lm
LED service life (L70)	60000 hrs

LED color temperature

- 4000K (K4)
- 3500K (K35)
- 3000K (K3)
- 2700K (K27)

BEGA can supply you with suitable LED replacement modules for up to 20 years after the purchase of LED luminaires - see website for details

Finish

Select the desired material finish by using appropriate code number as suffix.

Available colors

- White (.1)
- Stainless steel (.2)
- Chrome (.3)

Type:

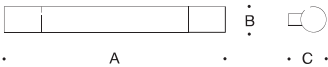
BEGA Product:

Project:

Modified:

Included (available for pre-shipment)

B19537      Narrow opening wiring box



Linear wall luminaire · Opal glass				
	LED	A	B	C
B23259	19.5 W	35 1/2	2 3/4	4 1/8

