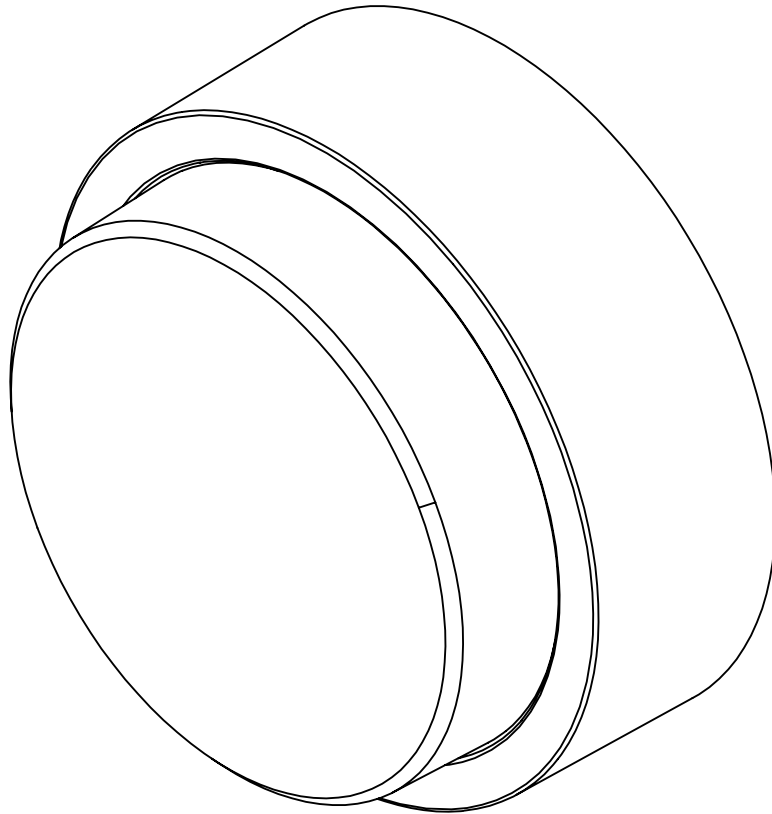
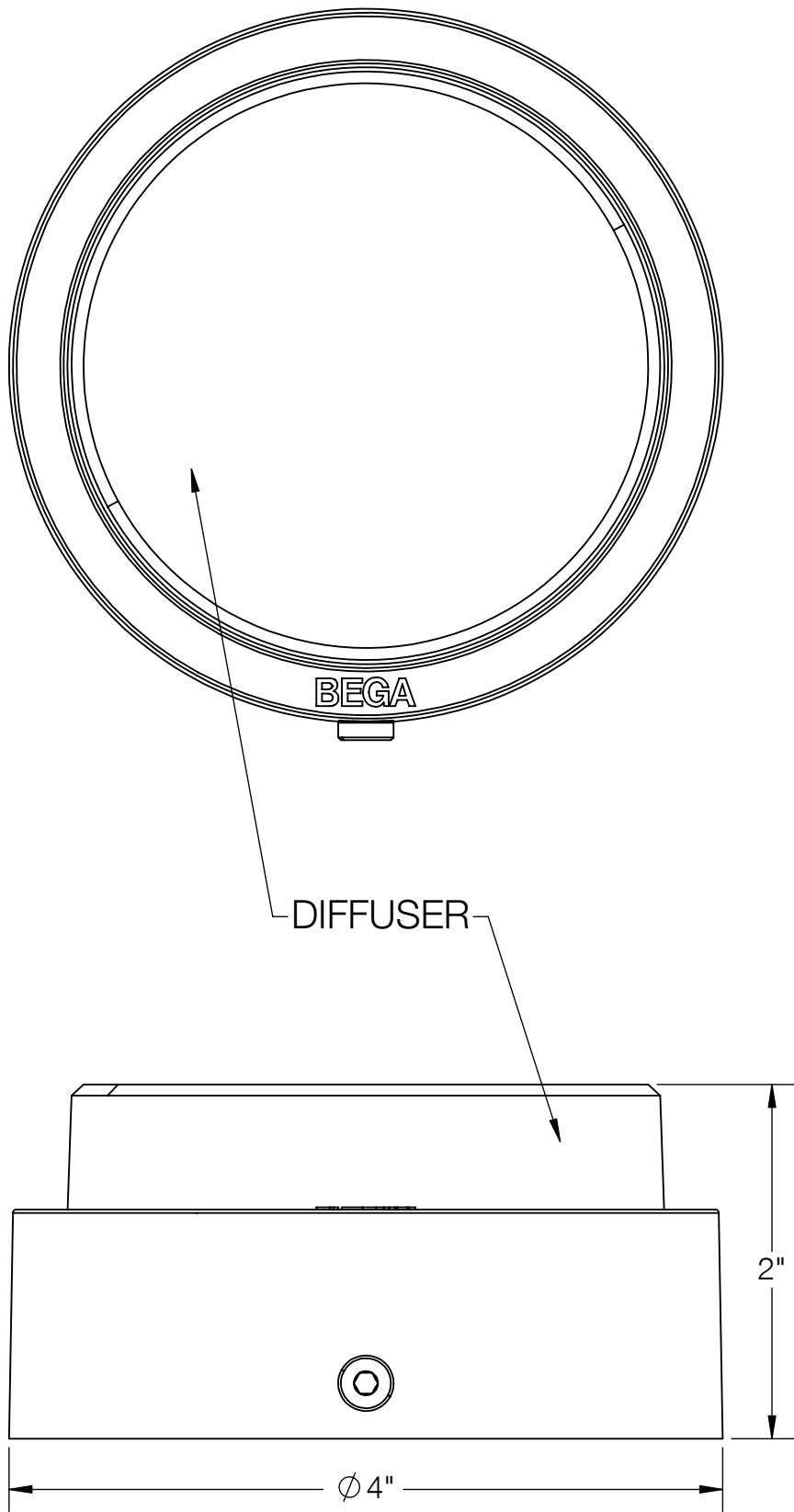
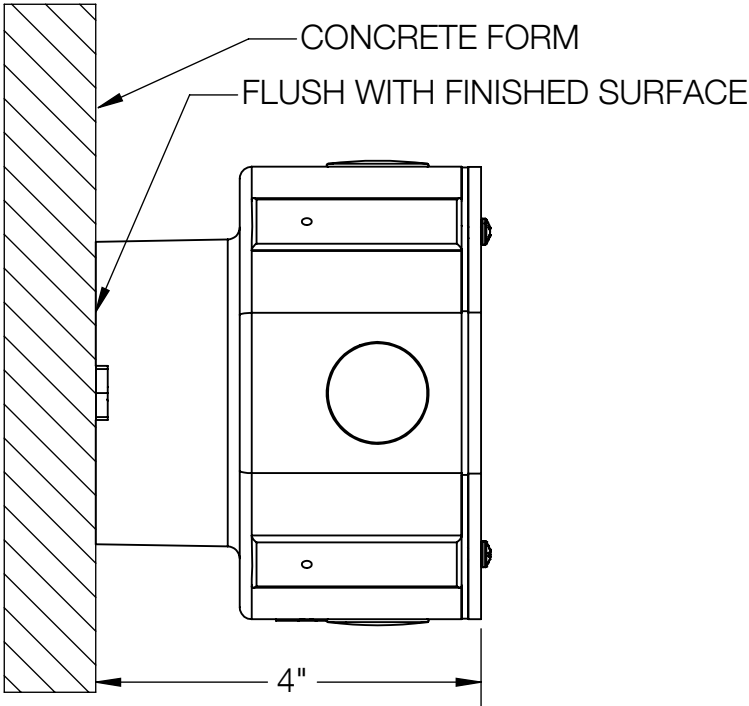
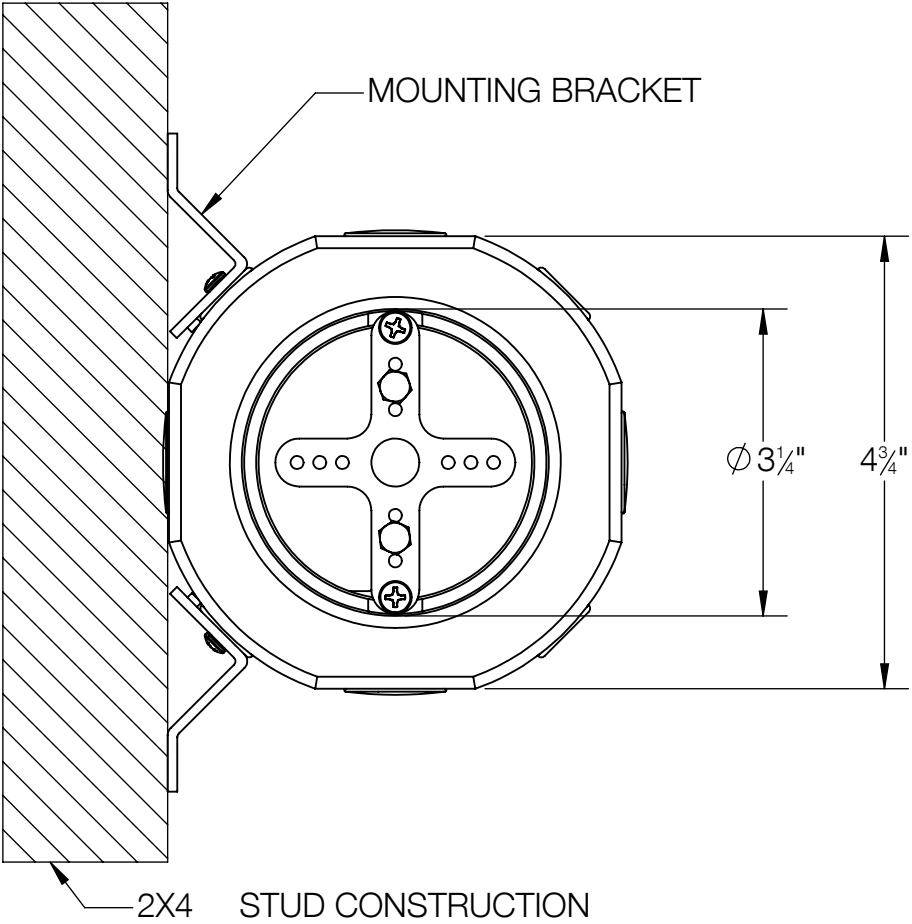


REV	CHANGED BY	DESCRIPTION	DATE

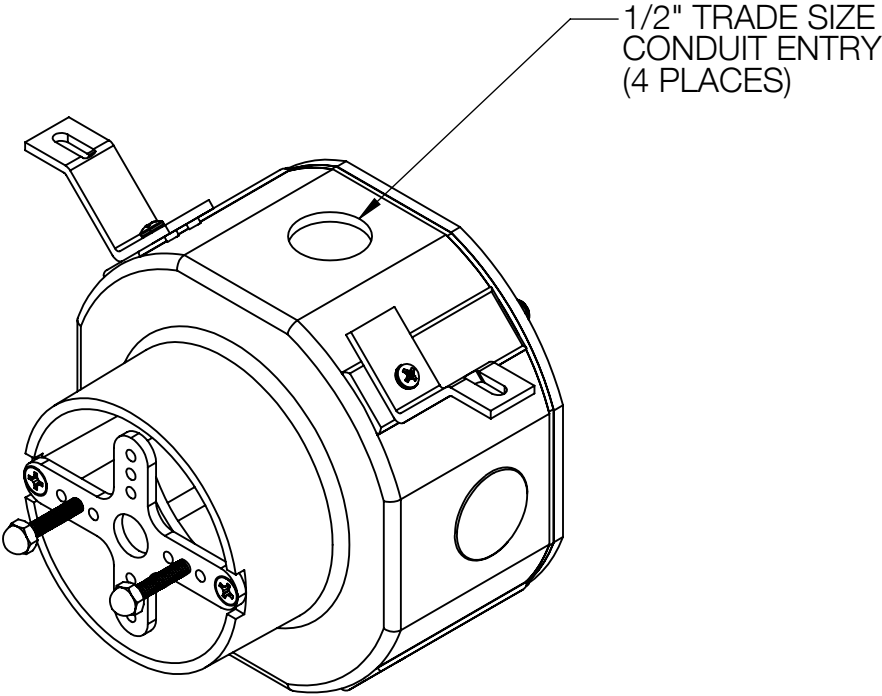


BEGA			
1000 BEGA Way, Carpinteria, California 93013		P (805) 684-0533 - www.bega-us.com	
APPROVED: _____ DATE: _____		DESCRIPTION: IMPACT RESISTANT WALL AND CEILINGLUMINAIRE - UNSHEILDED	
TYPE: _____			
PROPRIETARY AND CONFIDENTIAL THE INFORMATION CONTAINED IN THIS DRAWING IS THE SOLE PROPERTY OF BEGA NORTH AMERICA, INC. ANY REPRODUCTION IN PART OR AS A WHOLE WITHOUT THE WRITTEN PERMISSION OF BEGA NORTH AMERICA, INC. IS PROHIBITED.		SIZE B	PART NO. B24037
		REV -	
NOT TO SCALE		2/15/2023	SHEET 1 OF 2

REV	CHANGED BY	DESCRIPTION	DATE



CONCRETE CONSTRUCTION



- NOTES:
1. SMALL OPENING WIRING BOX IS REQUIRED FOR INSTALLATION
 2. CROSS BRACKET INCLUDED WITH WIRING BOX IS NEEDED FOR INSTALLATION OF 24037 LUMINAIRE.

BEGA			
1000 BEGA Way, Carpinteria, California 93013		P (805) 684-0533 - www.bega-us.com	
APPROVED: _____ DATE: _____		DESCRIPTION: SMALL OPENING WIRING BOX	
TYPE: _____			
PROPRIETARY AND CONFIDENTIAL		SIZE	REV
THE INFORMATION CONTAINED IN THIS DRAWING IS THE SOLE PROPERTY OF BEGA NORTH AMERICA, INC. ANY REPRODUCTION IN PART OR AS A WHOLE WITHOUT THE WRITTEN PERMISSION OF BEGA NORTH AMERICA, INC. IS PROHIBITED.		B	-
		PART NO.	
		19538	
		NOT TO SCALE	SHEET 2 OF 2
		12/15/2022	