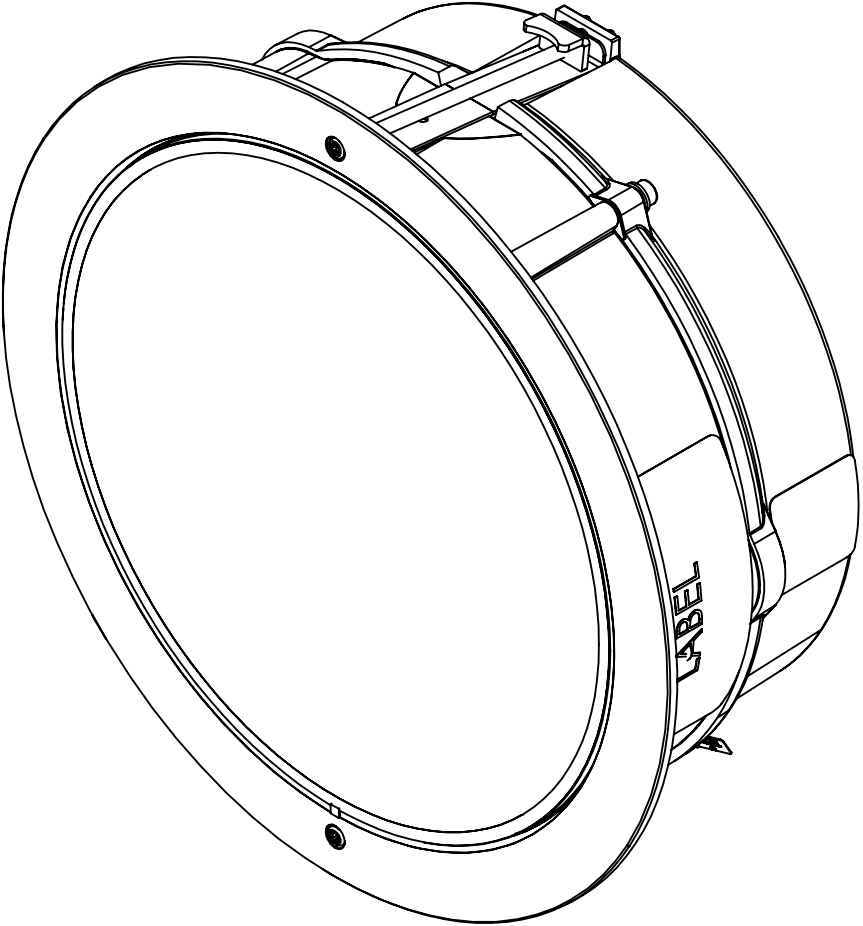


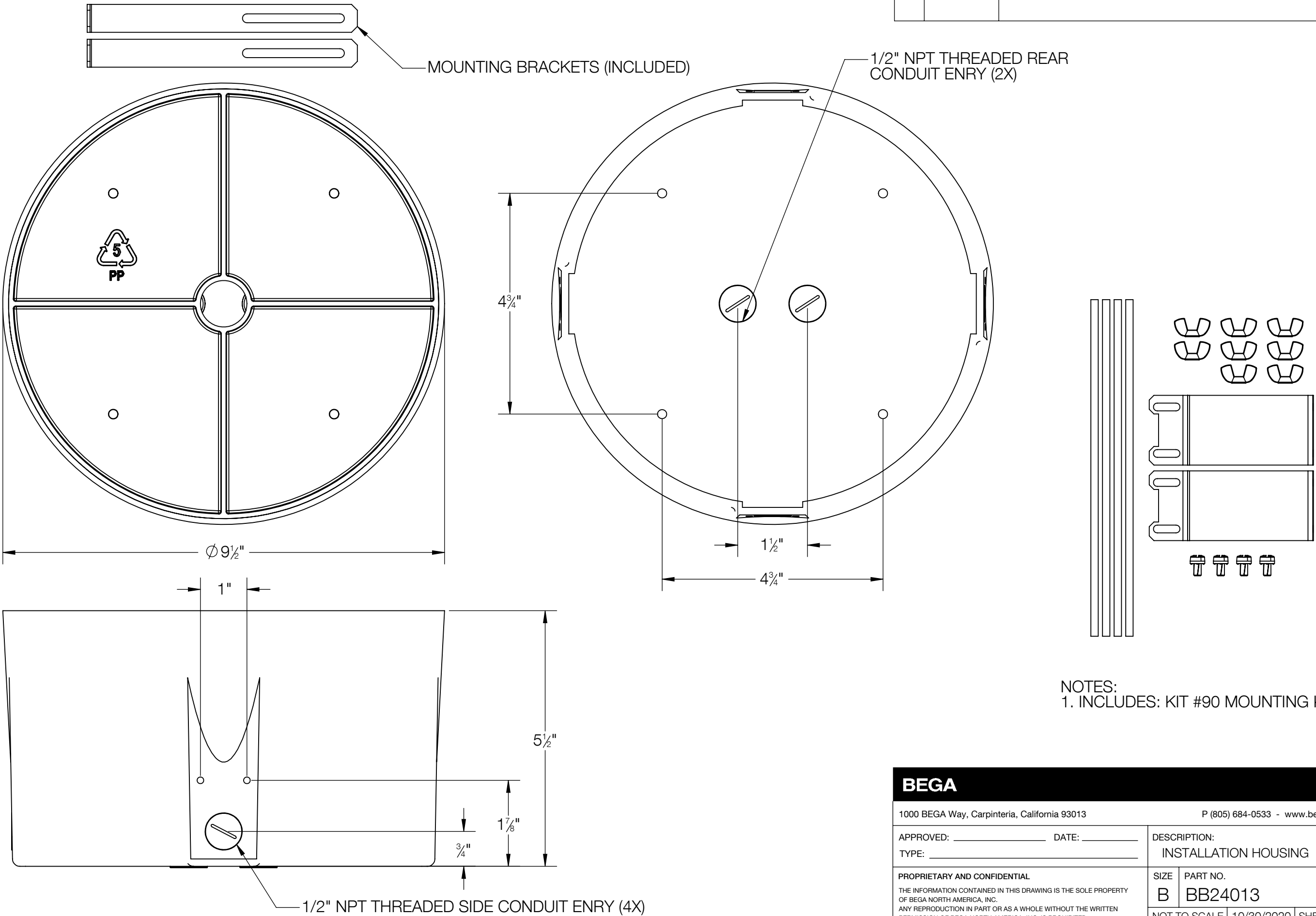
REV	CHANGED BY	DESCRIPTION	DATE



NOTES:
1. INCLUDES: BB24013 INSTALLATION HOUSING

BEGA					
1000 BEGA Way, Carpinteria, California 93013			P (805) 684-0533 - www.bega-us.com		
APPROVED: _____		DATE: _____		DESCRIPTION: RECESSED WALL LUMINIARE - DIRECTED LIGHT	
TYPE: _____					
PROPRIETARY AND CONFIDENTIAL THE INFORMATION CONTAINED IN THIS DRAWING IS THE SOLE PROPERTY OF BEGA NORTH AMERICA, INC. ANY REPRODUCTION IN PART OR AS A WHOLE WITHOUT THE WRITTEN PERMISSION OF BEGA NORTH AMERICA, INC. IS PROHIBITED.			SIZE	PART NO.	REV
			B	24112	-
			NOT TO SCALE	10/30/2020	SHEET 1 OF 2

REV	CHANGED BY	DESCRIPTION	DATE



NOTES:
1. INCLUDES: KIT #90 MOUNTING KIT

BEGA			
1000 BEGA Way, Carpinteria, California 93013		P (805) 684-0533 - www.bega-us.com	
APPROVED: _____ DATE: _____		DESCRIPTION: INSTALLATION HOUSING	
TYPE: _____			
PROPRIETARY AND CONFIDENTIAL THE INFORMATION CONTAINED IN THIS DRAWING IS THE SOLE PROPERTY OF BEGA NORTH AMERICA, INC. ANY REPRODUCTION IN PART OR AS A WHOLE WITHOUT THE WRITTEN PERMISSION OF BEGA NORTH AMERICA, INC. IS PROHIBITED.		SIZE B	REV -
		PART NO. BB24013	
		NOT TO SCALE	10/30/2020
		SHEET 2 OF 2	