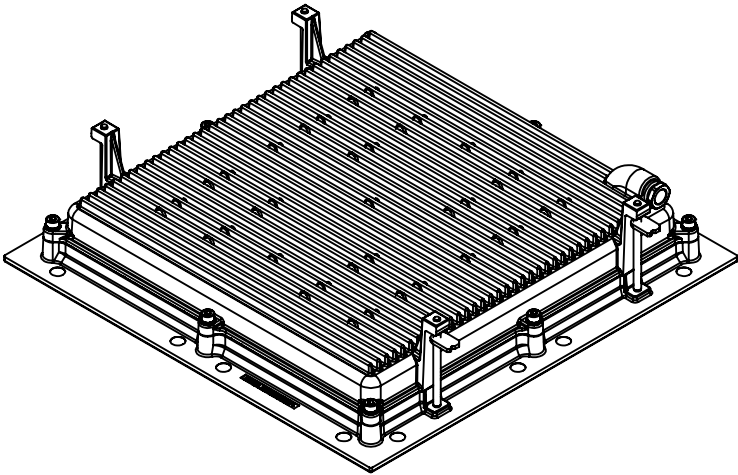
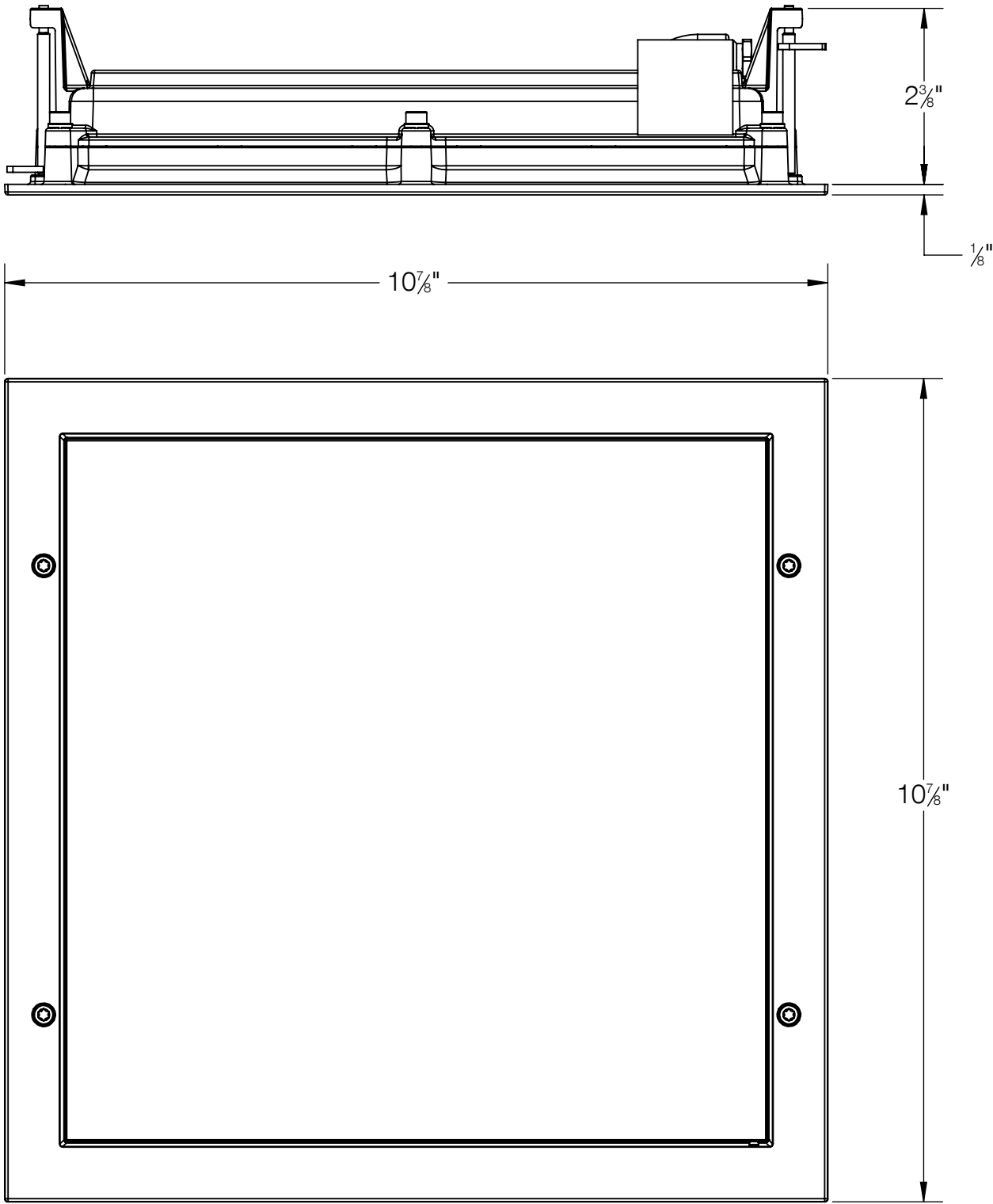


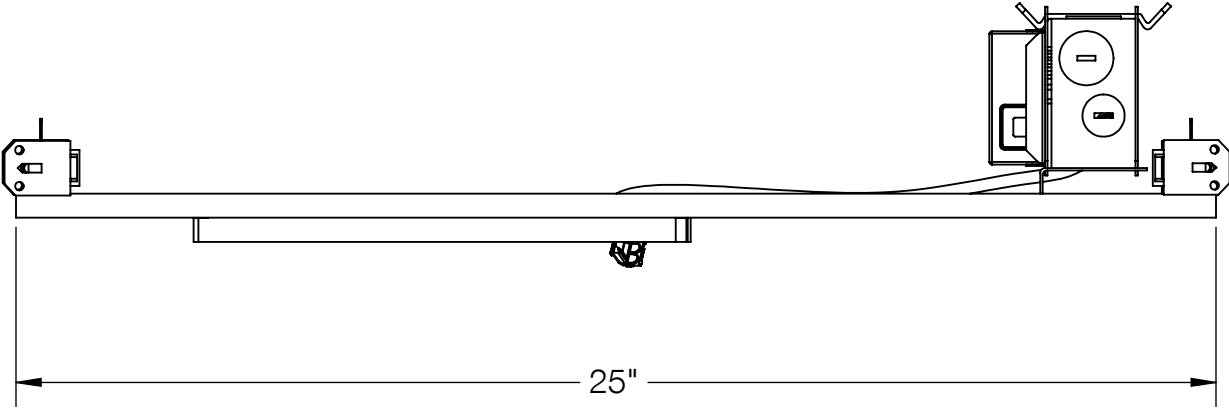
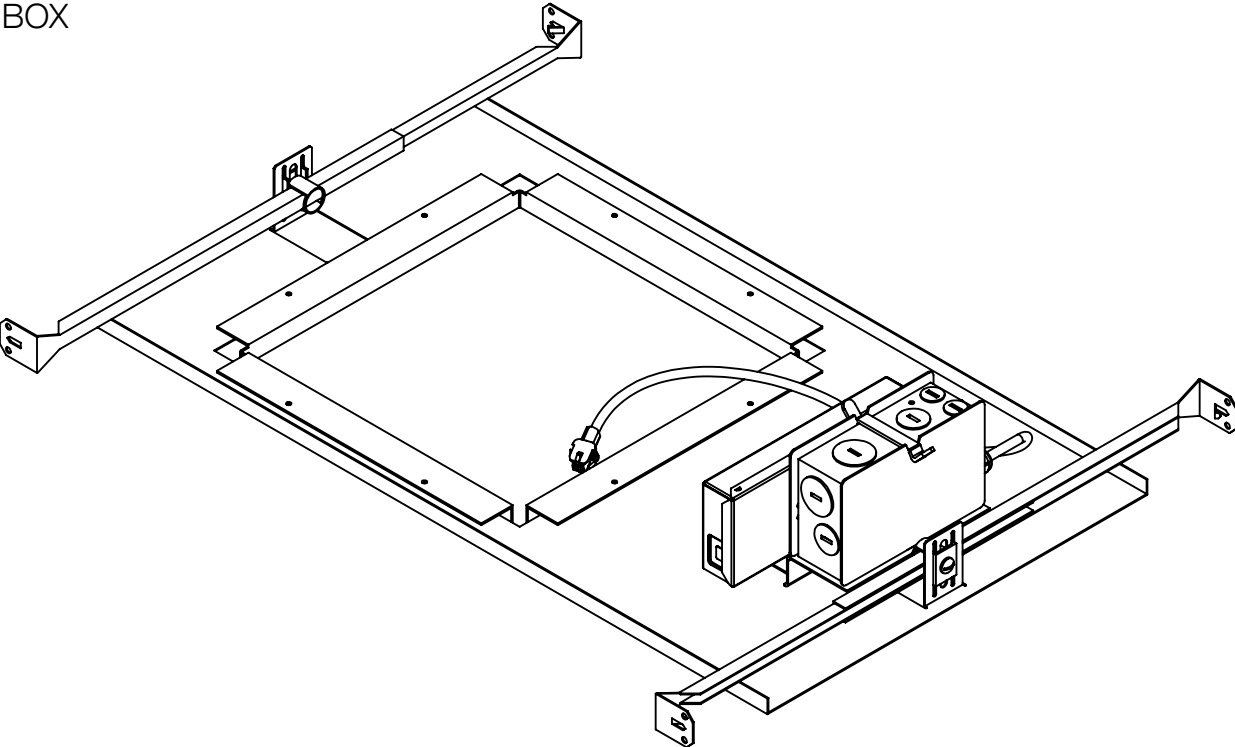
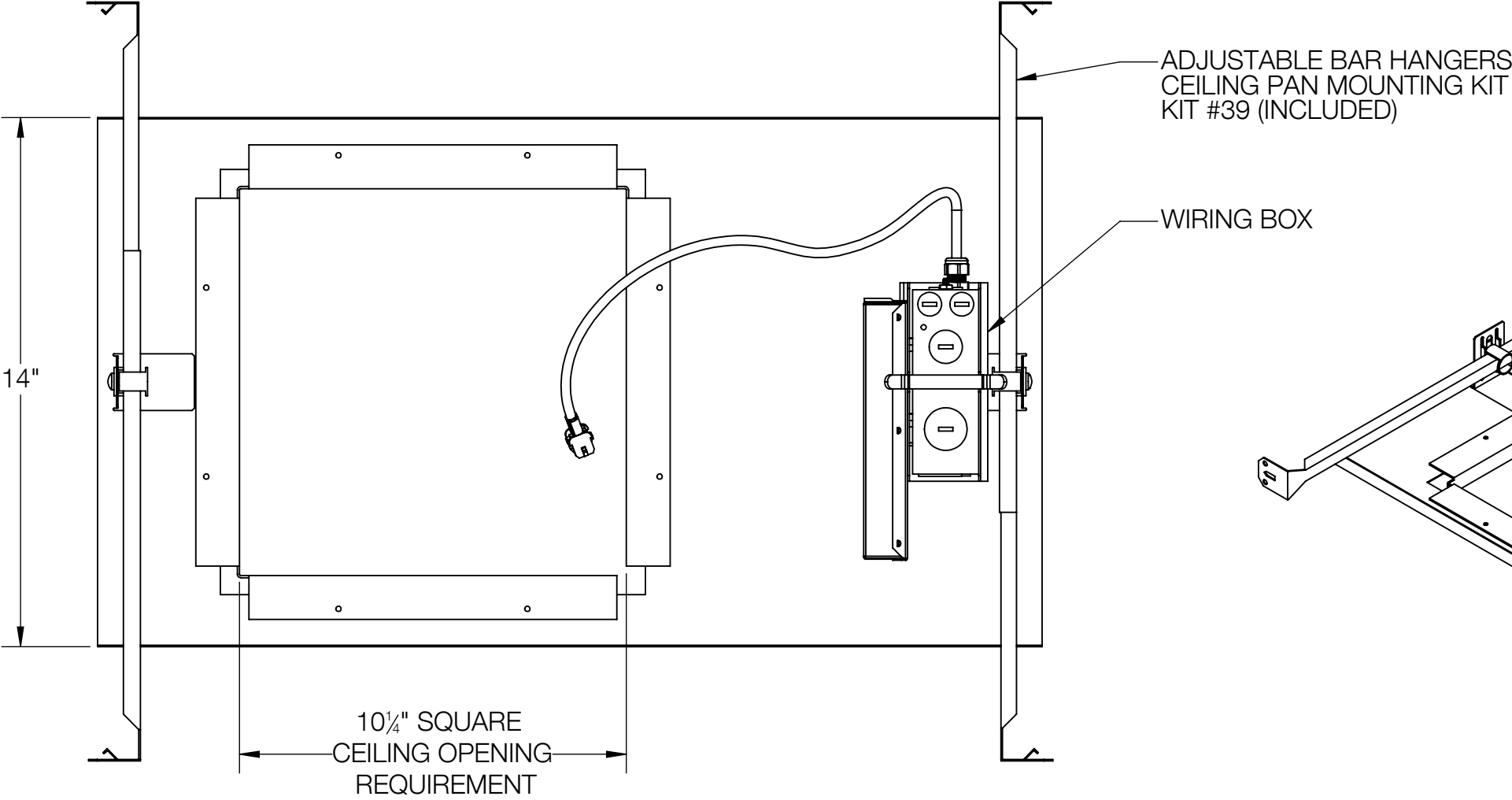
REV	CHANGED BY	DESCRIPTION	DATE



- NOTES:
- 1. INCLUDES CP24145 - CEILING PAN
 - 2. INCLUDES KIT #39 - CEILING PAN MOUNTING KIT
 - 3. FIXTURE REQUIRES A CEILING OPENING OF 10-1/4" SQUARE
 - 4. MINIMUM CEILING THICKNESS 1/4"
 - 5. MAXIMUM CEILING THICKNESS 1-3/4"

BEGA				
1000 BEGA Way, Carpinteria, California 93013			P (805) 684-0533 - www.bega-us.com	
APPROVED: _____ DATE: _____		DESCRIPTION: SQUARE DOWNLIGHT - ASYMMETRIC		
TYPE: _____				
PROPRIETARY AND CONFIDENTIAL THE INFORMATION CONTAINED IN THIS DRAWING IS THE SOLE PROPERTY OF BEGA NORTH AMERICA, INC. ANY REPRODUCTION IN PART OR AS A WHOLE WITHOUT THE WRITTEN PERMISSION OF BEGA NORTH AMERICA, INC. IS PROHIBITED.		SIZE	PART NO.	REV
		B	24147	-
		NOT TO SCALE	2/28/2022	SHEET 1 OF 2

REV	CHANGED BY	DESCRIPTION	DATE



BEGA

1000 BEGA Way, Carpinteria, California 93013

P (805) 684-0533 - www.bega-us.com

APPROVED: _____ DATE: _____

DESCRIPTION: CEILING PAN

TYPE: _____

PROPRIETARY AND CONFIDENTIAL
THE INFORMATION CONTAINED IN THIS DRAWING IS THE SOLE PROPERTY
OF BEGA NORTH AMERICA, INC.
ANY REPRODUCTION IN PART OR AS A WHOLE WITHOUT THE WRITTEN
PERMISSION OF BEGA NORTH AMERICA, INC. IS PROHIBITED.

SIZE	PART NO.	REV
B	CP24145	-
NOT TO SCALE	2/28/2022	SHEET 2 OF 2