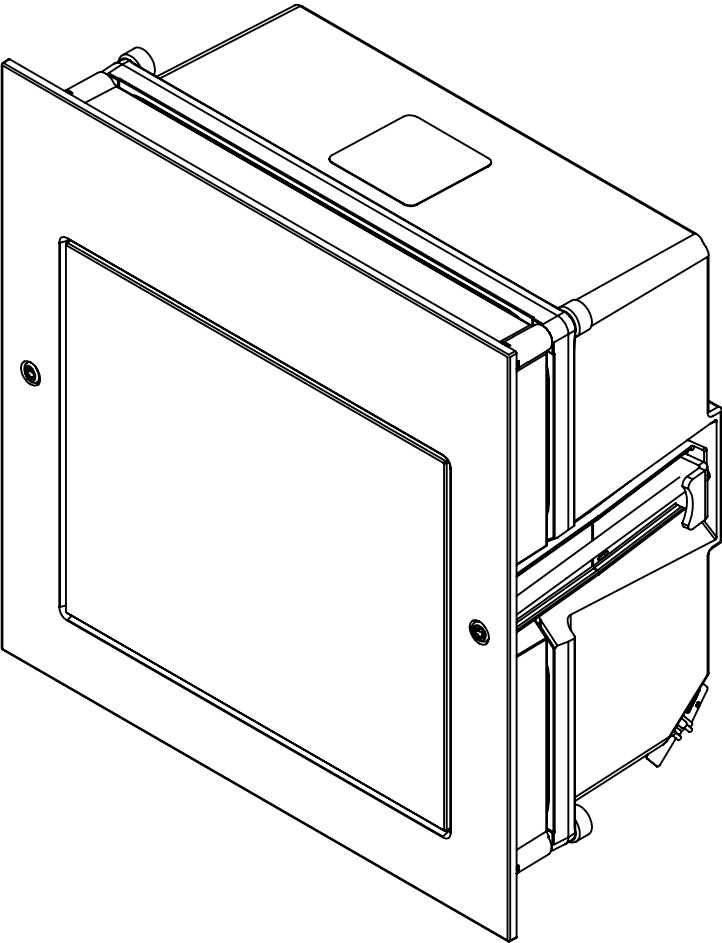
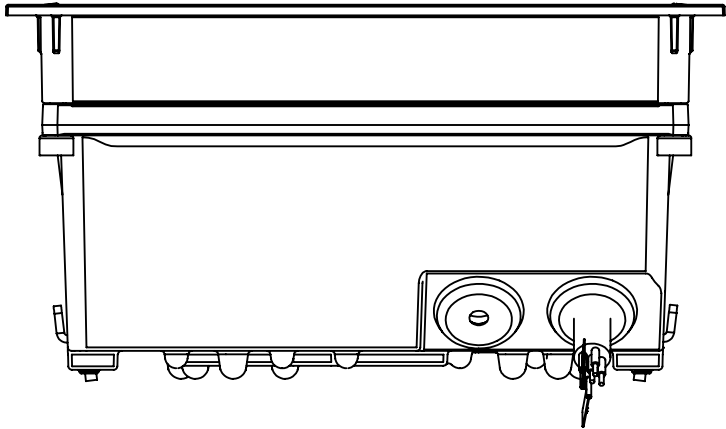
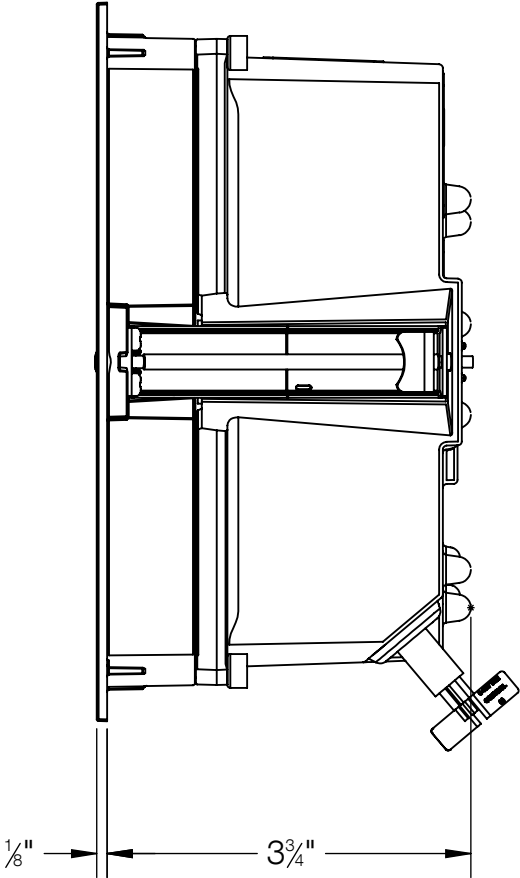
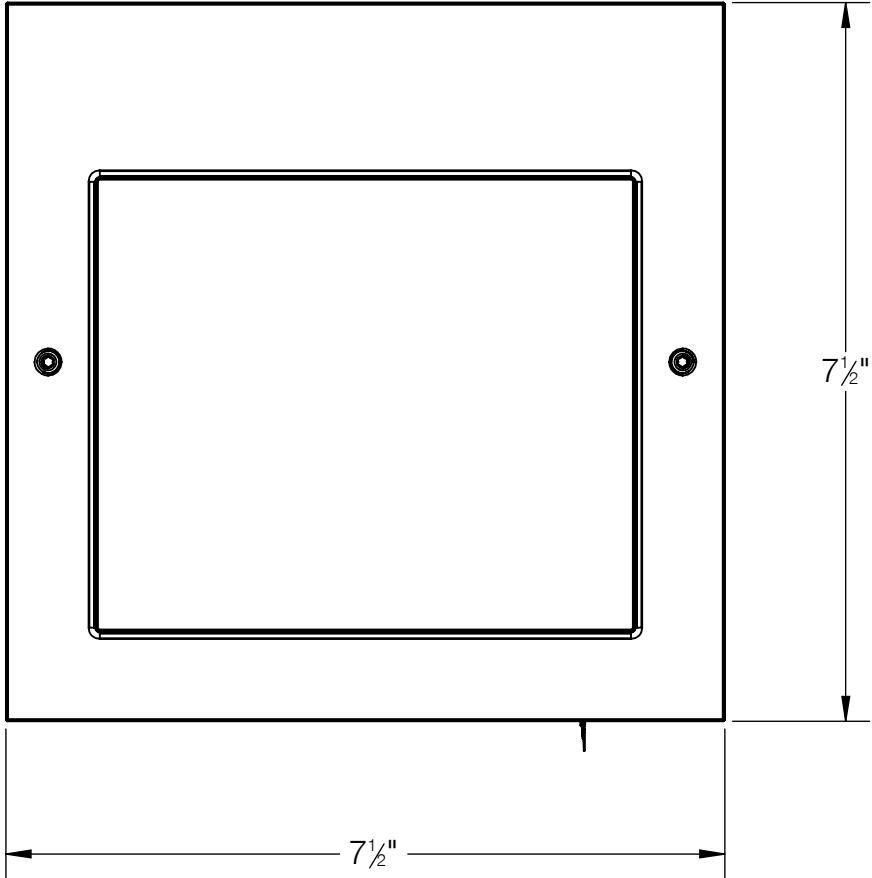


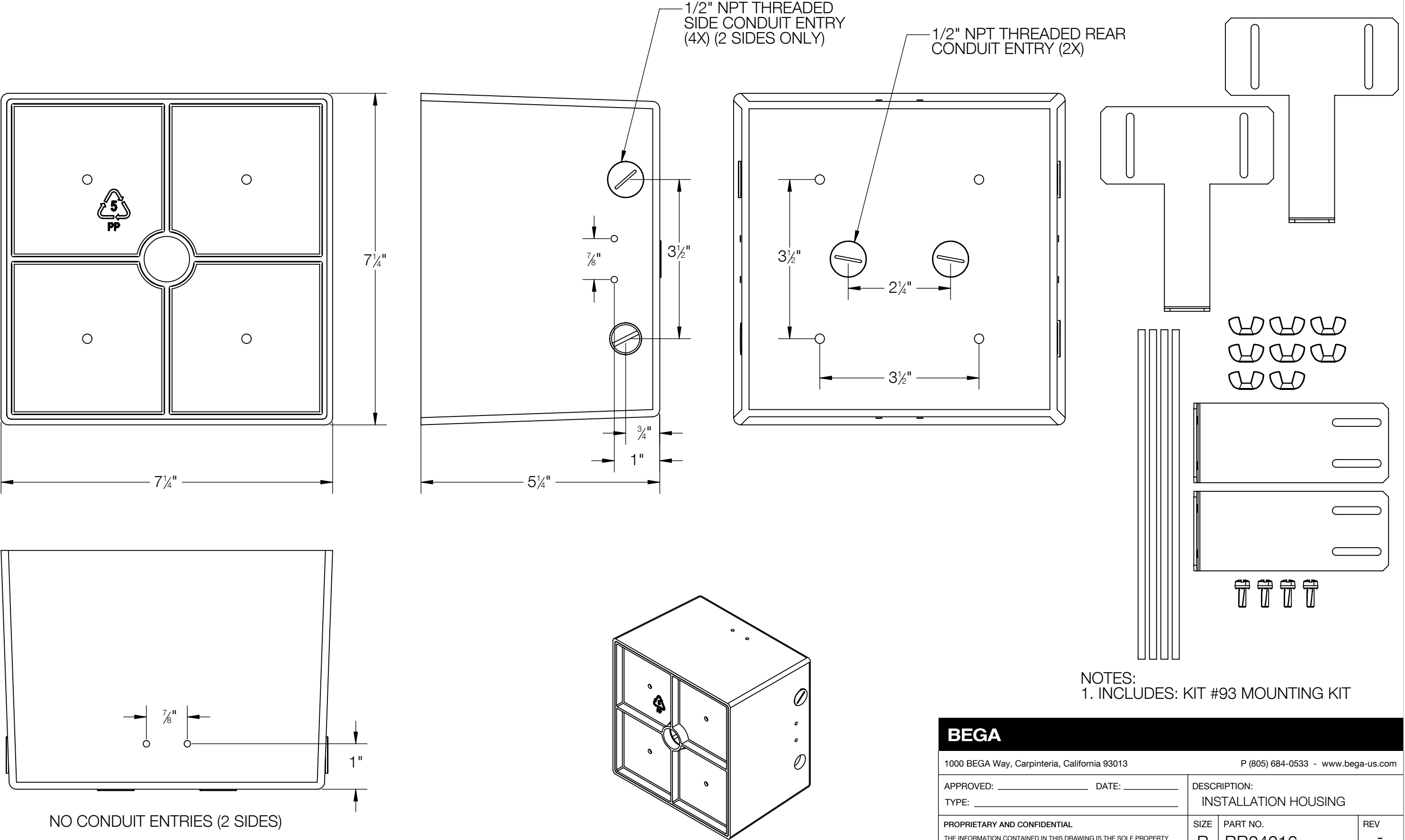
REV	CHANGED BY	DESCRIPTION	DATE



NOTES:  
1. INCLUDES: BB24216 INSTALLATION HOUSING

BEGA				
1000 BEGA Way, Carpinteria, California 93013			P (805) 684-0533 - <a href="http://www.bega-us.com">www.bega-us.com</a>	
APPROVED: _____		DATE: _____		DESCRIPTION:
TYPE: _____				RECESSED WALL LUMINAIRE - DIRECTED LIGHT
PROPRIETARY AND CONFIDENTIAL		SIZE	PART NO.	REV
THE INFORMATION CONTAINED IN THIS DRAWING IS THE SOLE PROPERTY OF BEGA NORTH AMERICA, INC.		B	24207	-
ANY REPRODUCTION IN PART OR AS A WHOLE WITHOUT THE WRITTEN PERMISSION OF BEGA NORTH AMERICA, INC. IS PROHIBITED.		NOT TO SCALE	11/20/2020	SHEET 1 OF 2

REV	CHANGED BY	DESCRIPTION	DATE



NOTES:  
1. INCLUDES: KIT #93 MOUNTING KIT

BEGA			
1000 BEGA Way, Carpinteria, California 93013		P (805) 684-0533 - www.bega-us.com	
APPROVED: _____ DATE: _____		DESCRIPTION: INSTALLATION HOUSING	
TYPE: _____			
PROPRIETARY AND CONFIDENTIAL THE INFORMATION CONTAINED IN THIS DRAWING IS THE SOLE PROPERTY OF BEGA NORTH AMERICA, INC. ANY REPRODUCTION IN PART OR AS A WHOLE WITHOUT THE WRITTEN PERMISSION OF BEGA NORTH AMERICA, INC. IS PROHIBITED.		SIZE B	PART NO. BB24216
		REV -	
NOT TO SCALE		11/18/2020	SHEET 2 OF 2