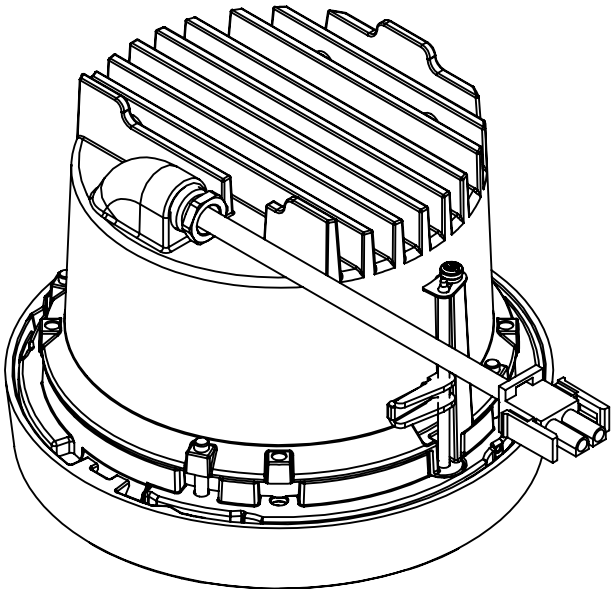


REV	CHANGED BY	DESCRIPTION	DATE



- NOTES:
1. INCLUDES CP24237 - CEILING PAN
 2. INCLUDES KIT #39 - CEILING PAN MOUNTING KIT
 3. FIXTURE REQUIRES A CEILING OPENING OF 5-1/4"
 4. MINIMUM CEILING THICKNESS 1/2"
 5. MAXIMUM CEILING THICKNESS 1-1/4"

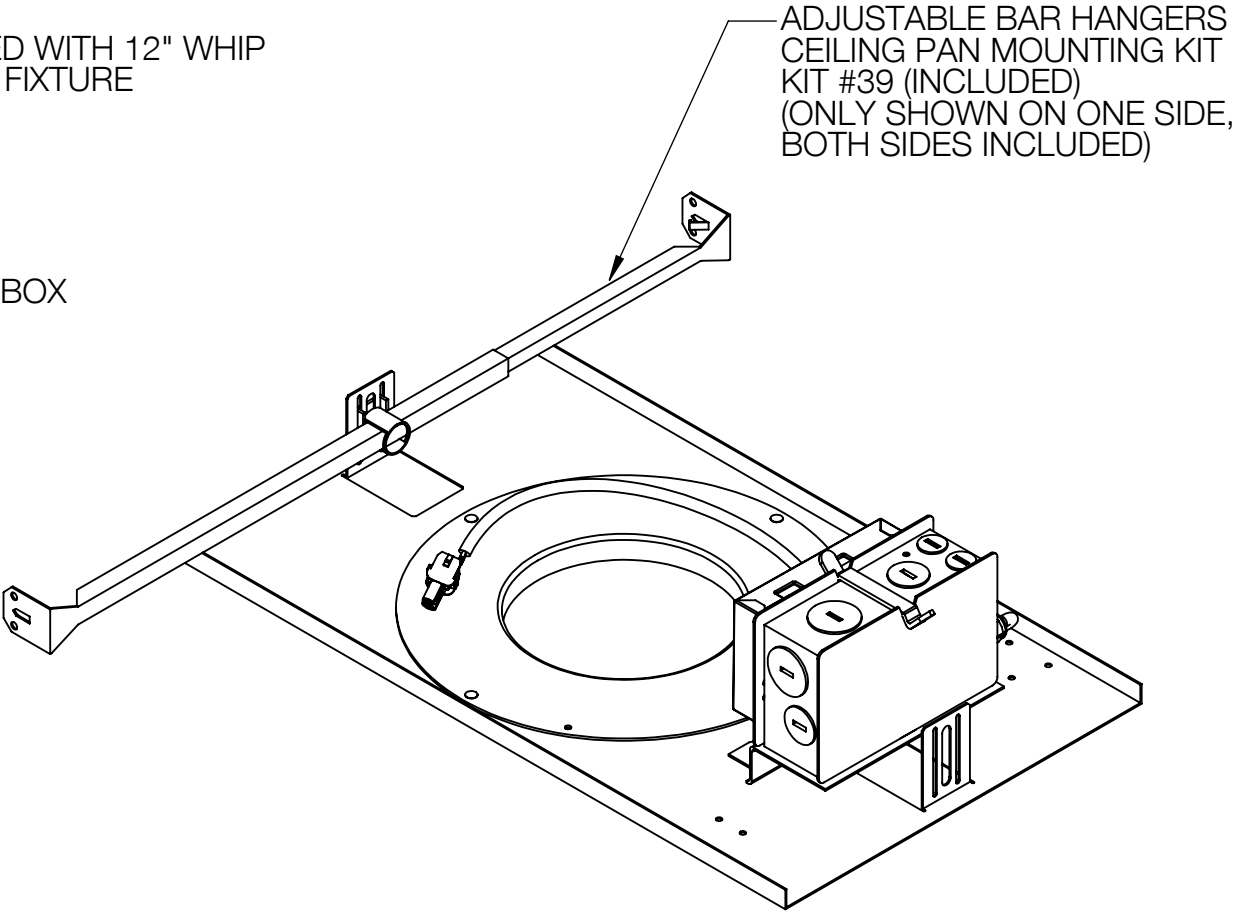
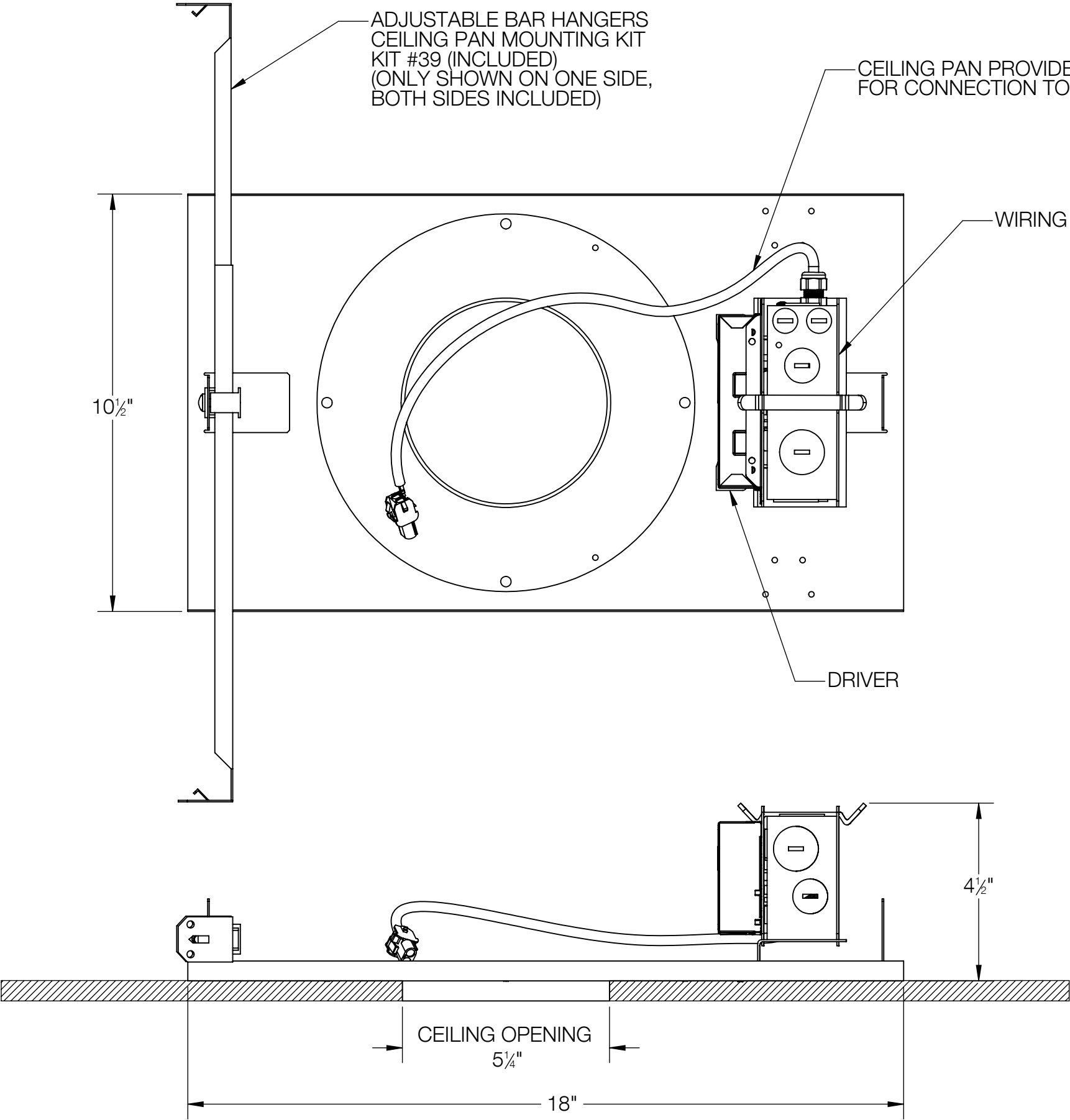
BEGA

1000 BEGA Way, Carpinteria, California 93013 P (805) 684-0533 - www.bega-us.com

APPROVED: _____ DATE: _____ DESCRIPTION:
TYPE: _____ DOWNLIGHT - NARROW BEAM

PROPRIETARY AND CONFIDENTIAL THE INFORMATION CONTAINED IN THIS DRAWING IS THE SOLE PROPERTY OF BEGA NORTH AMERICA, INC. ANY REPRODUCTION IN PART OR AS A WHOLE WITHOUT THE WRITTEN PERMISSION OF BEGA NORTH AMERICA, INC. IS PROHIBITED.	SIZE	PART NO.	REV
	B	24237	-
NOT TO SCALE		8/8/2023	SHEET 1 OF 2

REV	CHANGED BY	DESCRIPTION	DATE



- NOTES:
1. INCLUDES KIT #39 - CEILING PAN MOUNTING KIT
 2. HANGER BRACKETS ADJUSTABLE BETWEEN 16" AND 24"
 3. FIXTURE REQUIRES A CEILING OPENING OF 5-1/4"
 4. MINIMUM CEILING THICKNESS 1/2"
 5. MAXIMUM CEILING THICKNESS 1-1/4"

BEGA				
1000 BEGA Way, Carpinteria, California 93013			P (805) 684-0533 - www.bega-us.com	
APPROVED: _____		DATE: _____		DESCRIPTION: CEILING PAN
TYPE: _____				
PROPRIETARY AND CONFIDENTIAL		SIZE	PART NO.	REV
THE INFORMATION CONTAINED IN THIS DRAWING IS THE SOLE PROPERTY OF BEGA NORTH AMERICA, INC. ANY REPRODUCTION IN PART OR AS A WHOLE WITHOUT THE WRITTEN PERMISSION OF BEGA NORTH AMERICA, INC. IS PROHIBITED.		B	CP24237	-
		NOT TO SCALE	8/8/2023	SHEET 2 OF 2