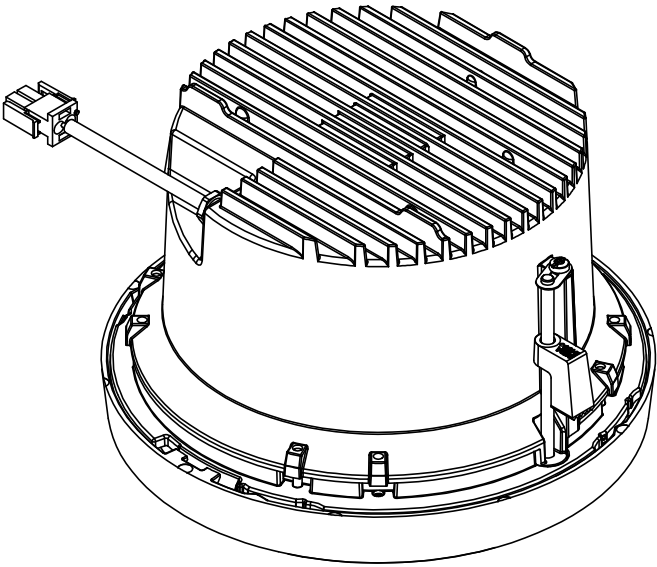
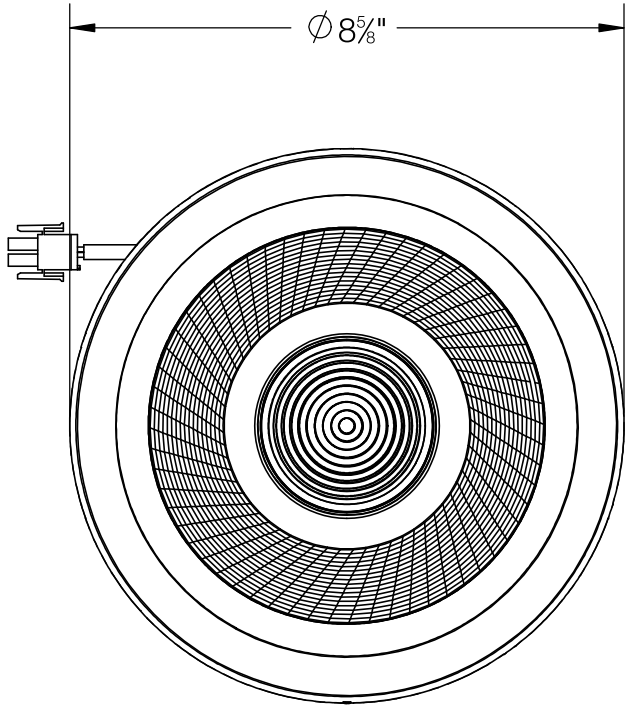
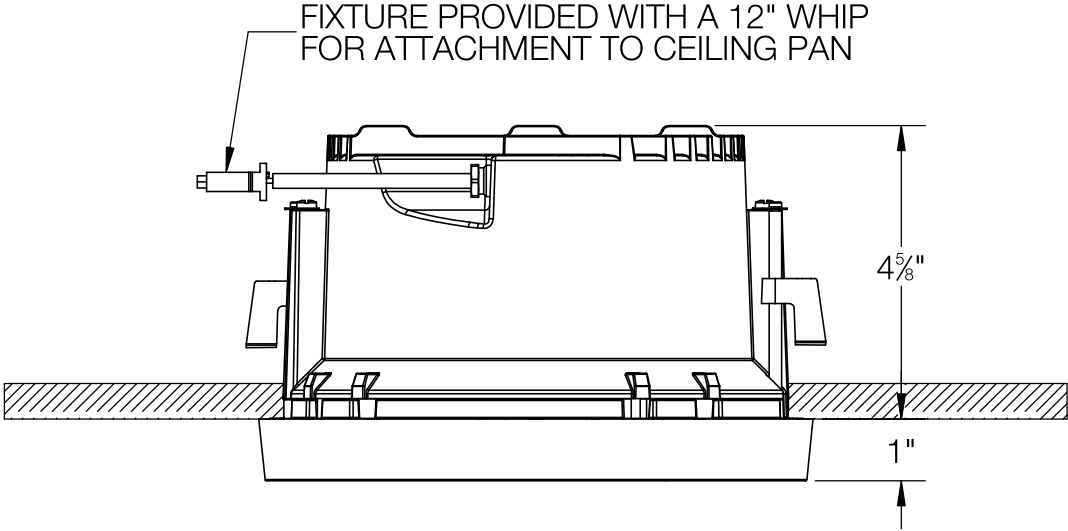


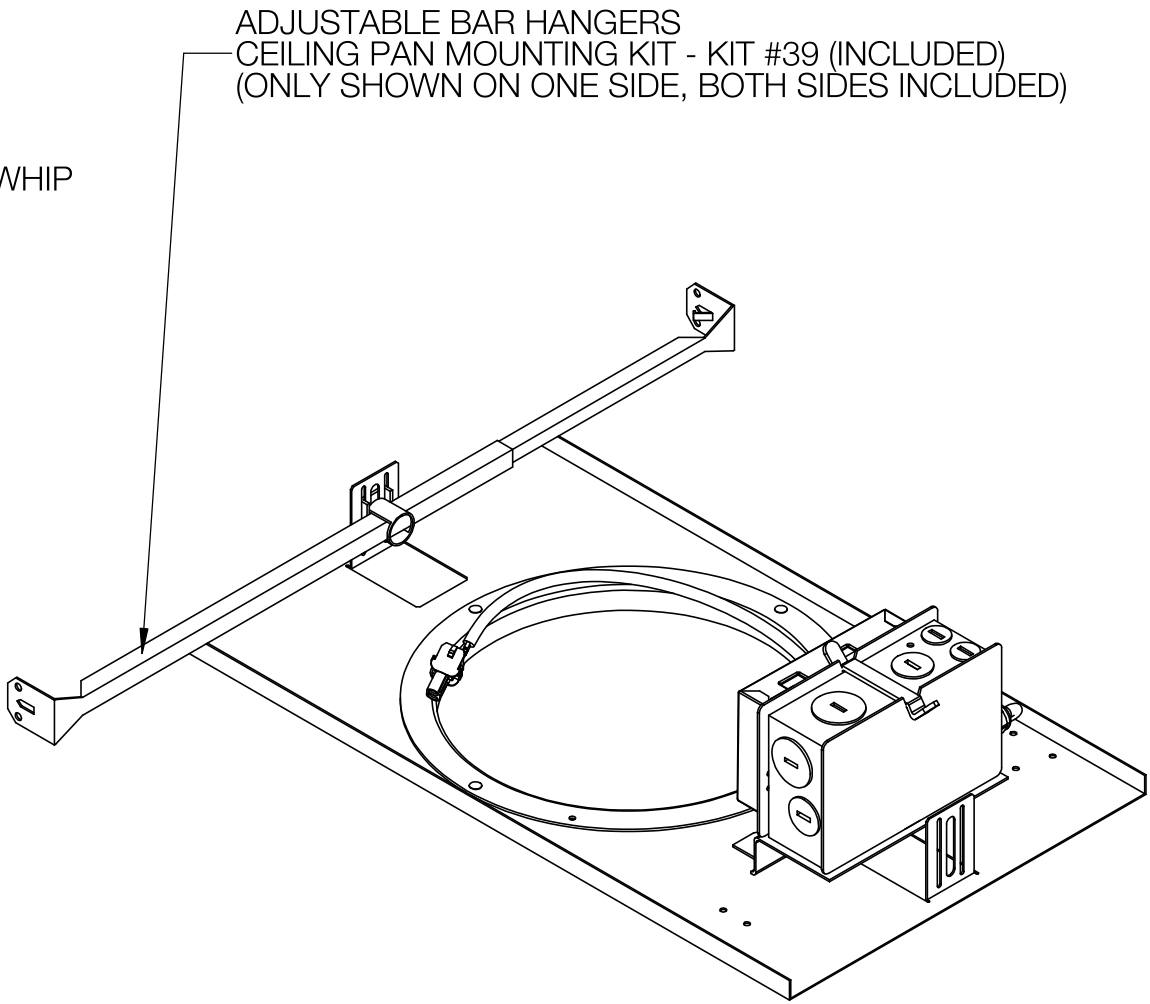
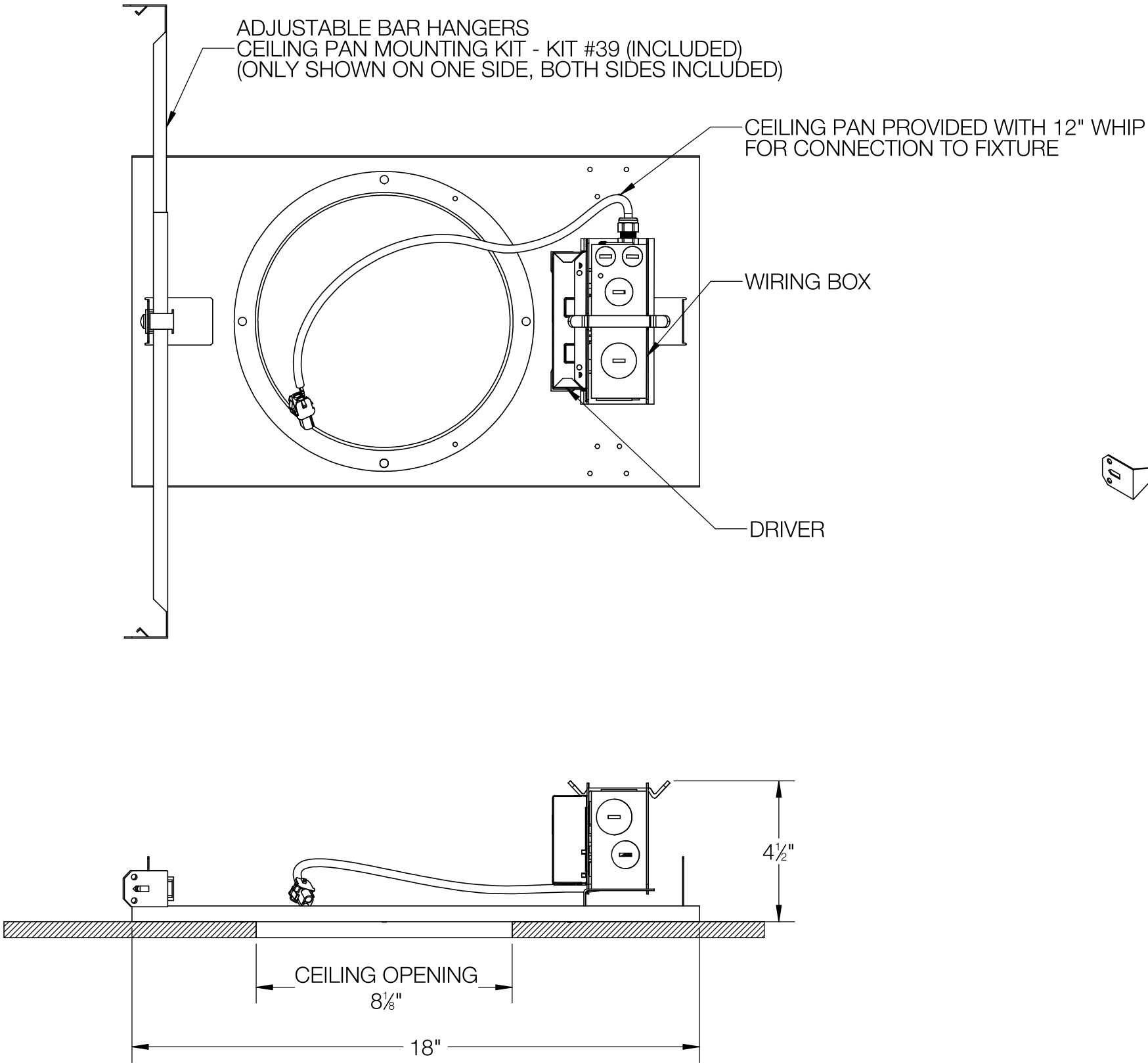
| REV | CHANGED BY | DESCRIPTION | DATE |
|-----|------------|-------------|------|
| | | | |



- NOTES:
1. INCLUDES CP24241 - CEILING PAN
 2. INCLUDES KIT #39 - CEILING PAN MOUNTING KIT
 3. FIXTURE REQUIRES A CEILING OPENING OF 8-1/8"
 4. MINIMUM CEILING THICKNESS: 1/2"
 5. MAXIMUM CEILING THICKNESS: 1-2/3"

| BEGA | | | | |
|--|--|--|------------------------------------|--------------|
| 1000 BEGA Way, Carpinteria, California 93013 | | | P (805) 684-0533 - www.bega-us.com | |
| APPROVED: _____ DATE: _____ | | DESCRIPTION: DOWNLIGHT · VERY WIDE BEAM | | |
| TYPE: _____ | | | | |
| PROPRIETARY AND CONFIDENTIAL THE INFORMATION CONTAINED IN THIS DRAWING IS THE SOLE PROPERTY OF BEGA NORTH AMERICA, INC. ANY REPRODUCTION IN PART OR AS A WHOLE WITHOUT THE WRITTEN PERMISSION OF BEGA NORTH AMERICA, INC. IS PROHIBITED. | | SIZE B | PART NO. 24257 | REV - |
| | | NOT TO SCALE | 9/11/2023 | SHEET 1 OF 2 |

| REV | CHANGED BY | DESCRIPTION | DATE |
|-----|------------|-------------|------|
| | | | |



- NOTES:
1. INCLUDES KIT #39 - CEILING PAN MOUNTING KIT
 2. HANGER BRACKETS ADJUSTABLE BETWEEN 16" AND 24"
 3. FIXTURE REQUIRES A CEILING OPENING OF 8-1/8"
 4. MINIMUM CEILING THICKNESS: 1/2"
 5. MAXIMUM CEILING THICKNESS: 1-2/3"

| BEGA | | | | |
|--|--|---------------------------------|------------------------------------|--------------|
| 1000 BEGA Way, Carpinteria, California 93013 | | | P (805) 684-0533 - www.bega-us.com | |
| APPROVED: _____ DATE: _____ | | DESCRIPTION: CEILING PAN | | |
| TYPE: _____ | | | | |
| PROPRIETARY AND CONFIDENTIAL THE INFORMATION CONTAINED IN THIS DRAWING IS THE SOLE PROPERTY OF BEGA NORTH AMERICA, INC. ANY REPRODUCTION IN PART OR AS A WHOLE WITHOUT THE WRITTEN PERMISSION OF BEGA NORTH AMERICA, INC. IS PROHIBITED. | | SIZE | PART NO. | REV |
| | | B | CP24241 | - |
| | | NOT TO SCALE | 9/11/2023 | SHEET 2 OF 2 |