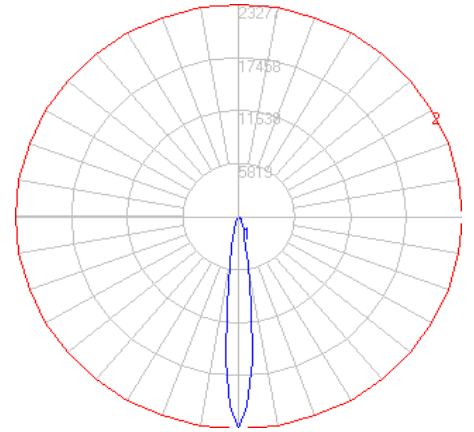
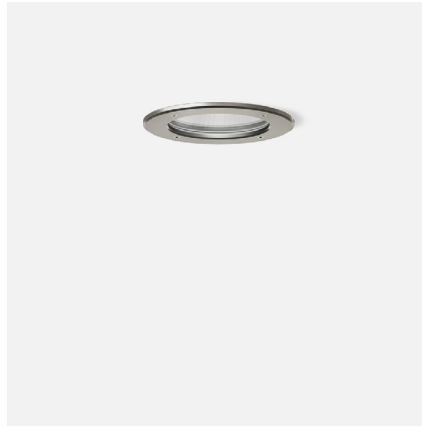


BEGA

File: 24279K4_BEGA_IES.ies

TEST: BE_24279K4
 TEST LAB: BEGA
 DATE: 6/14/2019
 LUMINAIRE: 24 279K4
 LAMP: 24.1W LED

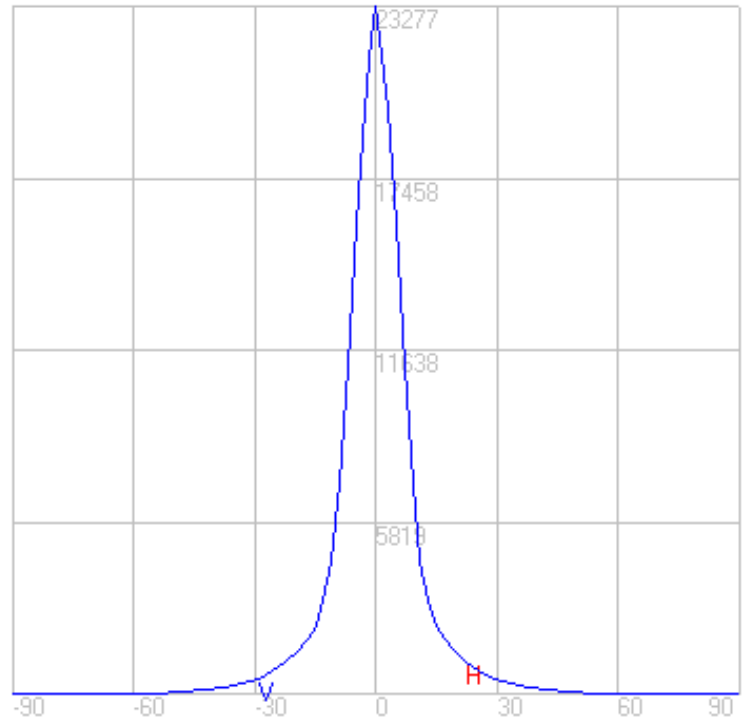
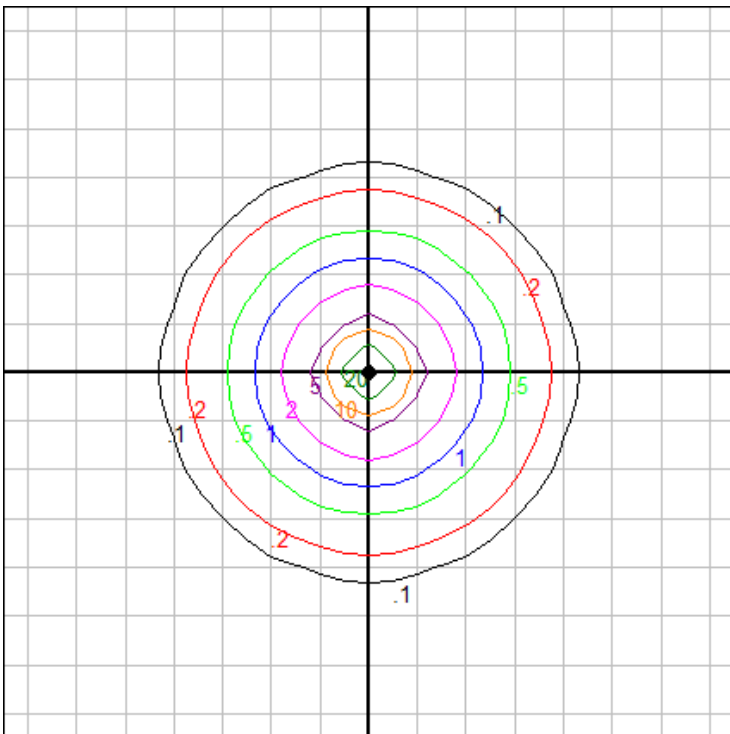


Characteristics

NEMA Type	3 H x 3 V
Maximum Candela	23276.947
Maximum Candela Angle	0 H 0 V
Horizontal Beam Angle (50%)	13.5
Vertical Beam Angle (50%)	13.5
Horizontal Field Angle (10%)	30.0
Vertical Field Angle (10%)	30.0
Lumens Per Lamp	N.A. (absolute)
Total Lamp Lumens	N.A. (absolute)
Beam Lumens	729
Beam Efficiency	N.A.
Field Lumens	1559
Field Efficiency	N.A.
Spill Lumens	950
Luminaire Lumens	2509
Total Efficiency	N.A.
Total Luminaire Watts	28
Ballast Factor	1.00

Zonal Lumen Summary

Zone	Lumens
0-10	1162.93
10-20	709.54
20-30	385.51
30-40	182.31
40-50	69.09
50-60	10.61
60-70	0.35
70-80	0.24
80-90	0.09
90-100	0.00
100-110	0.00
110-120	0.00
120-130	0.00
130-140	0.00
140-150	0.00
150-160	0.00
160-170	0.00
170-180	0.00



Mounting Height: 25 ft.

Grid Spacing: 5 ft.

In the interest of product improvement, BEGA reserves the right to make technical changes without notice.

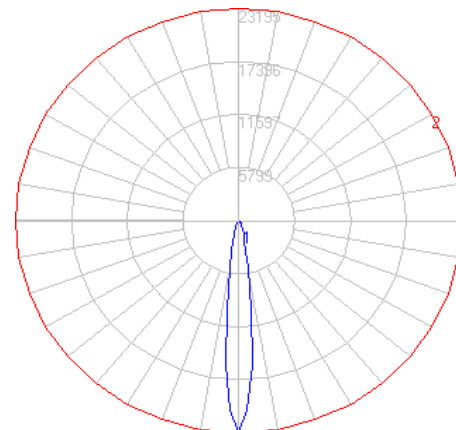
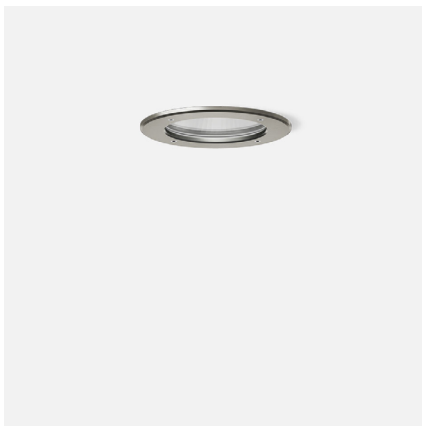
BEGA 1000 Bega Way, Carpinteria, CA 93013 (805)684-0533 Fax (805)566-9474 www.bega-us.com © Copyright BEGA-US 2023

9/27/2023

BEGA

File: 24279K35_BEGA_IES.ies

TEST: BE_24279K4
 TEST LAB: BEGA
 DATE: 6/14/2019
 LUMINAIRE: 24 279K35
 LAMP: 24.1W LED

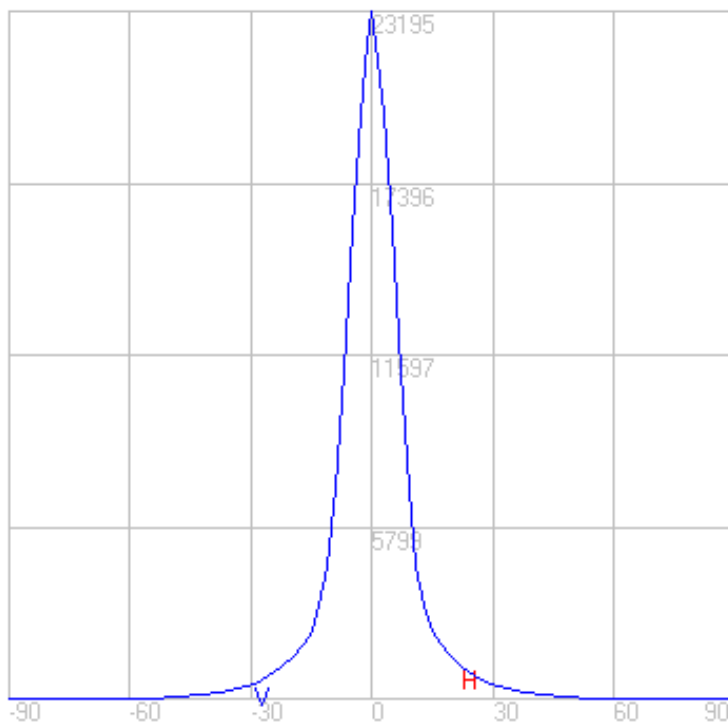
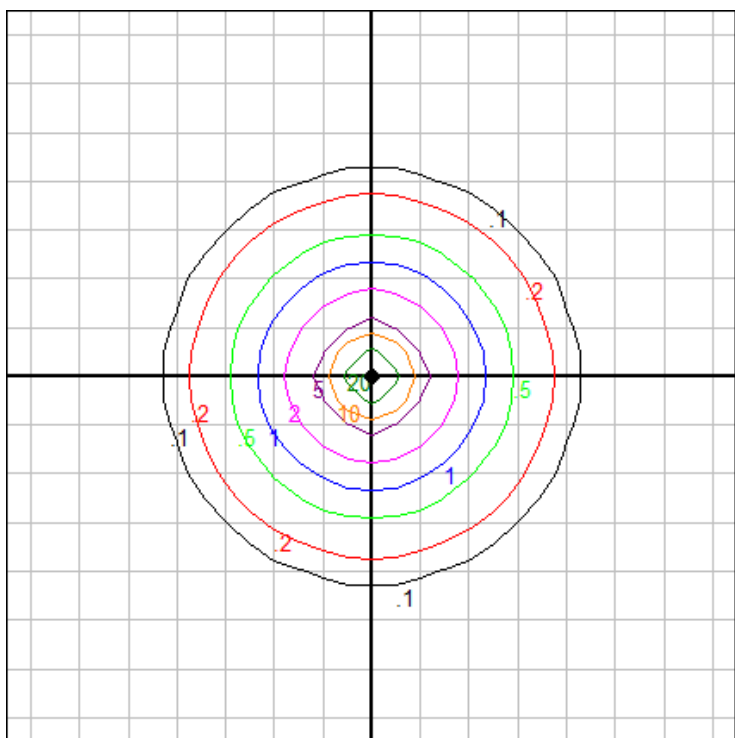


Characteristics

NEMA Type	3 H x 3 V
Maximum Candela	23194.698
Maximum Candela Angle	0 H 0 V
Horizontal Beam Angle (50%)	13.5
Vertical Beam Angle (50%)	13.5
Horizontal Field Angle (10%)	30.0
Vertical Field Angle (10%)	30.0
Lumens Per Lamp	N.A. (absolute)
Total Lamp Lumens	N.A. (absolute)
Beam Lumens	726
Beam Efficiency	N.A.
Field Lumens	1553
Field Efficiency	N.A.
Spill Lumens	947
Luminaire Lumens	2500
Total Efficiency	N.A.
Total Luminaire Watts	28
Ballast Factor	1.00

Zonal Lumen Summary

Zone	Lumens
0-10	1158.82
10-20	707.03
20-30	384.15
30-40	181.67
40-50	68.85
50-60	10.57
60-70	0.34
70-80	0.24
80-90	0.09
90-100	0.00
100-110	0.00
110-120	0.00
120-130	0.00
130-140	0.00
140-150	0.00
150-160	0.00
160-170	0.00
170-180	0.00



Mounting Height: 25 ft.

Grid Spacing: 5 ft.

In the interest of product improvement, BEGA reserves the right to make technical changes without notice.

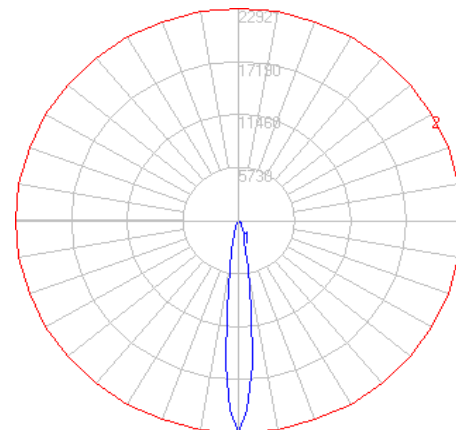
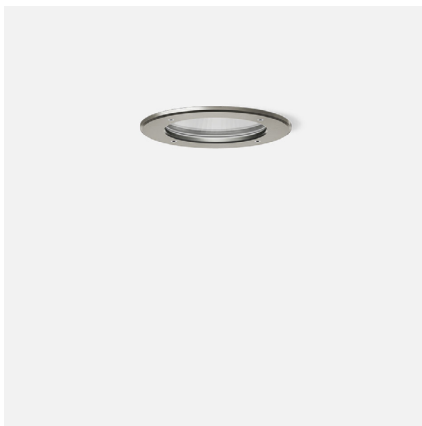
BEGA 1000 Bega Way, Carpinteria, CA 93013 (805)684-0533 Fax (805)566-9474 www.bega-us.com © Copyright BEGA-US 2023

9/27/2023

BEGA

File: 24279K3_BEGA_IES.ies

TEST: BE_24279K4
 TEST LAB: BEGA
 DATE: 6/14/2019
 LUMINAIRE: 24 279K3
 LAMP: 24.1W LED

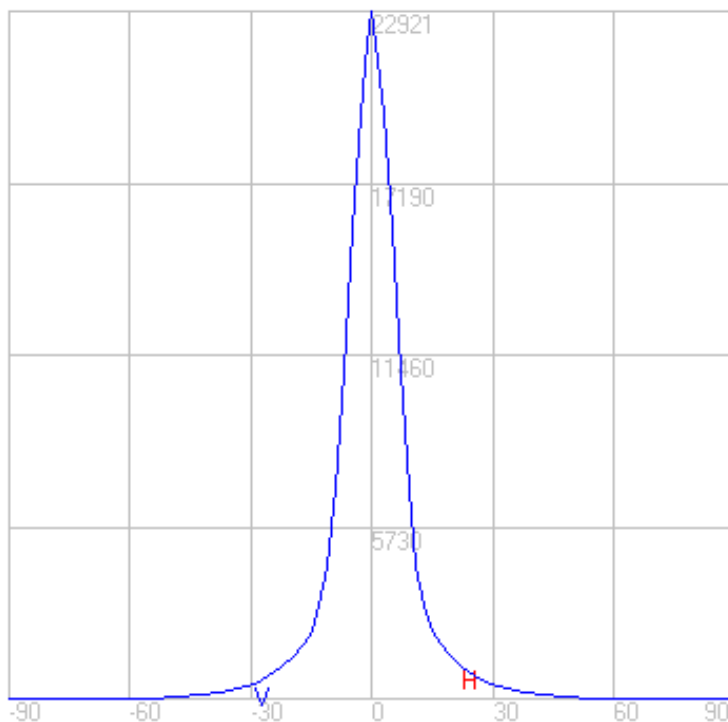
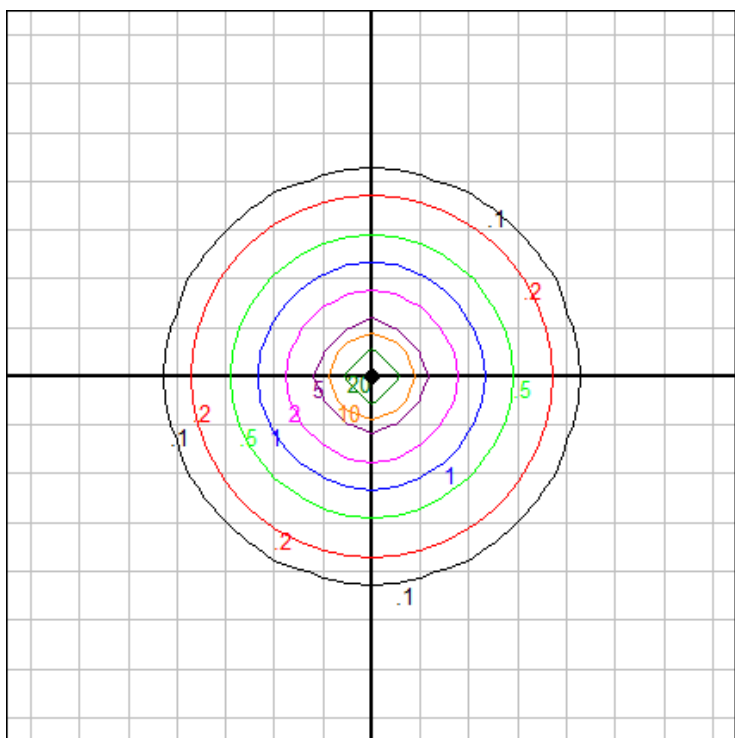


Characteristics

NEMA Type	3 H x 3 V
Maximum Candela	22920.529
Maximum Candela Angle	0 H 0 V
Horizontal Beam Angle (50%)	13.5
Vertical Beam Angle (50%)	13.5
Horizontal Field Angle (10%)	30.0
Vertical Field Angle (10%)	30.0
Lumens Per Lamp	N.A. (absolute)
Total Lamp Lumens	N.A. (absolute)
Beam Lumens	718
Beam Efficiency	N.A.
Field Lumens	1535
Field Efficiency	N.A.
Spill Lumens	936
Luminaire Lumens	2471
Total Efficiency	N.A.
Total Luminaire Watts	28
Ballast Factor	1.00

Zonal Lumen Summary

Zone	Lumens
0-10	1145.13
10-20	698.68
20-30	379.61
30-40	179.52
40-50	68.04
50-60	10.45
60-70	0.34
70-80	0.23
80-90	0.09
90-100	0.00
100-110	0.00
110-120	0.00
120-130	0.00
130-140	0.00
140-150	0.00
150-160	0.00
160-170	0.00
170-180	0.00



Mounting Height: 25 ft.

Grid Spacing: 5 ft.

In the interest of product improvement, BEGA reserves the right to make technical changes without notice.

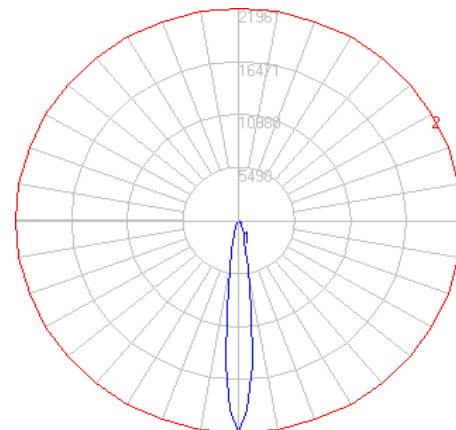
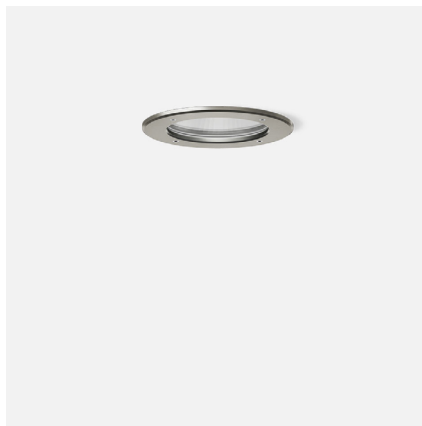
BEGA 1000 Bega Way, Carpinteria, CA 93013 (805)684-0533 Fax (805)566-9474 www.bega-us.com © Copyright BEGA-US 2023

9/27/2023

BEGA

File: 24279K27_BEGA_IES.ies

TEST: BE_24279K4
 TEST LAB: BEGA
 DATE: 6/14/2019
 LUMINAIRE: 24 279K27
 LAMP: 24.1W LED

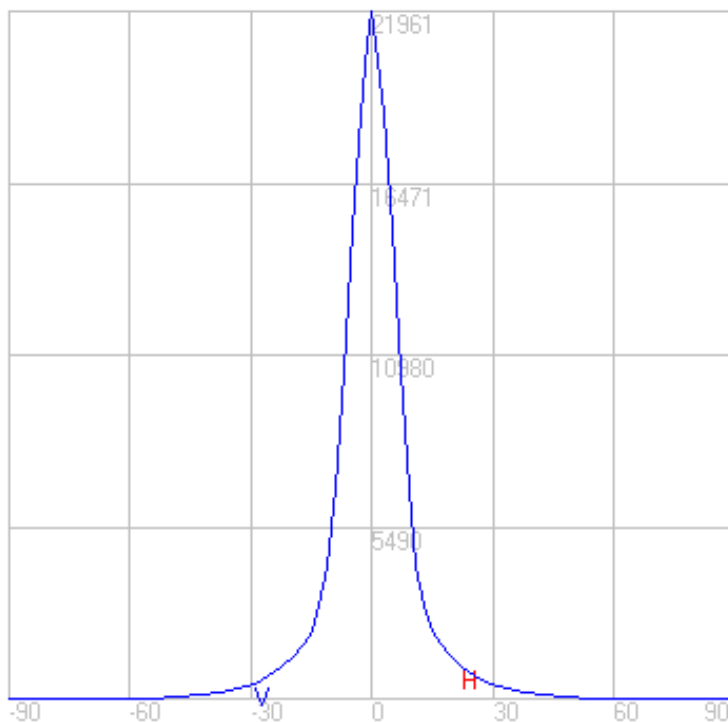
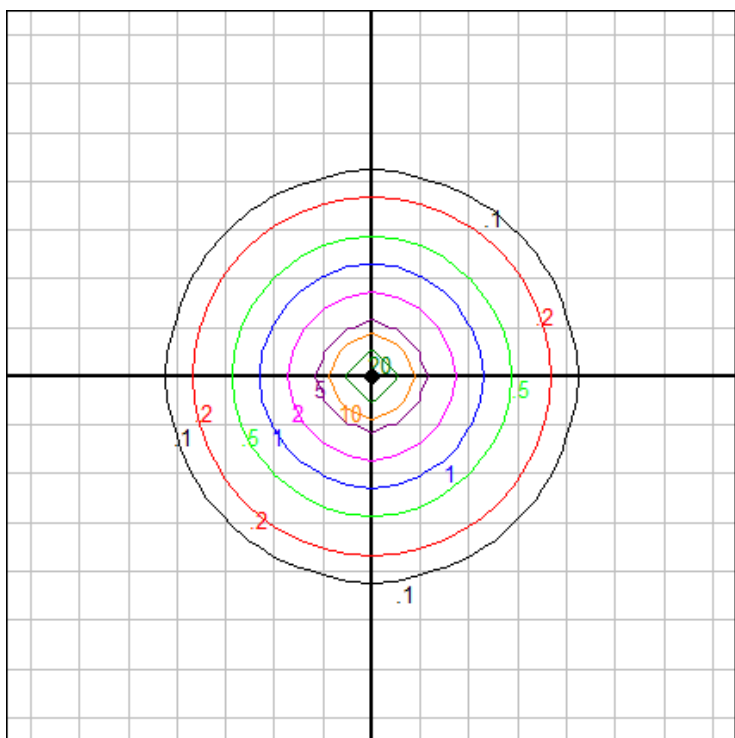


Characteristics

NEMA Type	3 H x 3 V
Maximum Candela	21960.937
Maximum Candela Angle	0 H 0 V
Horizontal Beam Angle (50%)	13.5
Vertical Beam Angle (50%)	13.5
Horizontal Field Angle (10%)	30.0
Vertical Field Angle (10%)	30.0
Lumens Per Lamp	N.A. (absolute)
Total Lamp Lumens	N.A. (absolute)
Beam Lumens	688
Beam Efficiency	N.A.
Field Lumens	1470
Field Efficiency	N.A.
Spill Lumens	897
Luminaire Lumens	2367
Total Efficiency	N.A.
Total Luminaire Watts	28
Ballast Factor	1.00

Zonal Lumen Summary

Zone	Lumens
0-10	1097.18
10-20	669.43
20-30	363.72
30-40	172.01
40-50	65.19
50-60	10.01
60-70	0.33
70-80	0.22
80-90	0.09
90-100	0.00
100-110	0.00
110-120	0.00
120-130	0.00
130-140	0.00
140-150	0.00
150-160	0.00
160-170	0.00
170-180	0.00



Mounting Height: 25 ft.

Grid Spacing: 5 ft.

In the interest of product improvement, BEGA reserves the right to make technical changes without notice.

BEGA 1000 Bega Way, Carpinteria, CA 93013 (805)684-0533 Fax (805)566-9474 www.bega-us.com © Copyright BEGA-US 2023

9/27/2023