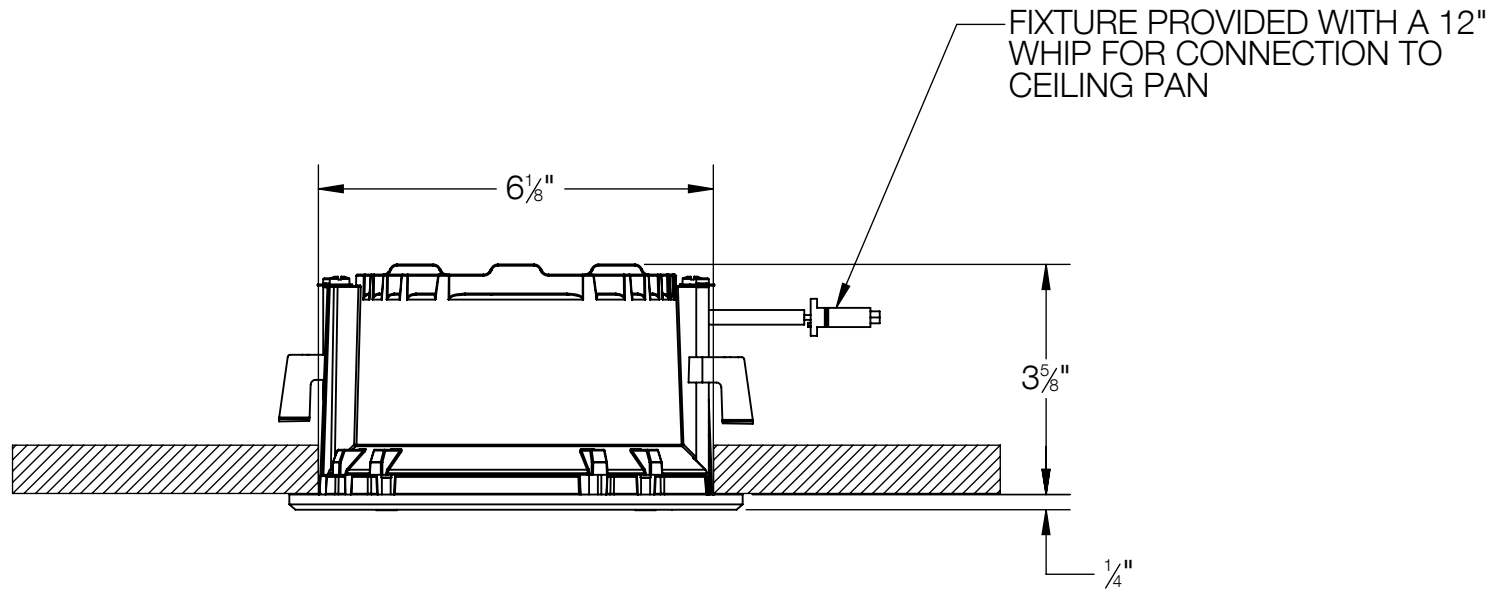
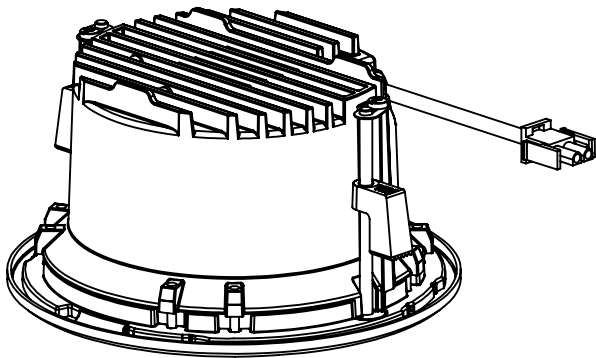
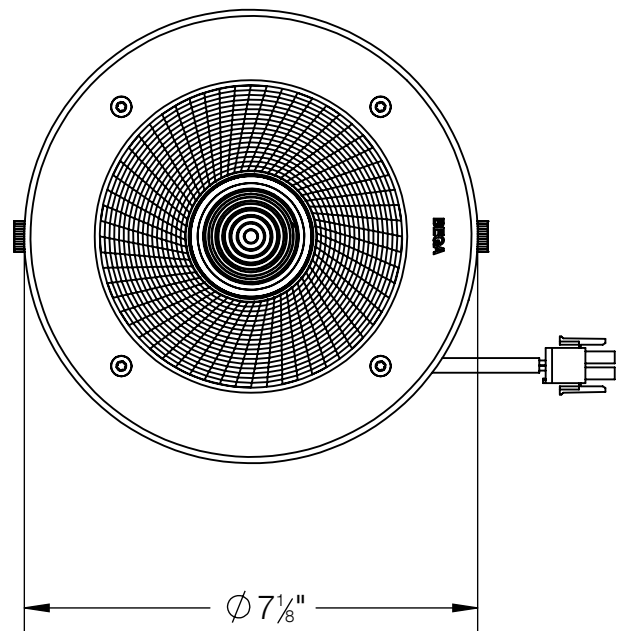


REV	CHANGED BY	DESCRIPTION	DATE

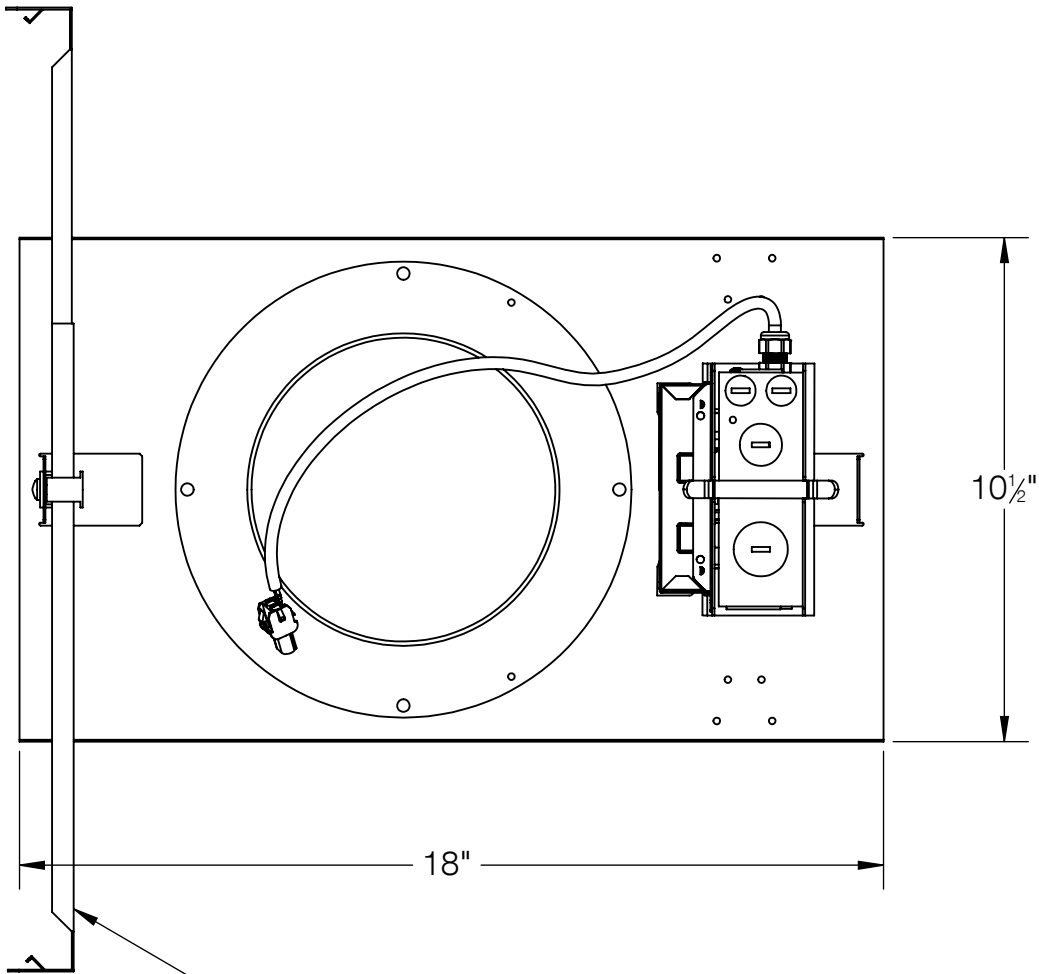


- NOTES:
1. INCLUDES CP24239 - CEILING PAN
 2. INCLUDES KIT #39 CEILING PAN MOUNTING KIT
 3. FIXTURES REQUIRES A CEILING OPENING OF 6-1/2"
 4. MINIMUM CEILING THICKNESS 1/2"
 5. MAXIMUM CEILING THICKNESS 1-5/8"

BEGA

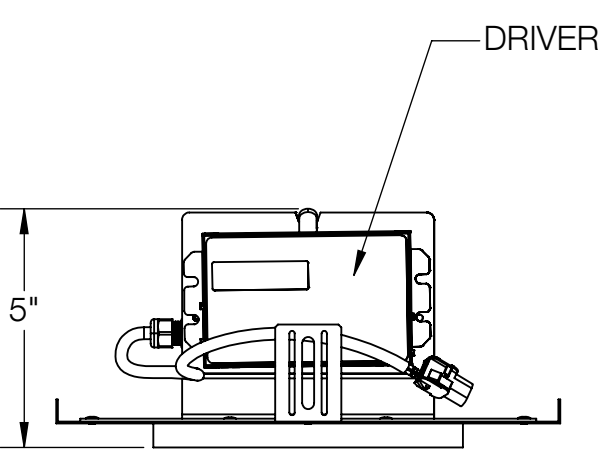
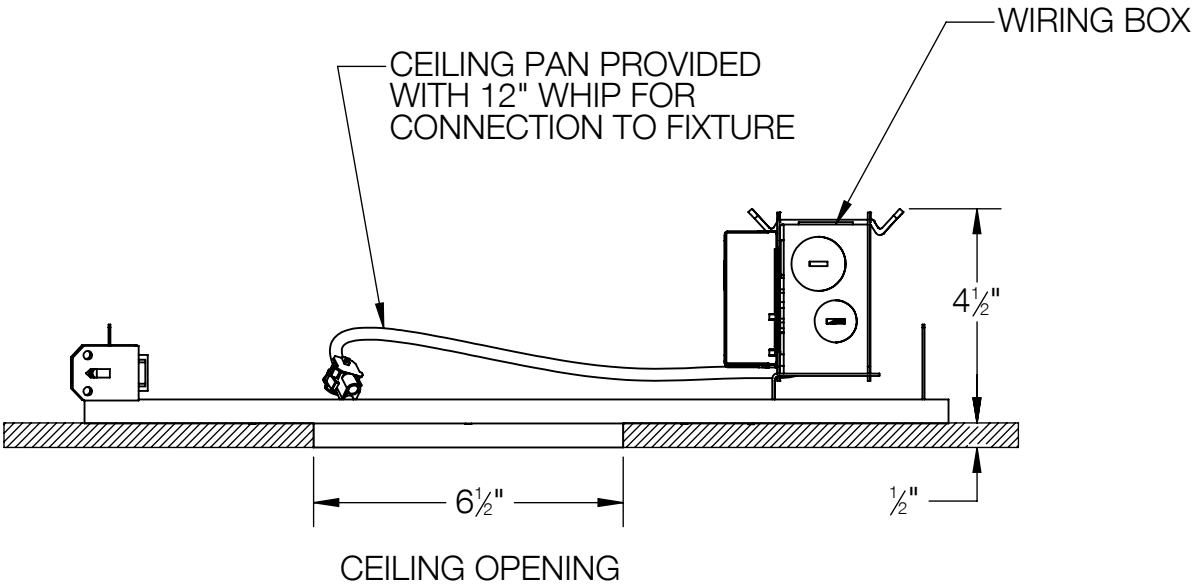
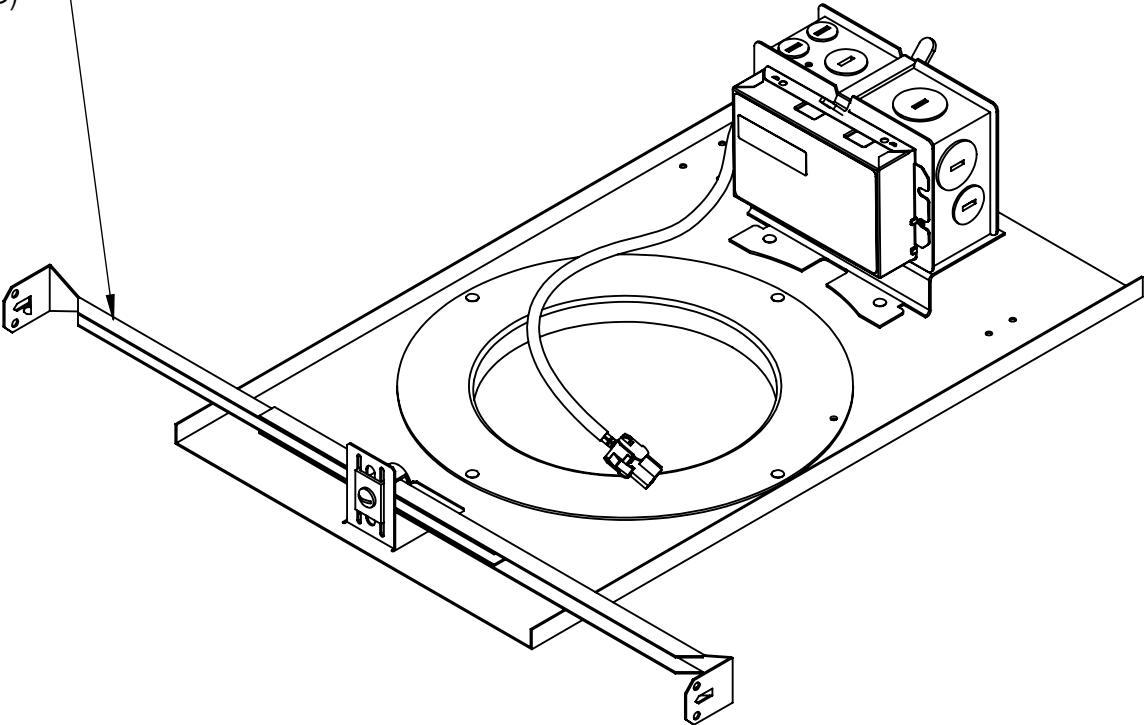
1000 BEGA Way, Carpinteria, California 93013		P (805) 684-0533 - www.bega-us.com	
APPROVED: _____ DATE: _____		DESCRIPTION: DOWNLIGHT - NARROW BEAM	
TYPE: _____			
PROPRIETARY AND CONFIDENTIAL THE INFORMATION CONTAINED IN THIS DRAWING IS THE SOLE PROPERTY OF BEGA NORTH AMERICA, INC. ANY REPRODUCTION IN PART OR AS A WHOLE WITHOUT THE WRITTEN PERMISSION OF BEGA NORTH AMERICA, INC. IS PROHIBITED.		SIZE B	PART NO. 24 279
		REV -	
NOT TO SCALE		9/27/2023	SHEET 1 OF 2

REV	CHANGED BY	DESCRIPTION	DATE



ADJUSATBLE BAR HANGERS
CEILING PAN MOUNTING KIT #39
(ONLY SHOWING ONE SIDE,
BOTH HANGERS INCLUDED)

ADJUSATBLE BAR HANGERS
CEILING PAN MOUNTING KIT #39
(ONLY SHOWING ONE SIDE,
BOTH HANGERS INCLUDED)



- NOTES:
1. INCLUDES KIT #39 - CEILING PAN MOUNTING KIT
 2. HANGER BRACKETS ADJUSTABLE BETWEEN 16" AND 24"
 3. FIXTURE REQUIRES A CEILING OPENING OF 6-1/2"
 4. MINIMUM CEILING THICKNESS: 1/2"
 5. MAXIMUM CEILING THICKNESS: 1-5/8"

BEGA

1000 BEGA Way, Carpinteria, California 93013		P (805) 684-0533 - www.bega-us.com	
APPROVED: _____ DATE: _____		DESCRIPTION: CEILING PAN	
TYPE: _____			
PROPRIETARY AND CONFIDENTIAL THE INFORMATION CONTAINED IN THIS DRAWING IS THE SOLE PROPERTY OF BEGA NORTH AMERICA, INC. ANY REPRODUCTION IN PART OR AS A WHOLE WITHOUT THE WRITTEN PERMISSION OF BEGA NORTH AMERICA, INC. IS PROHIBITED.		SIZE B	PART NO. CP24239
		NOT TO SCALE	9/27/2023
			SHEET 2 OF 2