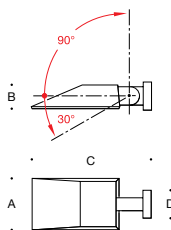


**Tools Required:**

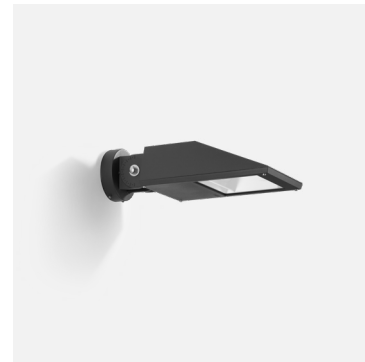
- 3mm hex screwdriver
- Phillips medium screwdriver
- Adjustable wrench

**Overview:**

LED Watts: 21.3W  
 System Watts: 26.0W  
 Controllability: 0-10V dimmable  
 Weight: 11.0 lbs.  
 Protection Class: IP65


**Dimensions**

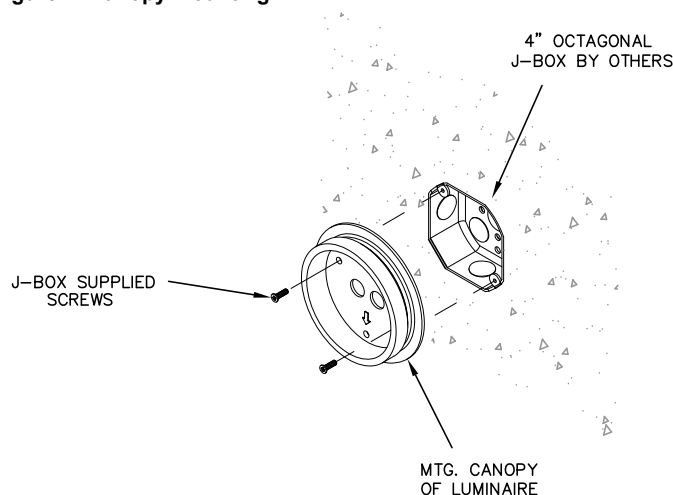
**A:** 8 7/8"  
**B:** 4"  
**C:** 19 1/8"  
**D:** 5 1/4"


**Notice to Installer:**

1. See page 2 for product safety warnings.
2. BEGA luminaires may be damaged if connected to conduit systems containing water - Article 300-5G of National Electric Code requires that "Conduits or raceways through which moisture may contact energized live parts shall be sealed or plugged at either or both ends".
3. In conformance with U.L. Standards 1598, a silicone-based sealant **MUST** be used between the mounting plate edge and supporting wall.
4. Luminaire mounts directly to recessed 4" octagonal junction box (by others).
5. It is the installing contractor's responsibility to ensure that the junction box is adequately supported and the maximum load requirements are adhered to per code requirements.
6. Suitable for up light or down light mounting orientations.

**Installation: Luminaire**

1. Loosen (2) 3mm hex head screws to remove the mounting canopy base casting.  
NOTE: DO NOT REMOVE SAFETY TETHER BETWEEN LUMINAIRE AND CANOPY BASE CASTING.
2. Route luminaire wires through canopy base casting and into 4" octagonal junction box.
3. Make supply wiring and luminaire wiring connections inside the wiring box:  
MAIN VOLTAGE SUPPLY WIRE TO BLACK LUMINAIRE WIRE  
NEUTRAL (COMMON) SUPPLY WIRE TO WHITE LUMINAIRE WIRE  
GREEN GROUND WIRE TO GREEN LUMINAIRE WIRE  
0-10V dimming (if applicable):  
DIMMING CONTROL WIRE (+) TO PURPLE LUMINAIRE WIRE  
DIMMING CONTROL WIRE (-) TO GREY LUMINAIRE WIRE
4. Place a small bead of silicone around the back side of the luminaire canopy base casting and mount luminaire canopy base casting to the 4" octagonal junction box using hardware by others (minimum size 8-32).
5. Place luminaire over the canopy base casting and tighten the (2) 3mm hex head screws to secure.
6. To adjust the tilt angle of the luminaire, loosen hex nut at the fixture arm joint and adjust luminaire to desired angle. Re-tighten the hex nut to secure luminaire in place.

**Figure 1: Canopy mounting**

**Accessories**

Please refer to the appropriate accessory installation sheet for further instruction when applicable.

**Maintenance:**

Clean regularly with solvent-free cleaner removing dirt and debris. Do not use high pressure cleaners.

**Replacement Parts**

See label inside of fixture for LED replacement part number.

Consult factory for all other replacement components.

**Product Safety Warnings:**

**THIS PRODUCT MUST BE INSTALLED IN ACCORDANCE WITH THE APPLICABLE INSTALLATION CODE BY A PERSON FAMILIAR WITH THE CONSTRUCTION AND OPERATION OF THE PRODUCT AND THE HAZARDS INVOLVED. SUITABLE FOR WET LOCATIONS. MIN 90°C SUPPLY CONDUCTORS.**

**CE PRODUIT DOIT ÊTRE INSTALLÉ SELON LE CODE D'INSTALLATION PERTINENT, PAR UNE PERSONNE QUI CONNAÎT BIEN LE PRODUIT ET SON FONCTIONNEMENT AINSI QUE LES RISQUES INHÉRENTS. CONVIENT AUX EMPLACEMENTS MOUILLÉS.**

**LES FILS D'ALIMENTATION 90°C MIN.**