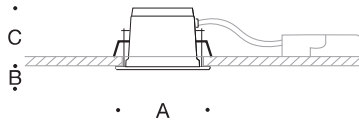


**Tools Required:**

- 3mm hex head screwdriver
- Phillips head screwdriver
- 1.5mm hex head screwdriver
- T10 torx head screwdriver

**Overview:**

LED Watts: 12.3W  
 System Watts: 14.0W  
 Controllability: 0-10V dimmable  
 Weight: 1.8 lbs.  
 Protection Class: IP65



**Dimensions**

A: 4-3/8"  
 B: 1/4"  
 C: 2-3/4"



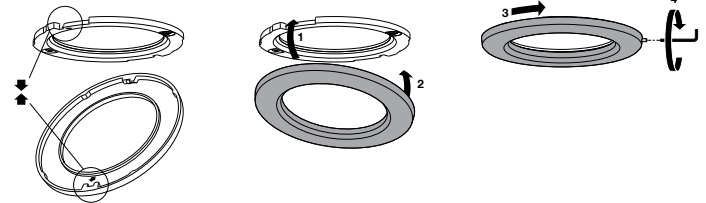
**Notice to Installer:**

1. See page 2 for specific product safety warnings.
2. Luminaire is non-IC rated. Insulation must be at least 3" from luminaire.
3. Luminaire is not suitable for poured concrete construction.
4. Ceiling box with integral driver, part CEILINGBOX-L-09, included. 24" whip provided to connect fixture to ceiling box via quick disconnect.
5. Required ceiling cutout is 3-7/8".
6. Minimum ceiling thickness is 3/8". If thinner material is being used, the back of the ceiling cladding must be reinforced where the mounting claws from the fixture will connect with the ceiling material.
7. Maximum ceiling thickness is 1-3/4"
8. **WARNING: If ceiling is not accessible from above, 8" plenum clearance required to fit box through ceiling cutout.**

**Installation: Luminaire**

1. Unscrew (2) 3mm hex head screws to open ceiling box.
2. Bring supply wires to ceiling box through strain relief bushing OR connect conduit directly to ceiling box and make connections to driver wires:  
 SUPPLY WIRING CONNECTIONS:  
 MAIN VOLTAGE SUPPLY WIRE TO BLACK DRIVER WIRE  
 NEUTRAL (COMMON) SUPPLY WIRE TO WHITE DRIVER WIRE  
 GREEN (GROUND) WIRE TO GREEN DRIVER WIRE  
 0-10V DIMMING (IF APPLICABLE)  
 DIM CONTROL (+) TO POSITIVE DRIVER DIM CONTROL WIRE  
 DIM CONTROL (-) TO NEGATIVE DRIVER DIM CONTROL WIRE
3. Tighten (2) Phillips-head screws on the strain relief bushing for the supply wiring if applicable. Close the ceiling box and tighten the (2) 3mm hex head screws to secure.
4. Connect the fixture to the ceiling box via the quick disconnect.
5. Push ceiling box through ceiling cutout opening into plenum. The ceiling box will rest on the ceiling panels or other ceiling construction material.  
**WARNING: If ceiling is not accessible from above, 8" plenum clearance required to fit box through ceiling cutout.**
6. To install fixture, remove faceplate by loosening (1) 1.5mm hex head screw located on side of faceplate. Rotate faceplate counter-clockwise to remove. See Figure 1.
7. Ensure mounting claws are set to top most position and are turned in towards fixture. Mounting claws are raised and lowered via (2) T10 screws located under faceplate.
8. Push luminaire up into ceiling opening and tighten (2) T10 screws to secure luminaire into place.  
**Caution: Tighten screws evenly by hand, do not use power tools!**
9. Replace faceplate. Align grooves in faceplate with notches in fixture housing, rotate faceplate clockwise and then tighten (1) 1.5mm hex head screw to secure faceplate into place. See Figure 1.

**Figure 1:**



**Accessories**

Please refer to the appropriate accessory installation sheet for further instruction when applicable.

**Maintenance:**

Clean regularly with solvent-free cleaner removing dirt and debris. Do not use high pressure cleaners.

**Replacement Parts**

See label inside of fixture for LED replacement part number.

Consult factory for all other replacement components.

**Product Safety Warnings:**

**THIS PRODUCT MUST BE INSTALLED IN ACCORDANCE WITH THE APPLICABLE INSTALLATION CODE BY A PERSON FAMILIAR WITH THE CONSTRUCTION AND OPERATION OF THE PRODUCT AND THE HAZARDS INVOLVED.**

**MAXIMUM OF 8-12 AWG THROUGH BRANCH CIRCUIT CONDUCTOR SUITABLE FOR 90°C PERMITTED IN BOX.**

**MIN 90° SUPPLY CONNECTIONS.**

**SUITABLE FOR WET LOCATIONS. COVERED CEILING MOUNT ONLY.**

**DO NOT INSTALL INSULATION WITHIN 76 mm (3 in) OF ANY PART OF THE LUMINAIRE**

**CE PRODUIT DOIT ÊTRE INSTALLÉ SELON LE CODE D'INSTALLATION PERTINENT, PAR UNE PERSONNE QUI CONNAÎT BIEN LE PRODUIT ET SON FONCTIONNEMENT AINSI QUE LES RISQUES INHÉRENTS.**

**UN MAXIMUM DE 8 CONDUCTEURS DEDÉRIVATION 12 AWG CONVENANT POUR 90°C SONT PERMIS DANS UNE BOÎTE.**

**LES FILS D'ALIMENTATION 90°C MIN.**

**CONVIENT AUX EMPLACEMENTS MOUILLÉS. INSTALLATION SUR PLAFOND COUVERT SEULEMENT**

**NE PAS METTRE L'ISOLANT À MOINS DE 76 mm (3 po) DE TOUTEPARTIE DU LUMINAIRE**