

Tools Required:

- 3mm Hex screwdriver
- 1.5mm Hex screwdriver

Overview:

LED Watts: 24.1W
 System Watts: 28.0W
 Controllability: 0-10V dimmable to 1%
 Weight: 3.1 lbs
 Protection Class: IP65

Notice to Installer:

1. See page 2 for specific product safety warnings.
2. Luminaire is non-IC rated. Insulation must be at least 3" from luminaire.
3. Luminaire is not suitable for poured concrete construction.
4. Rough-in kit ceiling pan with integral driver and hanger brackets, part CP24239, included. Whip provided to connect fixture to ceiling pan via quick disconnect.
5. Hanger brackets are adjustable between 16" and 24".
6. Required ceiling cutout is 6-1/2".
7. Minimum ceiling thickness is 1/2".
8. Maximum ceiling thickness is 1-5/8".

Ceiling Pan Installation:

1. Measure distance between available ceiling studs.
2. Attach bar hanger brackets to ceiling pan by aligning vertically and tightening (1) flat head bar hanger screw. See Figure 1.
3. Fit bar hangers to appropriate length between ceiling studs. Ensure ceiling pan is level and nail brackets to ceiling studs. For attachment to t-bar type ceilings, bar hanger brackets can be attached to Caddy Fasteners (not included).
4. Bring supply wires to junction box on ceiling pan and make connections to driver wires:

SUPPLY WIRING CONNECTIONS:

MAIN VOLTAGE (HOT) SUPPLY WIRE TO BLACK DRIVER WIRE
 NEUTRAL (COMMON) SUPPLY WIRE TO WHITE DRIVER WIRE
 GREEN (GROUND) WIRE TO GREEN DRIVER WIRE

0-10V DIMMING (IF APPLICABLE):

DIM CONTROL (+) TO POSITIVE DRIVER DIM CONTROL WIRE
 DIM CONTROL (-) TO NEGATIVE DRIVER DIM CONTROL WIRE

5. The ceiling cutout for fixture is 6-1/2" OD. The finished ceiling may now be installed.

Luminaire Installation:

1. Remove faceplate by loosening (1) 1.5mm hex head screw located on side of faceplate. Rotate faceplate counter-clockwise to remove. See Figure 2.
2. Ensure mounting claws are set to top most position and are turned in towards fixture. Mounting claws are raised and lowered via (2) 3 mm. hex screws located under faceplate.
3. Connect whip from fixture to ceiling pan via quick disconnect.
4. Push luminaire up into ceiling opening and tighten (2) 3 mm. hex screws to secure luminaire into place.

Caution: Tighten screws evenly by hand, do not use power tools!

5. Replace faceplate. Align grooves in faceplate with notches in fixture housing, rotate faceplate clockwise and then tighten (1) 1.5mm hex head screw to secure faceplate into place. See Figure 2.

Accessories

Please refer to the appropriate accessory installation sheet for further instruction when applicable.

Dimensions

A: 6-7/8"
B: 1/4"
C: 4-1/2"
D: 18"

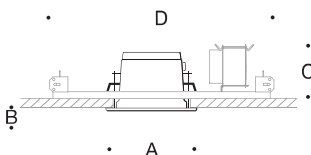


Figure 1:

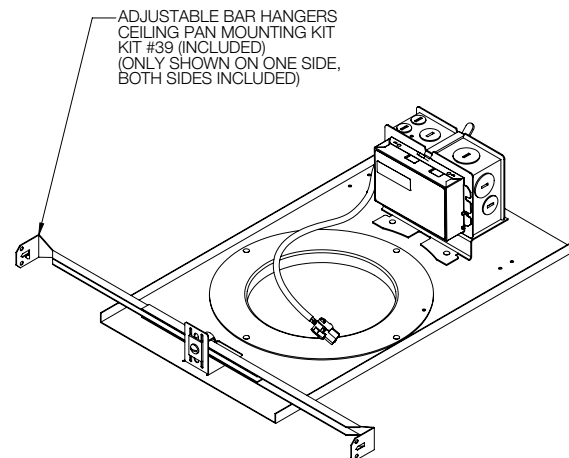
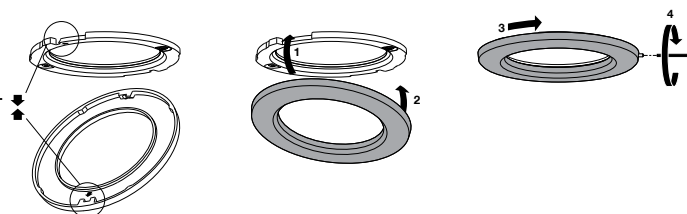


Figure 2:



Maintenance:

Clean regularly with solvent-free cleaner removing dirt and debris. Do not use high pressure cleaners.

Replacement Parts

See label inside of fixture for LED replacement part number.

Consult factory for all other replacement components.

Product Safety Warnings:

THIS PRODUCT MUST BE INSTALLED IN ACCORDANCE WITH THE APPLICABLE INSTALLATION CODE BY A PERSON FAMILIAR WITH THE CONSTRUCTION AND OPERATION OF THE PRODUCT AND THE HAZARDS INVOLVED.

MAXIMUM OF 8-12 AWG THROUGH BRANCH CIRCUIT CONDUCTOR SUITABLE FOR 90°C PERMITTED IN BOX.

MIN 90° SUPPLY CONNECTIONS.

SUITABLE FOR WET LOCATIONS. COVERED CEILING MOUNT ONLY.

DO NOT INSTALL INSULATION WITHIN 76 mm (3 in) OF ANY PART OF THE LUMINAIRE

CE PRODUIT DOIT ÊTRE INSTALLÉ SELON LE CODE D'INSTALLATION PERTINENT, PAR UNE PERSONNE QUI CONNAÎT BIEN LE PRODUIT ET SON FONCTIONNEMENT AINSI QUE LES RISQUES INHÉRENTS.

UN MAXIMUM DE 8 CONDUCTEURS DEDÉRIVATION 12 AWG CONVENANT POUR 90°C SONT PERMIS DANS UNE BOÎTE.

LES FILS D'ALIMENTATION 90°C MIN.

CONVIENT AUX EMPLACEMENTS MOUILLÉS. INSTALLATION SUR PLAFOND COUVERT SEULEMENT

NE PAS METTRE L'ISOLANT À MOINS DE 76 mm (3 po) DE TOUTE PARTIE DU LUMINAIRE