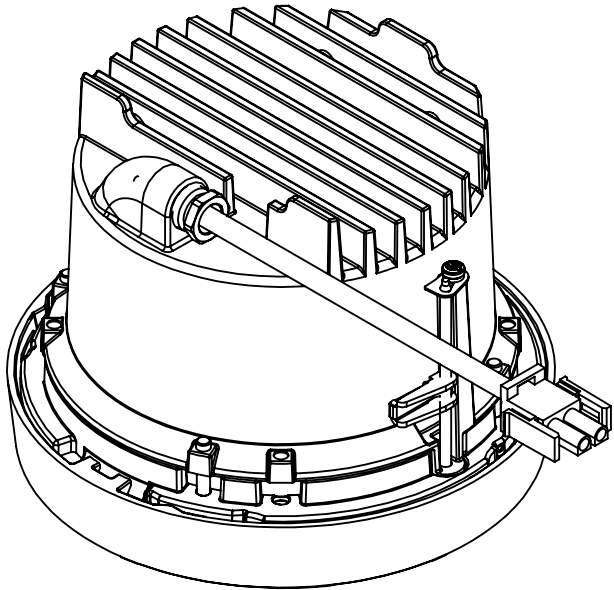


REV	CHANGED BY	DESCRIPTION	DATE



- NOTES:
1. INCLUDES CP24237 - CEILING PAN
 2. INCLUDES KIT #39 - CEILING PAN MOUNTING KIT
 3. FIXTURE REQUIRES A CEILING OPENING OF 5-1/4"
 4. MINIMUM CEILING THICKNESS OF 1/2"
 5. MAXIMUM CEILING THICKNESS 1-1/4"

BEGA

1000 BEGA Way, Carpinteria, California 93013 P (805) 684-0533 - www.bega-us.com

APPROVED: _____ DATE: _____
TYPE: _____

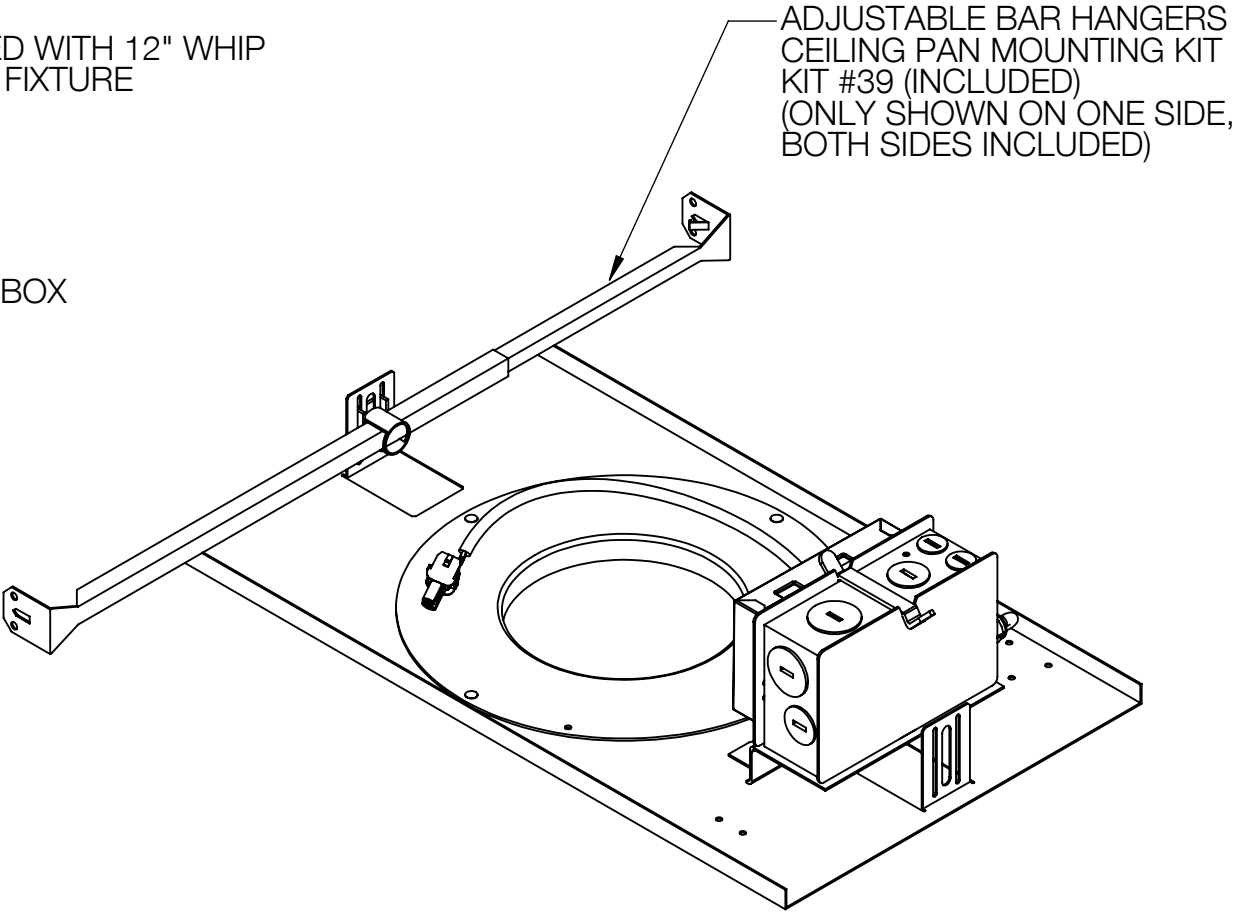
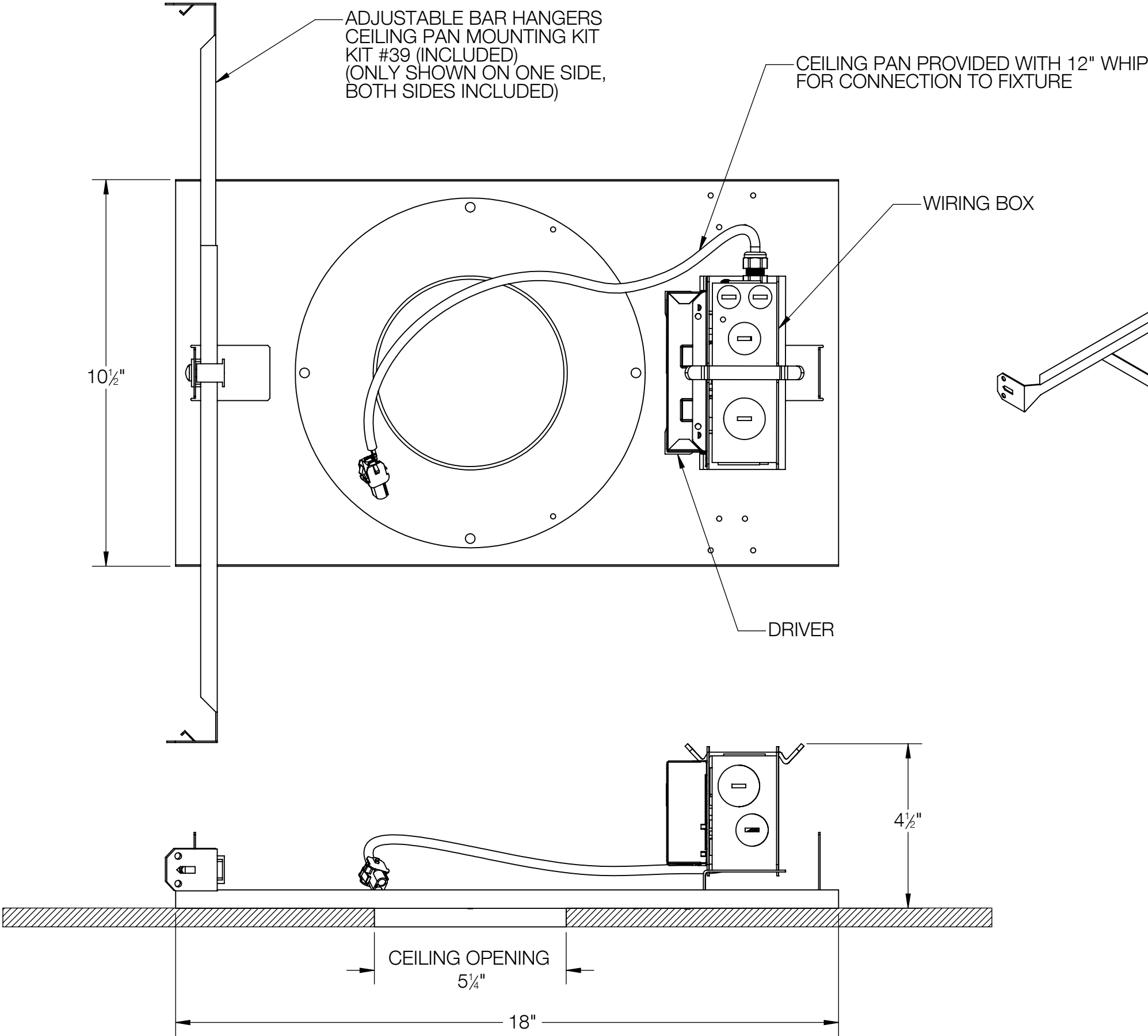
DESCRIPTION:
DOWNLIGHT - VERY WIDE BEAM

PROPRIETARY AND CONFIDENTIAL
THE INFORMATION CONTAINED IN THIS DRAWING IS THE SOLE PROPERTY
OF BEGA NORTH AMERICA, INC.
ANY REPRODUCTION IN PART OR AS A WHOLE WITHOUT THE WRITTEN
PERMISSION OF BEGA NORTH AMERICA, INC. IS PROHIBITED.

SIZE
B
PART NO.
24447
REV
-

NOT TO SCALE 8/8/2023 SHEET 1 OF 2

REV	CHANGED BY	DESCRIPTION	DATE



- NOTES:
1. INCLUDES KIT #39 - CEILING PAN MOUNTING KIT
 2. HANGER BRACKETS ADJUSTABLE BETWEEN 16" AND 24"
 3. FIXTURE REQUIRES A CEILING OPENING OF 5-1/4"
 4. MINIMUM CEILING THICKNESS OF 1/2"
 5. MAXIMUM CEILING THICKNESS 1-1/4"

BEGA				
1000 BEGA Way, Carpinteria, California 93013			P (805) 684-0533 - www.bega-us.com	
APPROVED: _____		DATE: _____		DESCRIPTION: CEILING PAN
TYPE: _____				
PROPRIETARY AND CONFIDENTIAL		SIZE	PART NO.	REV
THE INFORMATION CONTAINED IN THIS DRAWING IS THE SOLE PROPERTY OF BEGA NORTH AMERICA, INC. ANY REPRODUCTION IN PART OR AS A WHOLE WITHOUT THE WRITTEN PERMISSION OF BEGA NORTH AMERICA, INC. IS PROHIBITED.		B	CP24237	-
		NOT TO SCALE	8/8/2023	SHEET 2 OF 2