

Application

Flush-mounted downlights create a very clean ceiling appearance for atriums, canopies, and other interior and exterior locations. Designed for use in pre-cast or cast-in-place concrete ceilings. Standard housing designed for use with formwork and no plaster finish. Select the appropriate housing option for use with a plaster finish.

Materials

- Clear safety glass
- Marine grade, copper free (≤0.3% copper content) A360.0 aluminum alloy
- Stainless steel housing
- Silicone applied robotically to casting, plasma treated for increased adhesion
- Aluminum installation housing
- Pure anodized aluminum reflector surface
- Silicone optic with excellent high temperature and UV stability
- BEGA Hybrid Optics®

NRTL listed to North American Standards, suitable for wet locations
Protection class IP 65

Weight: 6.4 lbs.

Electrical

- Operating voltage120-277V AC
- Minimum start temperature-30° C
- LED module wattage16.8 W
- System wattage20.0 W
- Controllability0-10V, TRIAC, and ELV dimmable
- Color rendering indexRa > 80
- Luminaire lumens1929 lm
- LED service life (L70)60000 hrs

LED color temperature

- 4000K (K4)
- 3500K (K35)
- 3000K (K3)
- 2700K (K27)

BEGA can supply you with suitable LED replacement modules for up to 20 years after the purchase of LED luminaires - see website for details

Finish

Stainless steel finish. Custom colors not available.

Type:

BEGA Product:

Project:

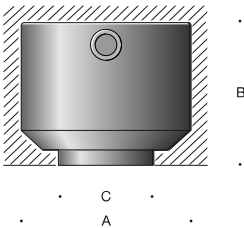
Modified:

Available options

- BB24496 Installation housing, concrete with plaster (replaces included installation housing, pre-shippable)

Included (available for pre-shipment)

- BB24482 Installation housing, concrete only



Downlight · Very wide beam

	LED	□	A	B	C
B24510	16.8 W	83°	9 ⁵ / ₈	7 ⁵ / ₈	5 ³ / ₈

