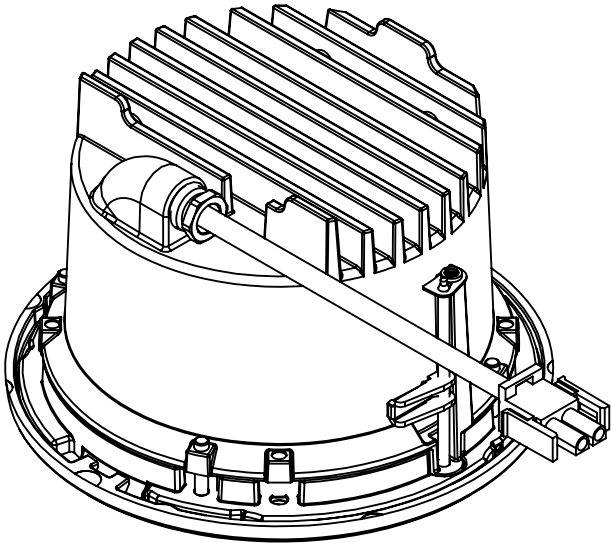
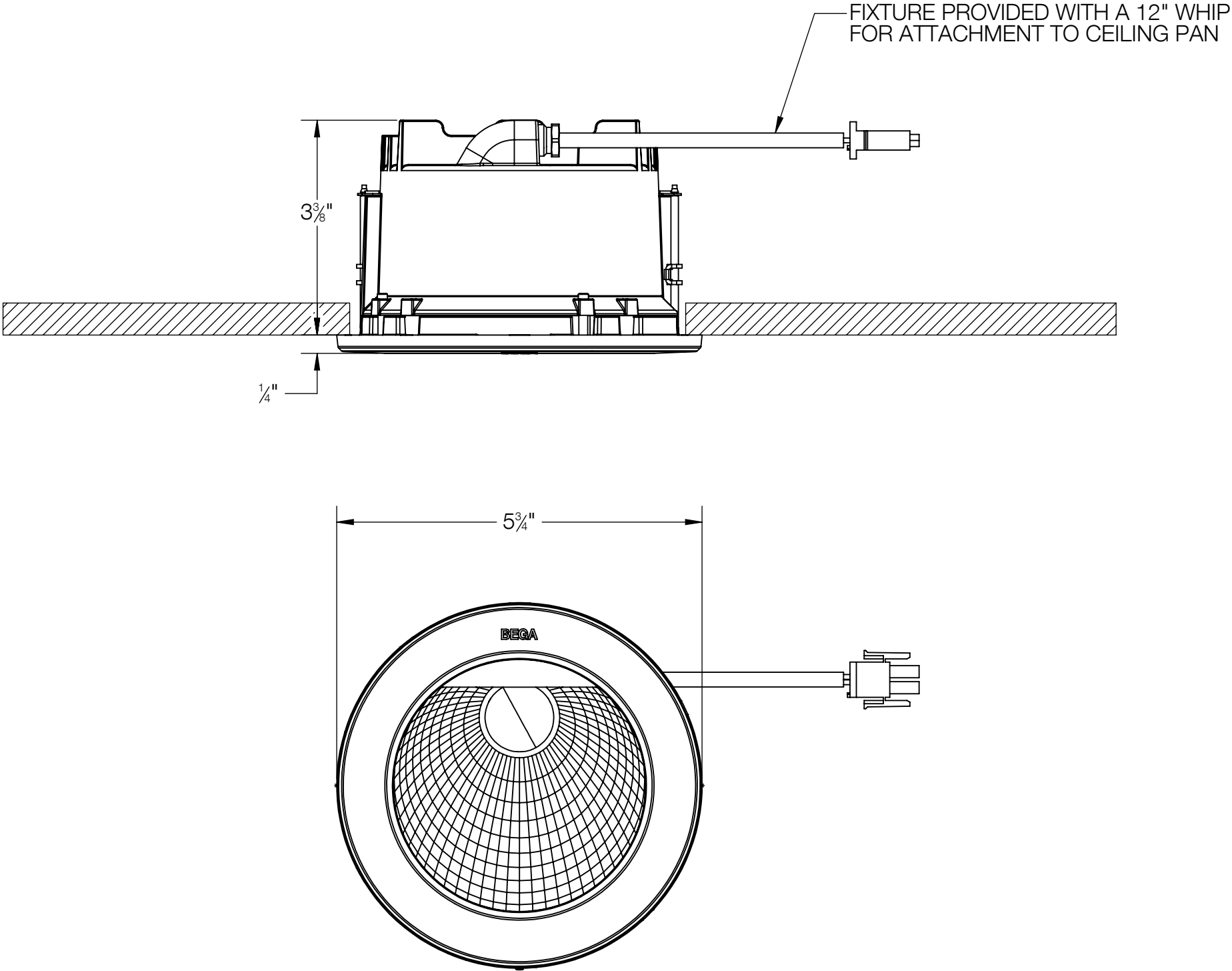


REV	CHANGED BY	DESCRIPTION	DATE

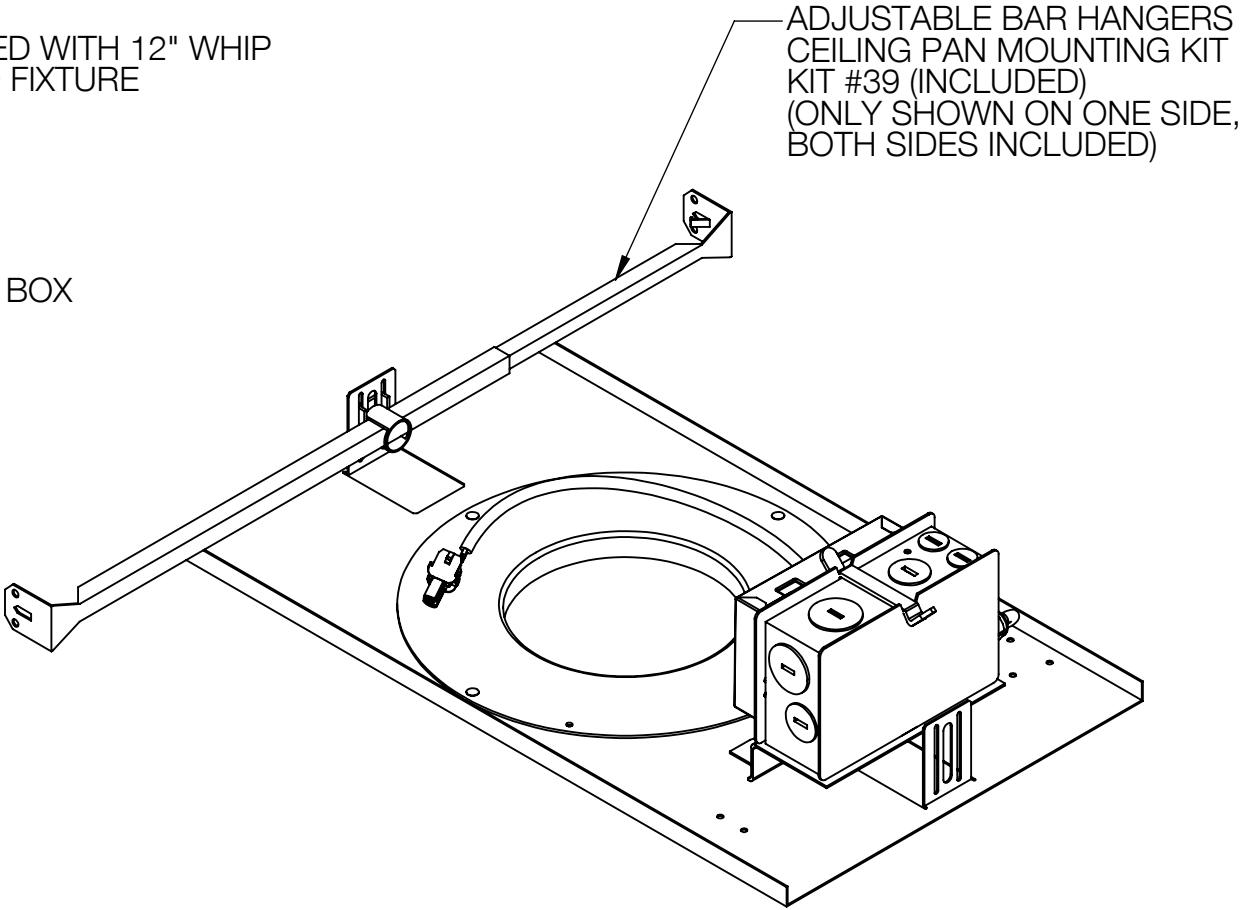
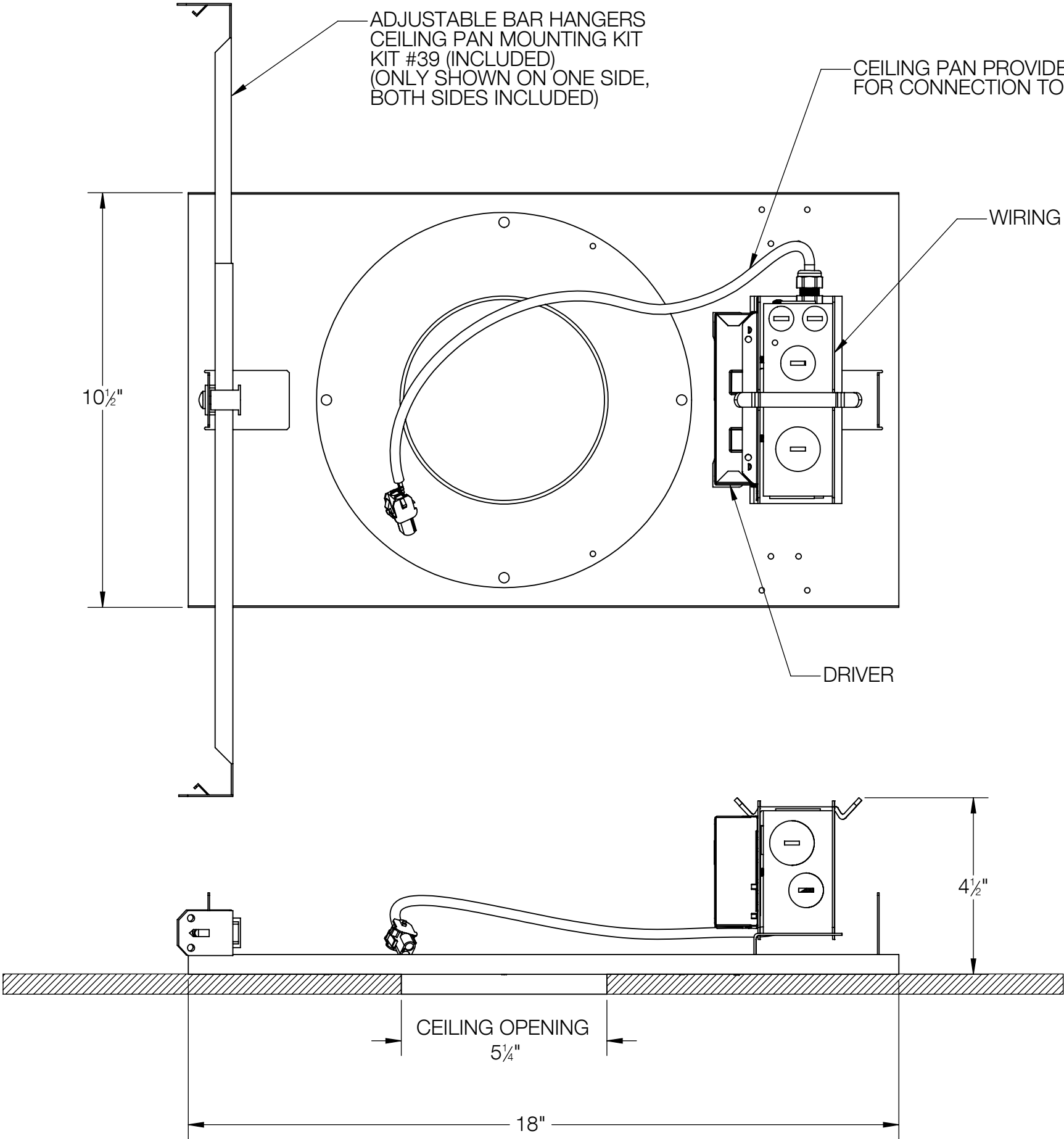


- NOTES:
1. INCLUDES CP24261 - CEILING PAN
  2. INCLUDES KIT #39 - CEILING PAN MOUNTING KIT
  3. FIXTURE REQUIRES A CEILING OPENING OF 5-1/4"
  4. MINIMUM CEILING THICKNESS 1/2"
  5. MAXIMUM CEILING THICKNESS 1-1/4"

**BEGA**

1000 BEGA Way, Carpinteria, California 93013		P (805) 684-0533 - <a href="http://www.bega-us.com">www.bega-us.com</a>	
APPROVED: _____ DATE: _____		DESCRIPTION: DOWNLIGHT - ASYMMETRIC WALL WASHER	
TYPE: _____			
PROPRIETARY AND CONFIDENTIAL THE INFORMATION CONTAINED IN THIS DRAWING IS THE SOLE PROPERTY OF BEGA NORTH AMERICA, INC. ANY REPRODUCTION IN PART OR AS A WHOLE WITHOUT THE WRITTEN PERMISSION OF BEGA NORTH AMERICA, INC. IS PROHIBITED.		SIZE <b>B</b>	PART NO. <b>24565</b>
		REV -	
NOT TO SCALE		8/8/2023	SHEET 1 OF 2

REV	CHANGED BY	DESCRIPTION	DATE



- NOTES:
1. INCLUDES KIT #39 - CEILING PAN MOUNTING KIT
  2. HANGER BRACKETS ADJUSTABLE BETWEEN 16" AND 24"
  3. FIXTURE REQUIRES A CEILING OPENING OF 5-1/4"
  4. MINIMUM CEILING THICKNESS 1/2"
  5. MAXIMUM CEILING THICKNESS 1-1/4"

BEGA				
1000 BEGA Way, Carpinteria, California 93013			P (805) 684-0533 - <a href="http://www.bega-us.com">www.bega-us.com</a>	
APPROVED: _____		DATE: _____		DESCRIPTION: CEILING PAN
TYPE: _____				
PROPRIETARY AND CONFIDENTIAL		SIZE	PART NO.	REV
THE INFORMATION CONTAINED IN THIS DRAWING IS THE SOLE PROPERTY OF BEGA NORTH AMERICA, INC.		B	CP24261	-
ANY REPRODUCTION IN PART OR AS A WHOLE WITHOUT THE WRITTEN PERMISSION OF BEGA NORTH AMERICA, INC. IS PROHIBITED.		NOT TO SCALE		8/8/2023
				SHEET 2 OF 2