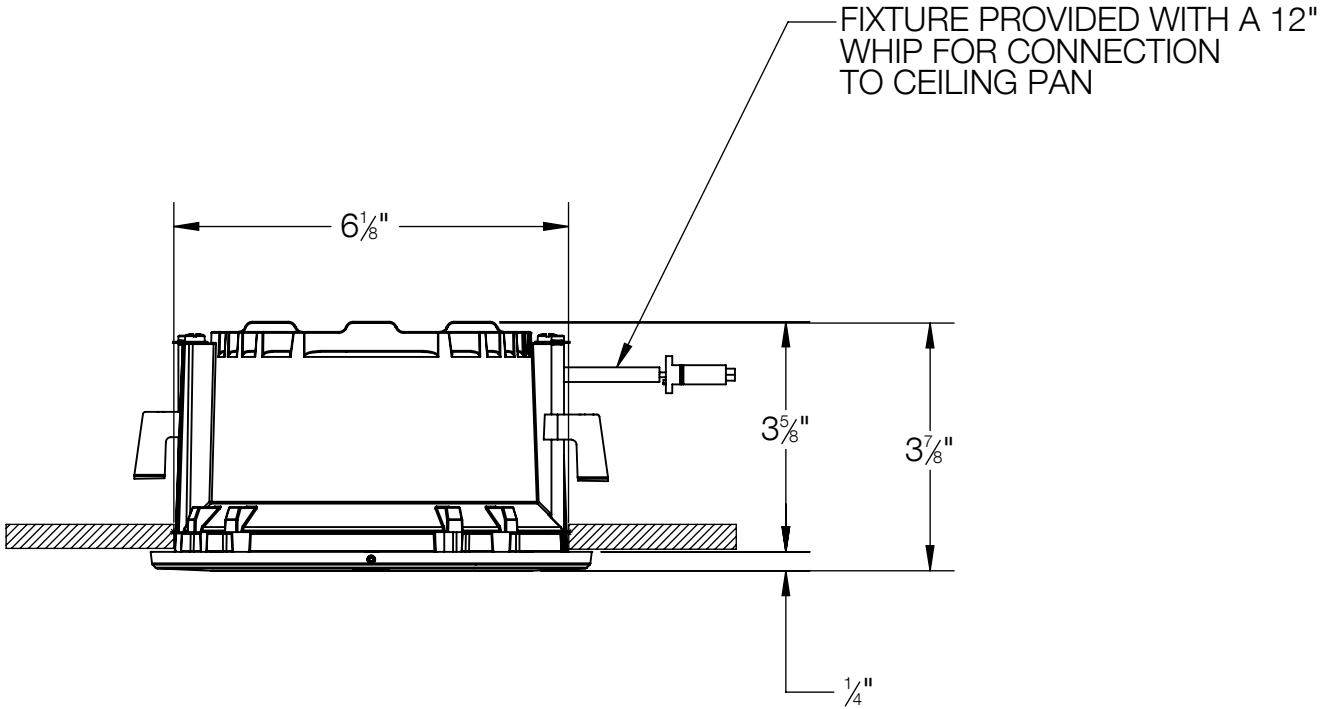
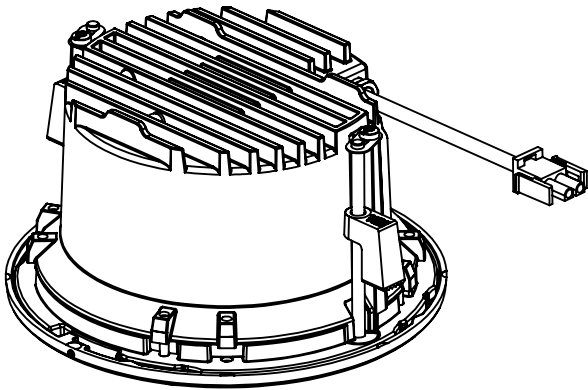
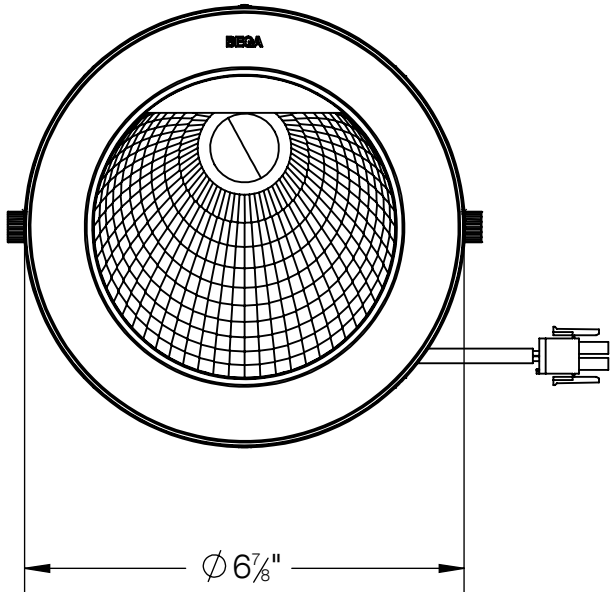


REV	CHANGED BY	DESCRIPTION	DATE

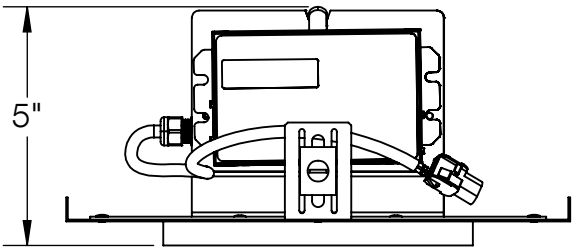
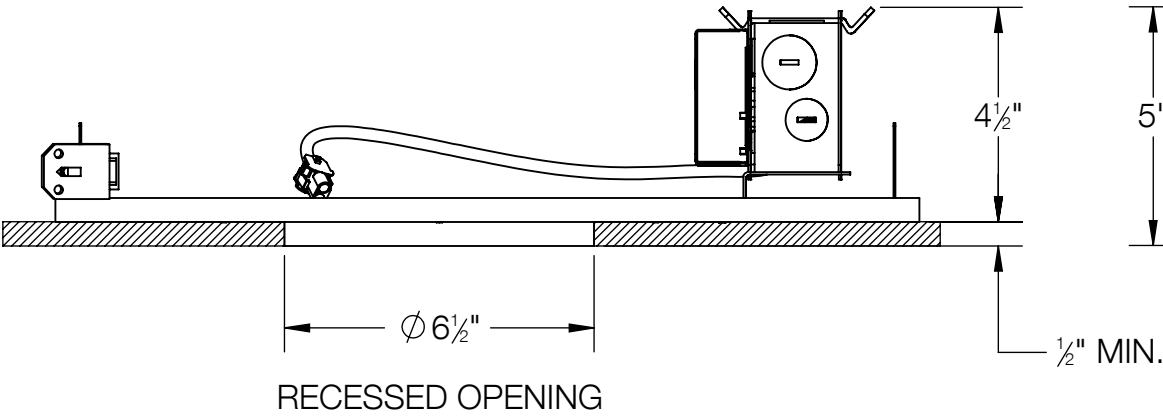
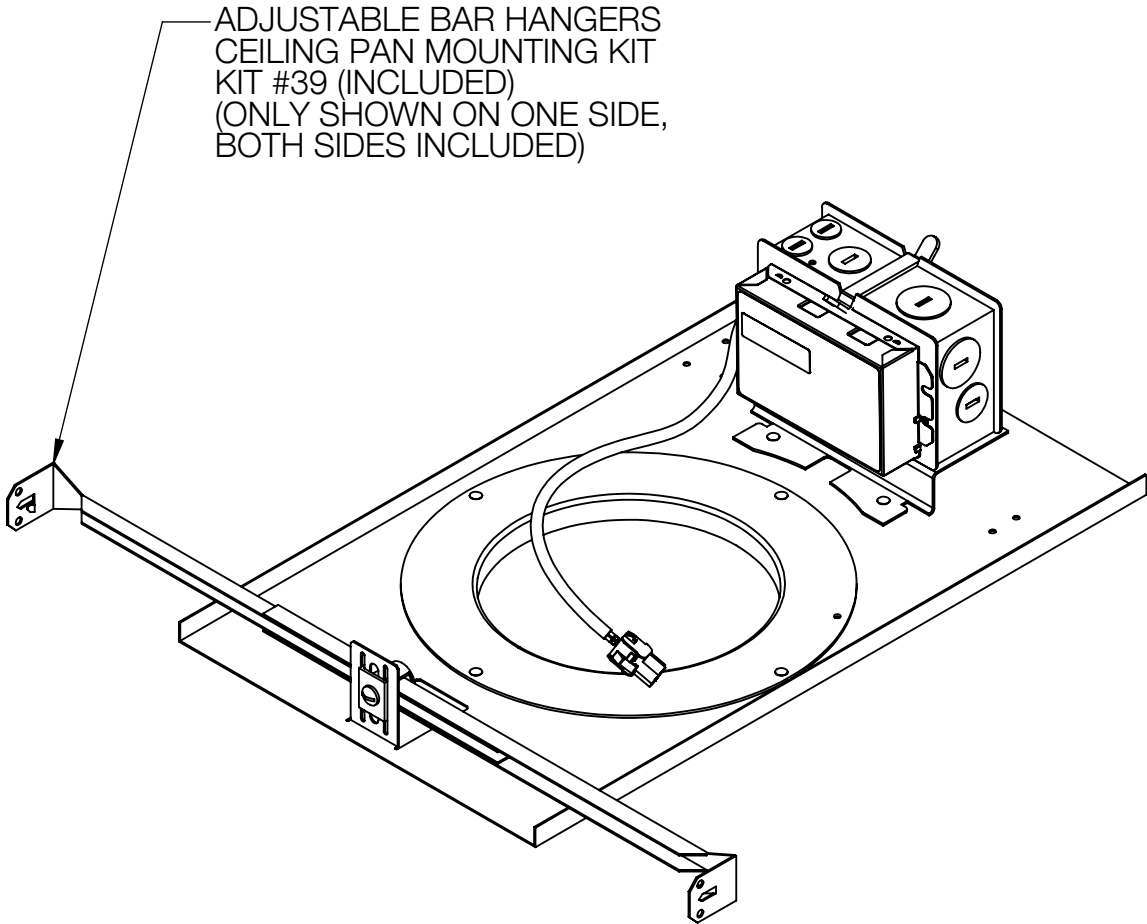
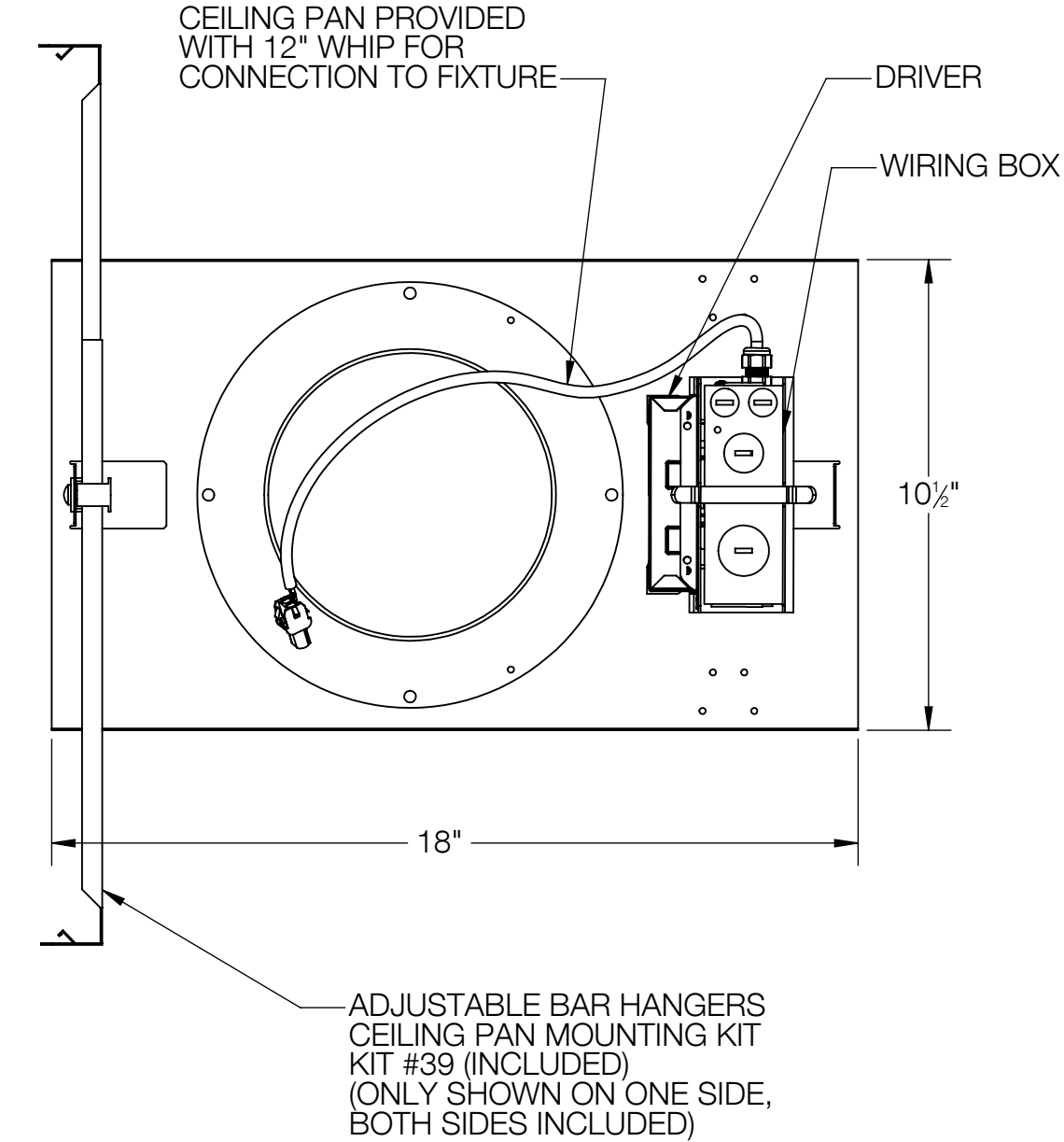


NOTES:

1. INCLUDES CP24263 - CEILING PAN
2. INCLUDES KIT #39 - CEILING PAN MOUNTING KIT
3. 6-1/2" DIAMETER OPENING REQUIRED FOR INSTALL
4. MINIMUM CEILING THICKNESS: 1/2"
5. MAXIMUM CEILING THICKNESS: 1-5/8"

BEGA				
1000 BEGA Way, Carpinteria, California 93013			P (805) 684-0533 - www.bega-us.com	
APPROVED: _____ DATE: _____		DESCRIPTION: DOWNLIGHT - ASYMMETRIC WALL WASHER		
TYPE: _____				
PROPRIETARY AND CONFIDENTIAL THE INFORMATION CONTAINED IN THIS DRAWING IS THE SOLE PROPERTY OF BEGA NORTH AMERICA, INC. ANY REPRODUCTION IN PART OR AS A WHOLE WITHOUT THE WRITTEN PERMISSION OF BEGA NORTH AMERICA, INC. IS PROHIBITED.		SIZE	PART NO.	REV
		B	24 566	-
		NOT TO SCALE	9/19/2023	SHEET 1 OF 2

REV	CHANGED BY	DESCRIPTION	DATE



- NOTES:
1. INCLUDES KIT #39 - CEILING PAN MOUNTING KIT
 2. HANGER BRACKETS ADJUSTABLE BETWEEN 16" AND 24"
 3. 6-1/2" DIAMETER OPENING REQUIRED FOR INSTALL
 4. MINIMUM CEILING THICKNESS: 1/2"
 5. MAXIMUM CEILING THICKNESS: 1-5/8"

BEGA				
1000 BEGA Way, Carpinteria, California 93013			P (805) 684-0533 - www.bega-us.com	
APPROVED: _____		DATE: _____		DESCRIPTION: CEILING PAN
TYPE: _____				
PROPRIETARY AND CONFIDENTIAL		SIZE	PART NO.	REV
THE INFORMATION CONTAINED IN THIS DRAWING IS THE SOLE PROPERTY OF BEGA NORTH AMERICA, INC. ANY REPRODUCTION IN PART OR AS A WHOLE WITHOUT THE WRITTEN PERMISSION OF BEGA NORTH AMERICA, INC. IS PROHIBITED.		B	CP24263	-
NOT TO SCALE		9/19/2023	SHEET 2 OF 2	