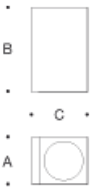


Tools Required:

- 3mm hex key
- Phillips medium screwdriver
- Adjustable wrench

Weight: 7.28 lbs.



Dimensions
A: 5-7/8 "
B: 10-5/8 "
C: 6-7/8 "



Notice to Installer for 24 593:

1. Mounts directly to a standard 4" octagonal recessed wiring box (by others) using mounting kit (provided).
2. This product must be installed in accordance with the applicable installation code by a person familiar with the construction and operation of the product and the hazards involved.
3. LEDs are high-quality electronic components! Please avoid touching the light output opening of the LED directly during installation.

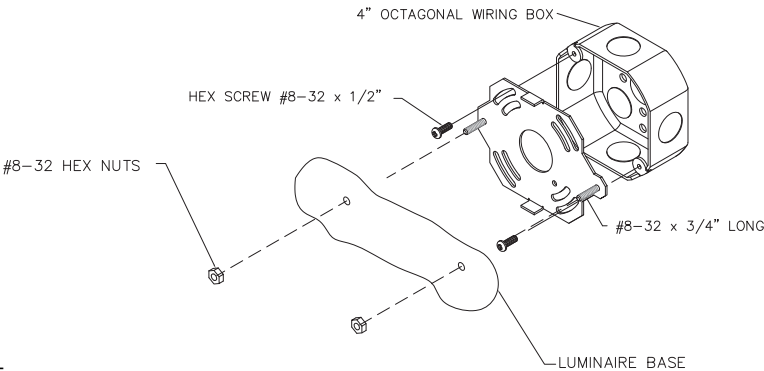
24 593 - Installation:

1. Loosen (2) 3mm set screws under luminaire and remove luminaire base from main casting.
2. Feed luminaire wires through luminaire base and mounting plate.
3. Make supply wiring and luminaire wiring connections in the wiring box:
MAIN VOLTAGE SUPPLY WIRE TO BLACK LUMINAIRE WIRE
NEUTRAL (COMMON) SUPPLY WIRE TO WHITE LUMINAIRE WIRE
GREEN GROUND WIRE TO GREEN LUMINAIRE WIRE

Dimming (if applicable):

- DIMMING CONTROL WIRE (+) TO POSITIVE DRIVER DIM CONTROL WIRE
 - DIMMING CONTROL WIRE (-) TO NEGATIVE DRIVER DIM CONTROL WIRE
4. Attach luminaire base to wiring box using mounting kit and hardware provided. Choose screw slots based on wiring box such that fixture will mount straight, with lens pointing downward.
 5. Place a bead of silicone around the outer edge of the back side of the luminaire base plate that will come in contact with the finished wall (exterior applications only).
 6. Replace outer casting and tighten (2) set screws, making sure the gasket is seated properly.

Figure 1: Generic Image



Relamping/Maintenance

No relamping required.

Accessories

Please refer to the appropriate accessory installation sheet for further instruction when applicable.

Replacement Parts

Description	Part No
LED module (3000K)	(x2) LED-0683/830
LED module (4000K)	(x2) LED-0683/840
LED Driver (120-277V)	75985-03

Lamp: 38.4W LED Module

THIS PRODUCT MUST BE INSTALLED IN ACCORDANCE WITH THE APPLICABLE INSTALLATION CODE BY A PERSON FAMILIAR WITH THE CONSTRUCTION AND OPERATION OF THE PRODUCT AND THE HAZARDS INVOLVED. SUITABLE FOR WET LOCATIONS.

MIN 90°C SUPPLY CONDUCTORS.

CE PRODUIT DOIT ÊTRE INSTALLÉ SELON LE CODE D'INSTALLATION PERTINENT, PAR UNE PERSONNE QUI CONNAÎT BIEN LE PRODUIT ET SON FONCTIONNEMENT AINSI QUE LES RISQUES INHÉRENTS. CONVIENT AUX EMBLEMENTS MOUILLÉS.

LES FILS D'ALIMENTATION 90°C MIN.
