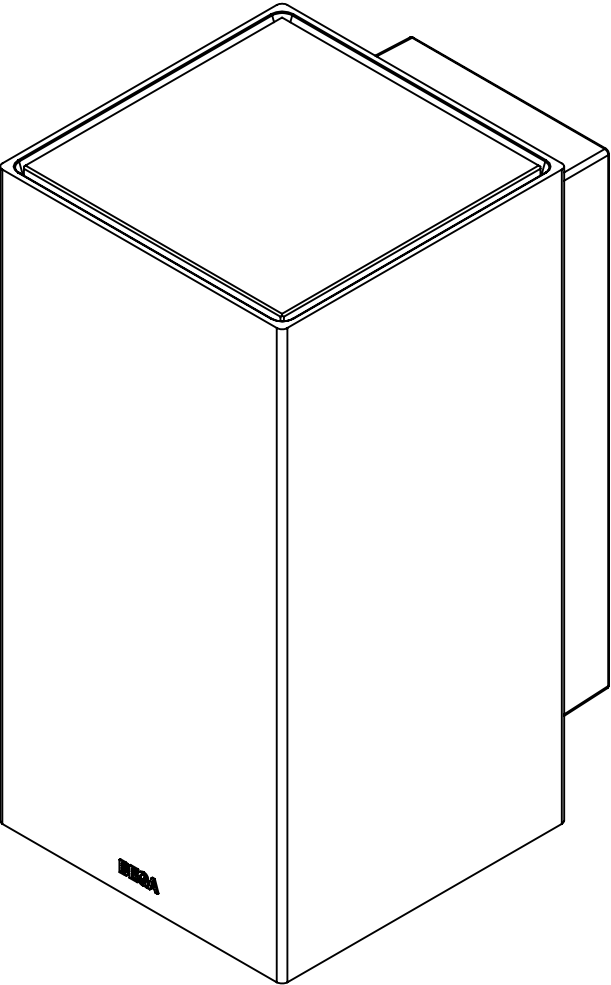


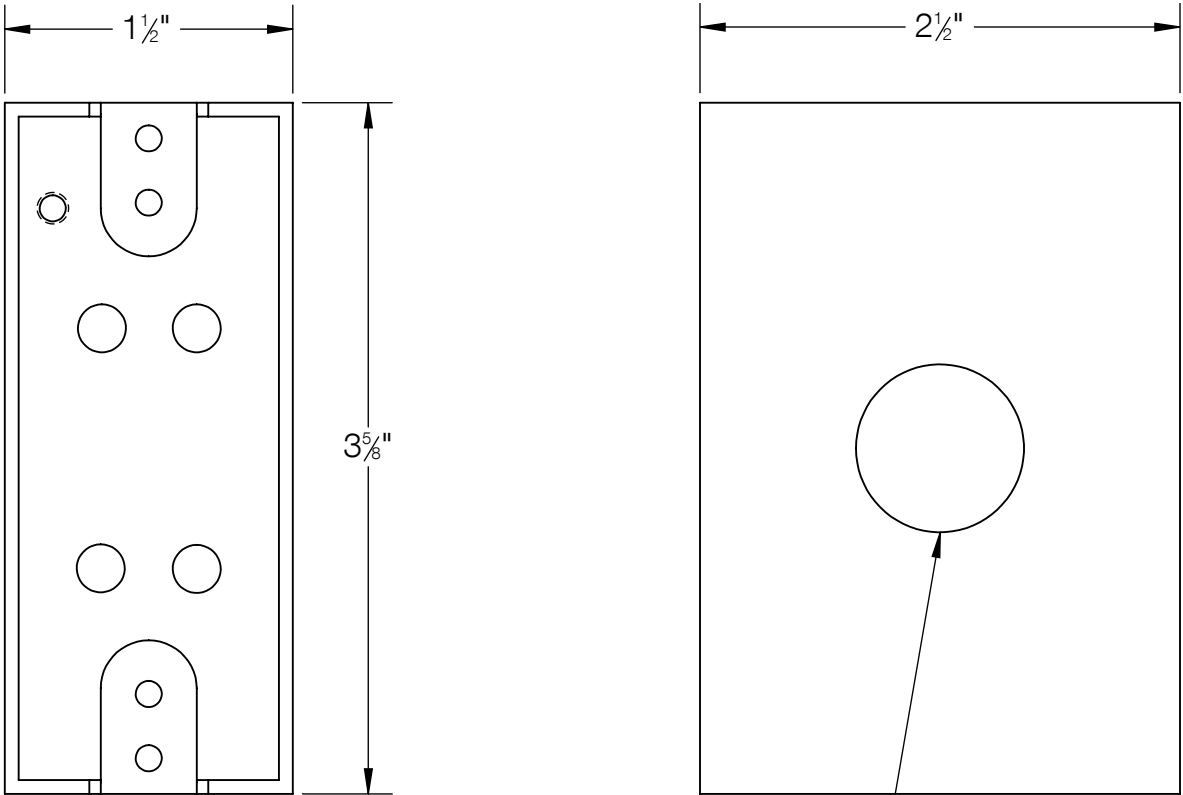
REV	CHANGED BY	DESCRIPTION	DATE



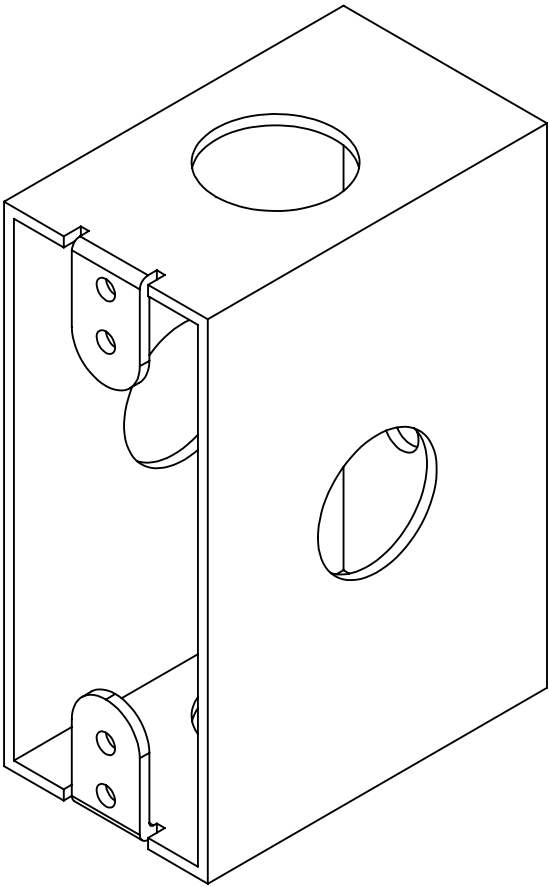
- NOTES:
- 1. INCLUDES 19542 - SMALL OPENING LINEAR WIRING BOX
 - 2. INCLUDES KIT #107 FOR ATTACHMENT TO WIRING BOX

BEGA				
1000 BEGA Way, Carpinteria, California 93013			P (805) 684-0533 - www.bega-us.com	
APPROVED: _____ DATE: _____		DESCRIPTION: WALL LUMINAIRE · VERY WIDE BEAM IN BOTH DIRECTIONS		
TYPE: _____				
PROPRIETARY AND CONFIDENTIAL THE INFORMATION CONTAINED IN THIS DRAWING IS THE SOLE PROPERTY OF BEGA NORTH AMERICA, INC. ANY REPRODUCTION IN PART OR AS A WHOLE WITHOUT THE WRITTEN PERMISSION OF BEGA NORTH AMERICA, INC. IS PROHIBITED.		SIZE B	PART NO. 24614	REV -
		NOT TO SCALE	6/24/2024	SHEET 1 OF 2

REV	CHANGED BY	DESCRIPTION	DATE



1/2" TRADE SIZE CONDUIT
ENTRY (4 PLACES)



NOTE: SMALL OPENING LINEAR WIRING BOX REQUIRED FOR
INSTALLATION

BEGA				
1000 BEGA Way, Carpinteria, California 93013			P (805) 684-0533 - www.bega-us.com	
APPROVED: _____ DATE: _____		DESCRIPTION: SMALL OPENING LINEAR WIRING BOX		
TYPE: _____				
PROPRIETARY AND CONFIDENTIAL THE INFORMATION CONTAINED IN THIS DRAWING IS THE SOLE PROPERTY OF BEGA NORTH AMERICA, INC. ANY REPRODUCTION IN PART OR AS A WHOLE WITHOUT THE WRITTEN PERMISSION OF BEGA NORTH AMERICA, INC. IS PROHIBITED.		SIZE	PART NO.	REV
		B	19542	-
		NOT TO SCALE	6/24/2024	SHEET 2 OF 2