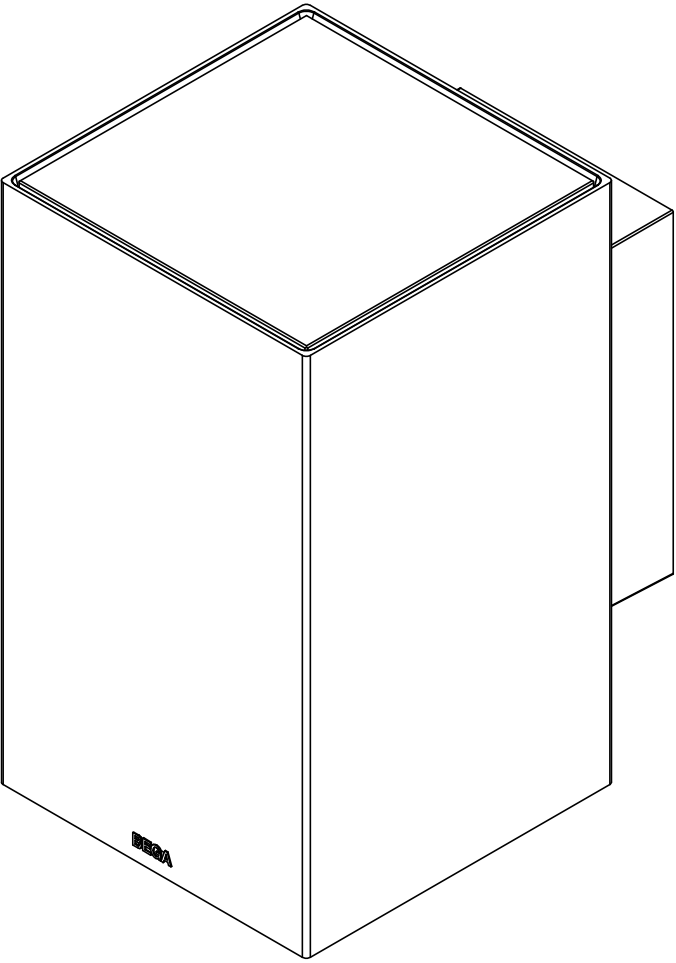


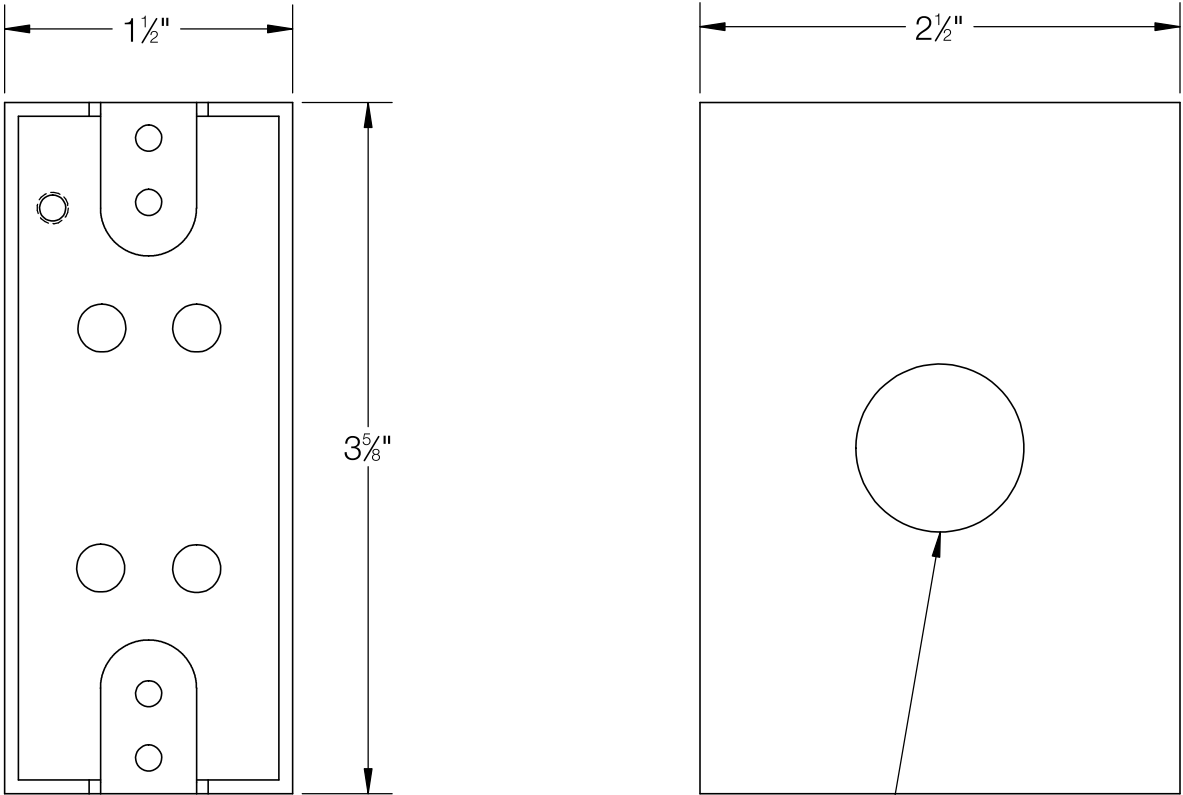
REV	CHANGED BY	DESCRIPTION	DATE



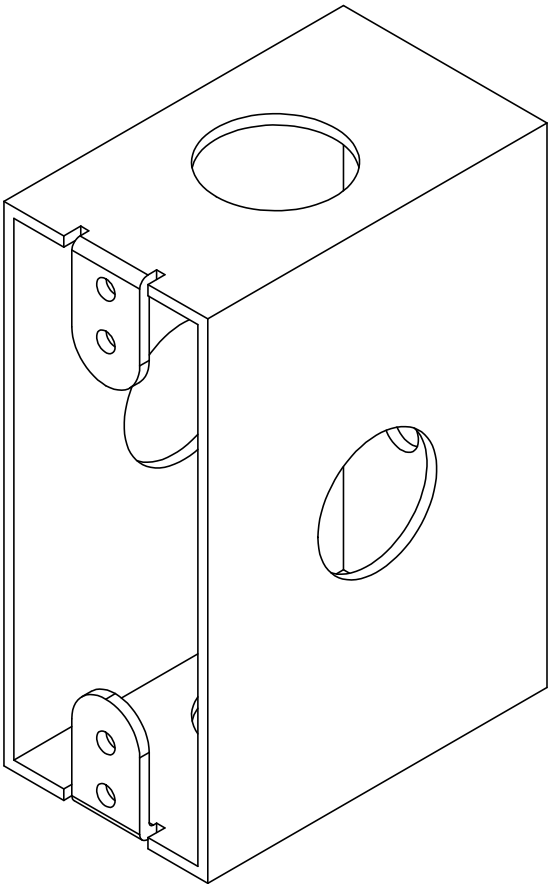
- NOTES:
- 1. INCLUDES 19542 - SMALL OPENING LINEAR WIRING BOX
 - 2. INCLUDES KIT #107 FOR ATTACHMENT TO WIRING BOX

BEGA				
1000 BEGA Way, Carpinteria, California 93013			P (805) 684-0533 - www.bega-us.com	
APPROVED: _____		DATE: _____		DESCRIPTION:
TYPE: _____				WALL LUMINAIRE · NARROW BEAM · VERY WIDE BEAM
PROPRIETARY AND CONFIDENTIAL THE INFORMATION CONTAINED IN THIS DRAWING IS THE SOLE PROPERTY OF BEGA NORTH AMERICA, INC. ANY REPRODUCTION IN PART OR AS A WHOLE WITHOUT THE WRITTEN PERMISSION OF BEGA NORTH AMERICA, INC. IS PROHIBITED.		SIZE B	PART NO. 24618	REV -
		NOT TO SCALE	7/19/2024	SHEET 1 OF 2

REV	CHANGED BY	DESCRIPTION	DATE



1/2" TRADE SIZE CONDUIT
ENTRY (4 PLACES)



NOTE: SMALL OPENING LINEAR WIRING BOX REQUIRED FOR
INSTALLATION

BEGA				
1000 BEGA Way, Carpinteria, California 93013			P (805) 684-0533 - www.bega-us.com	
APPROVED: _____		DATE: _____		DESCRIPTION: SMALL OPENING LINEAR WIRING BOX
TYPE: _____				
PROPRIETARY AND CONFIDENTIAL <small>THE INFORMATION CONTAINED IN THIS DRAWING IS THE SOLE PROPERTY OF BEGA NORTH AMERICA, INC. ANY REPRODUCTION IN PART OR AS A WHOLE WITHOUT THE WRITTEN PERMISSION OF BEGA NORTH AMERICA, INC. IS PROHIBITED.</small>		SIZE B	PART NO. 19542	REV -
		NOT TO SCALE	7/19/2024	SHEET 2 OF 2