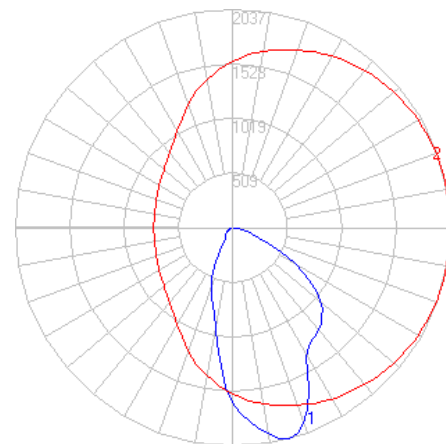


BEGA

File: 24640K4_BEGA_IES.ies

TEST: BE_24640K4
 TEST LAB: BEGA
 DATE: 7/13/2021
 LUMINAIRE: 24 640K4
 LAMP: 23.2W LED



Characteristics

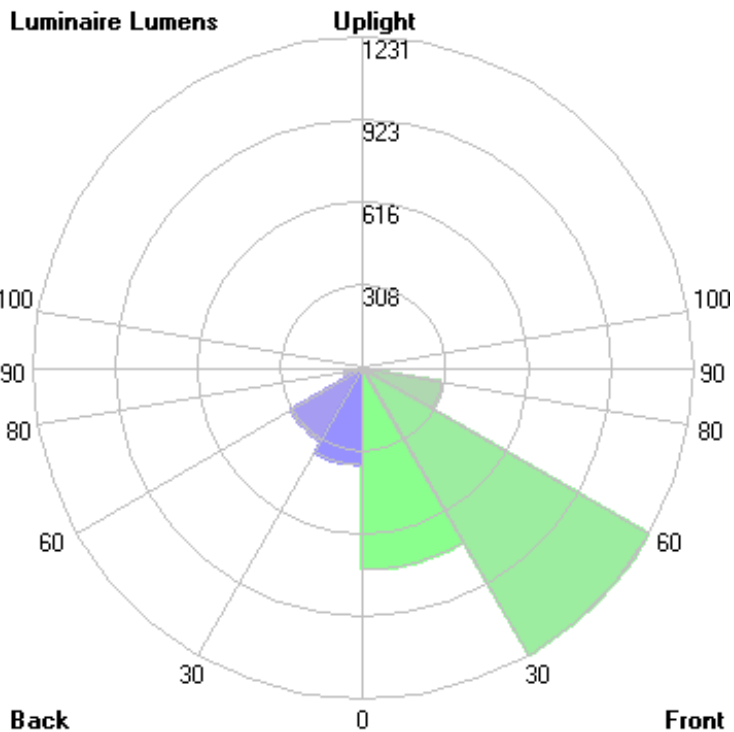
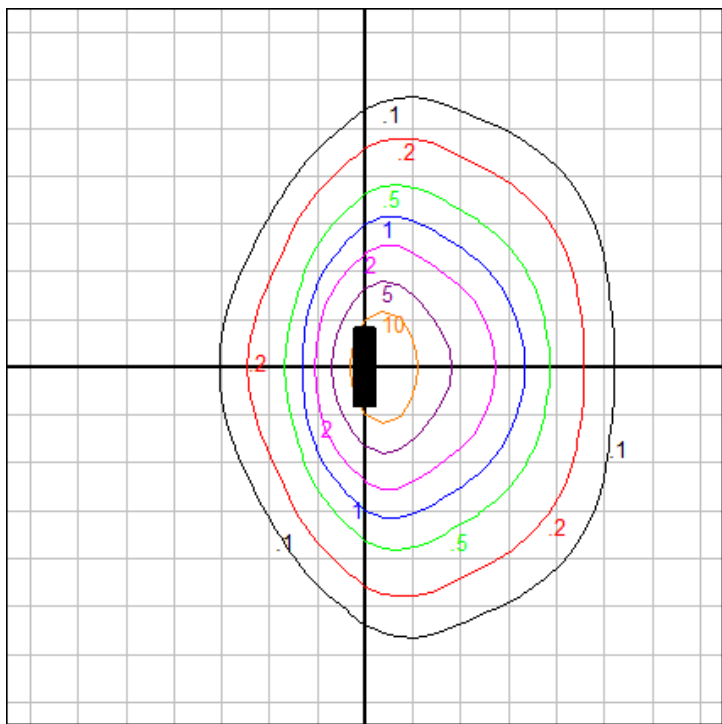
IES Classification	Type II
Longitudinal Classification	Very Short
Lumens Per Lamp	N.A. (absolute)
Total Lamp Lumens	N.A. (absolute)
Luminaire Lumens	3034
Downward Total Efficiency	N.A.
Total Luminaire Efficiency	N.A.
Luminaire Efficacy Rating (LER)	108
Total Luminaire Watts	28
Ballast Factor	1.00
Upward Waste Light Ratio	0.00
Max. Cd.	2037 (355H, 15V)
Max. Cd. (<90 Vert.)	2037 (355H, 15V)
Max. Cd. (At 90 Deg. Vert.)	.3 (0.0%Lum)
Max. Cd. (80 to <90 Deg. Vert.)	97.8 (3.2%Lum)
Cutoff Classification (deprecated)	N.A. (absolute)

Lum. Classification System (LCS)

LCS Zone	Lumens	%Lamp	%Lum
FL (0-30)	749.4	N.A.	24.7
FM (30-60)	1231.0	N.A.	40.6
FH (60-80)	297.3	N.A.	9.8
FVH(80-90)	13.0	N.A.	0.4
BL (0-30)	361.1	N.A.	11.9
BM (30-60)	311.3	N.A.	10.3
BH (60-80)	66.8	N.A.	2.2
BVH(80-90)	3.9	N.A.	0.1
UL (90-100)	< 0.05	N.A.	0.0
UH (100-180)	0.0	N.A.	0.0
Total	3033.8	N.A.	100.0

BUG Rating B1-U0*-G1

*Fixture has measured rating of U1 due to testing above 90 degrees and stray light from reflection off of the fixture body. Upon visual inspection of luminaire, it has a flat lens and opaque sides, there is no significant uplift (<0.5%), and it has therefore been assigned a value of U0 when installed in a downward orientation. Consult factory for more information.



Mounting Height: 10 ft.

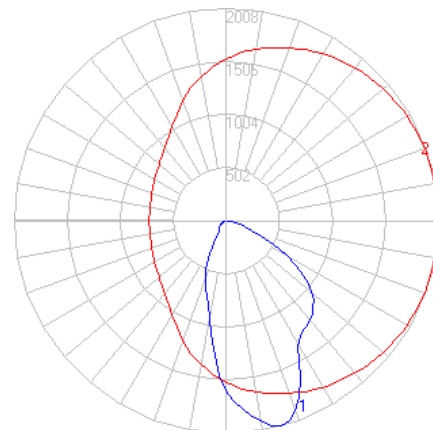
Grid Spacing: 5 ft.

In the interest of product improvement, BEGA reserves the right to make technical changes without notice.

BEGA

File: 24640K35_BEGA_IES.ies

TEST: BE_24640K4
 TEST LAB: BEGA
 DATE: 11/21/2024
 LUMINAIRE: 24 640K35
 LAMP: 23.2W LED



Characteristics

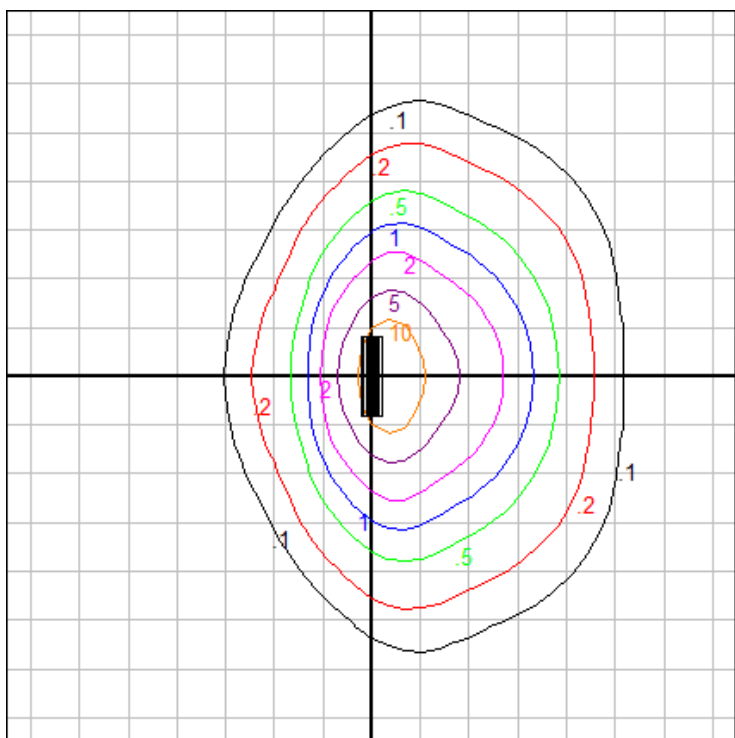
IES Classification	Type II
Longitudinal Classification	Very Short
Lumens Per Lamp	N.A. (absolute)
Total Lamp Lumens	N.A. (absolute)
Luminaire Lumens	2991
Downward Total Efficiency	N.A.
Total Luminaire Efficiency	N.A.
Luminaire Efficacy Rating (LER)	107
Total Luminaire Watts	28
Ballast Factor	1.00
Upward Waste Light Ratio	0.00
Max. Cd.	2008.482 (355H, 15V)
Max. Cd. (<90 Vert.)	2008.482 (355H, 15V)
Max. Cd. (At 90 Deg. Vert.)	.296 (0.0%Lum)
Max. Cd. (80 to <90 Deg. Vert.)	96.431 (3.2%Lum)
Cutoff Classification (deprecated)	N.A. (absolute)

Lum. Classification System (LCS)

LCS Zone	Lumens	%Lamp	%Lum
FL (0-30)	738.9	N.A.	24.7
FM (30-60)	1213.8	N.A.	40.6
FH (60-80)	293.1	N.A.	9.8
FVH(80-90)	12.8	N.A.	0.4
BL (0-30)	356.1	N.A.	11.9
BM (30-60)	306.9	N.A.	10.3
BH (60-80)	65.9	N.A.	2.2
BVH(80-90)	3.8	N.A.	0.1
UL (90-100)	< 0.05	N.A.	0.0
UH (100-180)	0.0	N.A.	0.0
Total	2991.3	N.A.	100.0

BUG Rating B1-U0*-G1

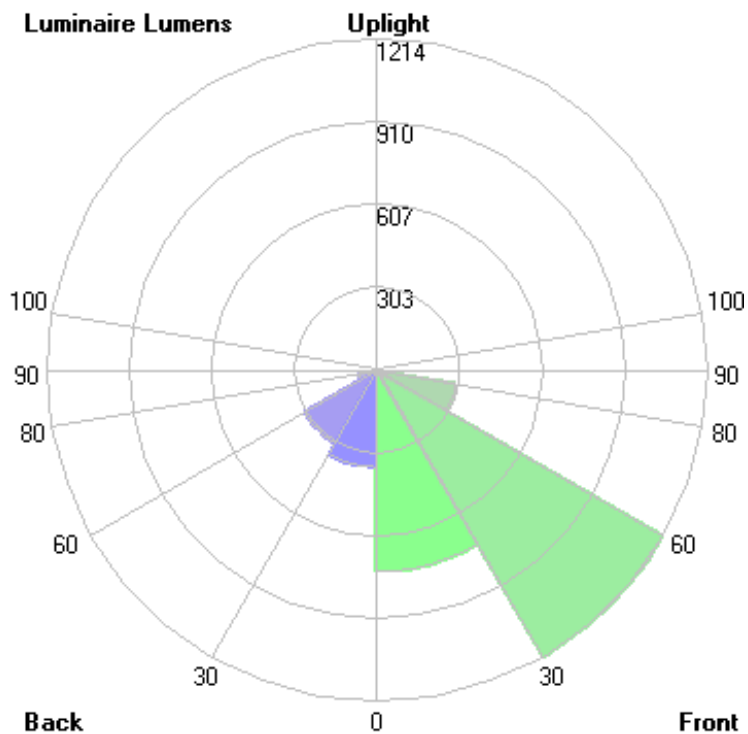
*Fixture has measured rating of U1 due to testing above 90 degrees and stray light from reflection off of the fixture body. Upon visual inspection of luminaire, it has a flat lens and opaque sides, there is no significant uplight (<0.5%), and it has therefore been assigned a value of U0 when installed in a downward orientation. Consult factory for more information.



Mounting Height: 10 ft.

Grid Spacing: 5 ft.

Luminaire Lumens

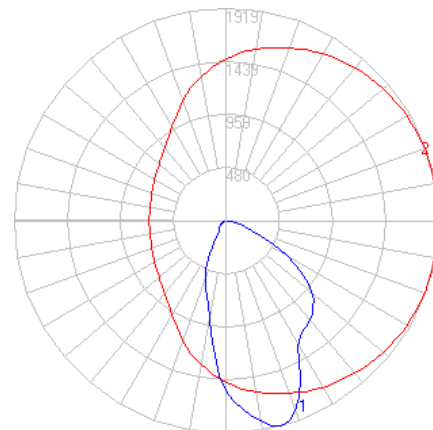


In the interest of product improvement, BEGA reserves the right to make technical changes without notice.

BEGA

File: 24640K27_BEGA_IES.ies

TEST: BE_24640K4
 TEST LAB: BEGA
 DATE: 11/21/2024
 LUMINAIRE: 24 640K27
 LAMP: 23.2W LED



Characteristics

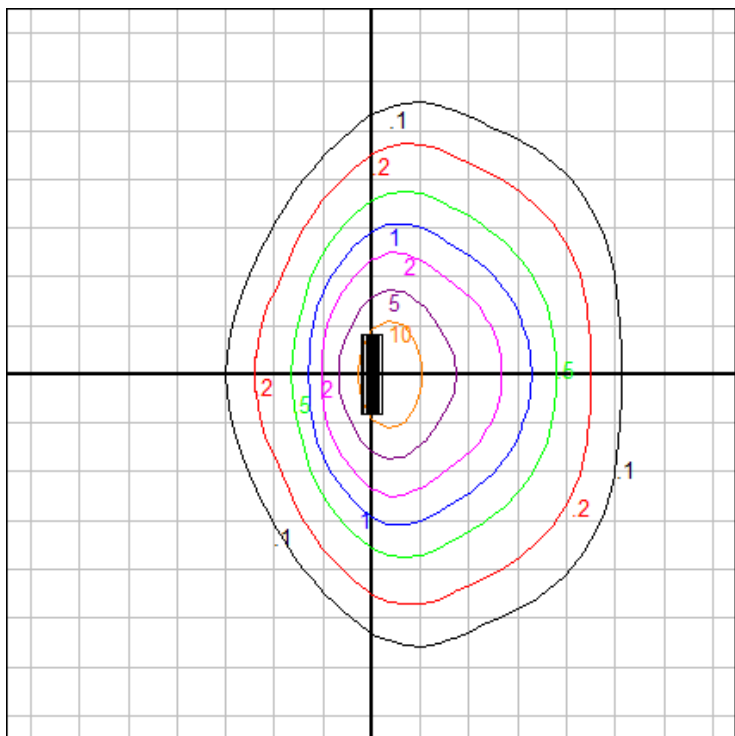
IES Classification	Type II
Longitudinal Classification	Very Short
Lumens Per Lamp	N.A. (absolute)
Total Lamp Lumens	N.A. (absolute)
Luminaire Lumens	2858
Downward Total Efficiency	N.A.
Total Luminaire Efficiency	N.A.
Luminaire Efficacy Rating (LER)	102
Total Luminaire Watts	28
Ballast Factor	1.00
Upward Waste Light Ratio	0.00
Max. Cd.	1918.854 (355H, 15V)
Max. Cd. (<90 Vert.)	1918.854 (355H, 15V)
Max. Cd. (At 90 Deg. Vert.)	.283 (0.0%Lum)
Max. Cd. (80 to <90 Deg. Vert.)	92.128 (3.2%Lum)
Cutoff Classification (deprecated)	N.A. (absolute)

Lum. Classification System (LCS)

LCS Zone	Lumens	%Lamp	%Lum
FL (0-30)	705.9	N.A.	24.7
FM (30-60)	1159.6	N.A.	40.6
FH (60-80)	280.0	N.A.	9.8
FVH (80-90)	12.2	N.A.	0.4
BL (0-30)	340.2	N.A.	11.9
BM (30-60)	293.2	N.A.	10.3
BH (60-80)	62.9	N.A.	2.2
BVH (80-90)	3.6	N.A.	0.1
UL (90-100)	< 0.05	N.A.	0.0
UH (100-180)	0.0	N.A.	0.0
Total	2857.6	N.A.	100.0

BUG Rating B1-U0*-G1

*Fixture has measured rating of U1 due to testing above 90 degrees and stray light from reflection off of the fixture body. Upon visual inspection of luminaire, it has a flat lens and opaque sides, there is no significant uplight (<0.5%), and it has therefore been assigned a value of U0 when installed in a downward orientation. Consult factory for more information.

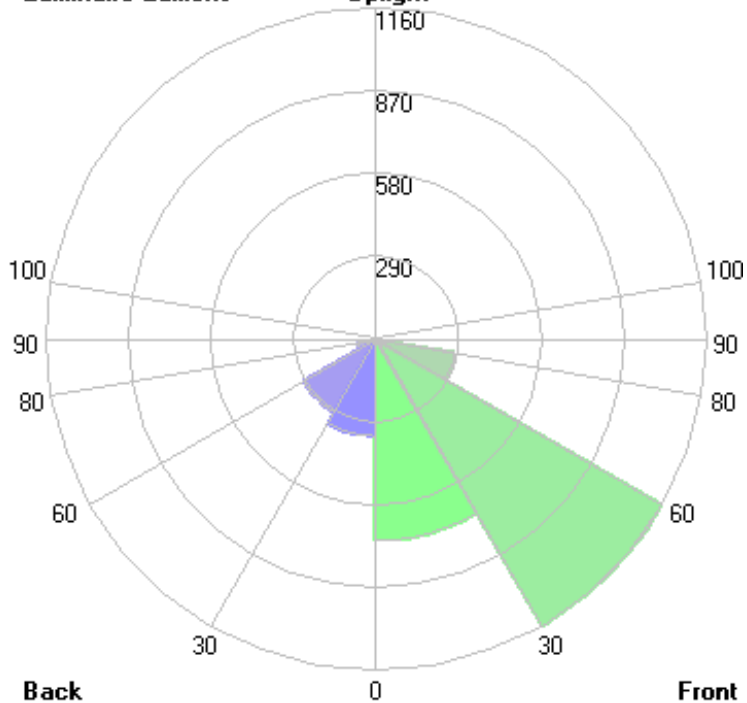


Mounting Height: 10 ft.

Grid Spacing: 5 ft.

Luminaire Lumens

Uplight



Back

0

Front

In the interest of product improvement, BEGA reserves the right to make technical changes without notice.

BEGA 1000 Bega Way, Carpinteria, CA 93013 (805)684-0533 Fax (805)566-9474 www.bega-us.com © Copyright BEGA-US 2026

5/18/2026