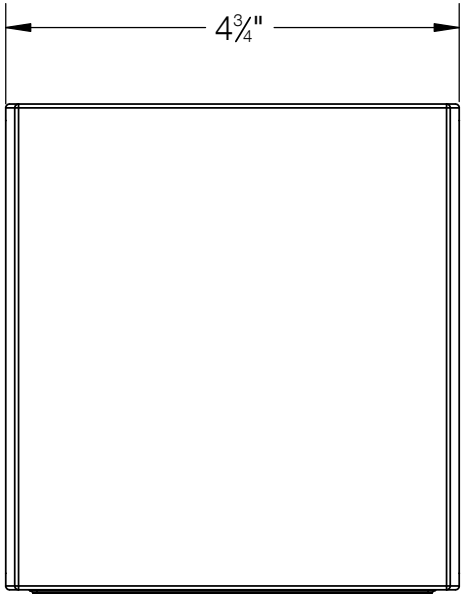
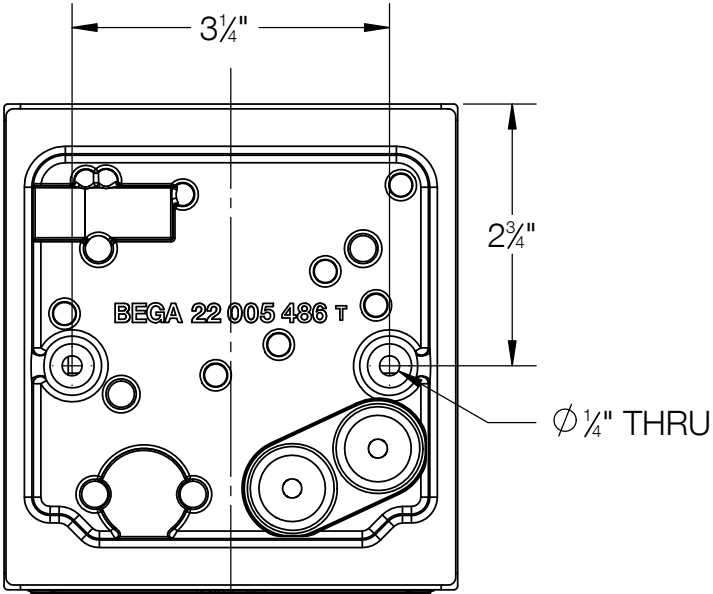


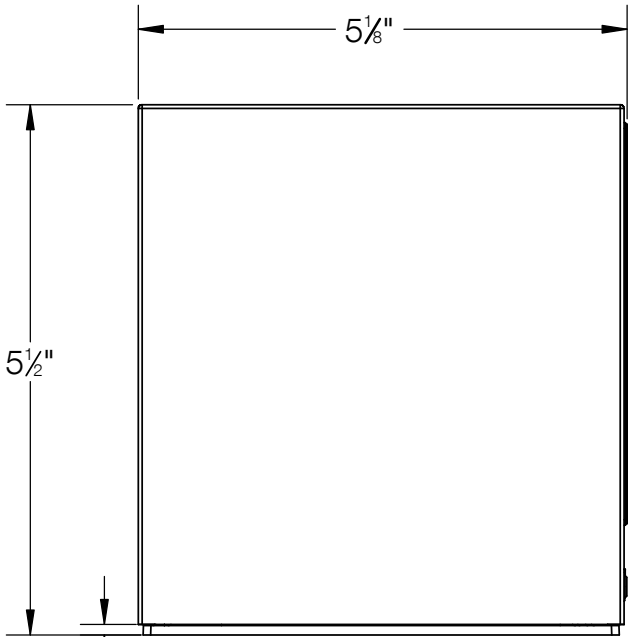
REV	CHANGED BY	DESCRIPTION	DATE



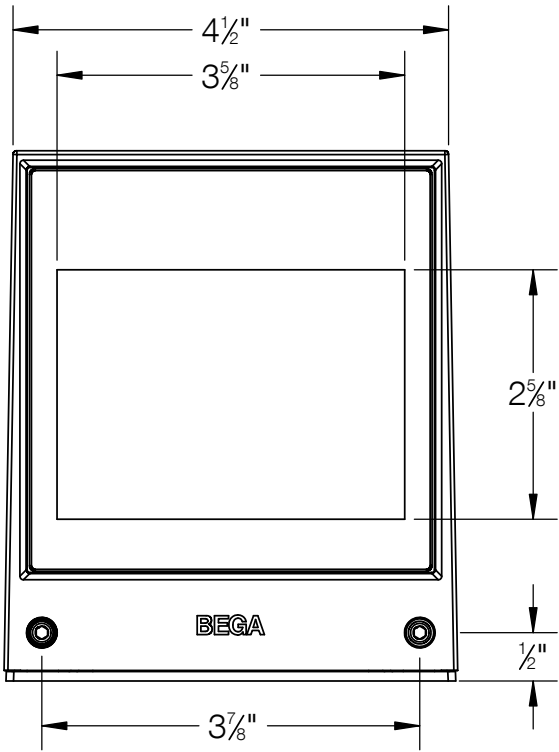
FRONT VIEW



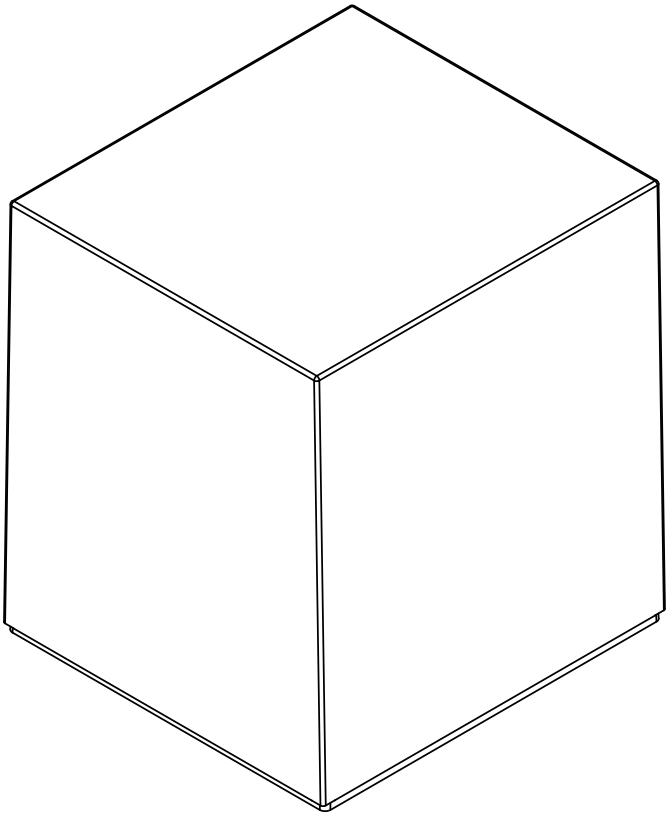
BACK (WALL SIDE) VIEW



SIDE VIEW



UNDERSIDE



ISOMETRIC VIEW

NOTE:
MOUNTING KIT #61 INCLUDED

BEGA

1000 BEGA Way, Carpinteria, California 93013

P (805) 684-0533 - www.bega-us.com

APPROVED: _____ DATE: _____

TYPE: _____

DESCRIPTION:

WALL WASHER - LIGHT EMISSION ON ONE SIDE

PROPRIETARY AND CONFIDENTIAL

THE INFORMATION CONTAINED IN THIS DRAWING IS THE SOLE PROPERTY OF BEGA NORTH AMERICA, INC.

ANY REPRODUCTION IN PART OR AS A WHOLE WITHOUT THE WRITTEN PERMISSION OF BEGA NORTH AMERICA, INC. IS PROHIBITED.

SIZE

B

PART NO.

24718

REV

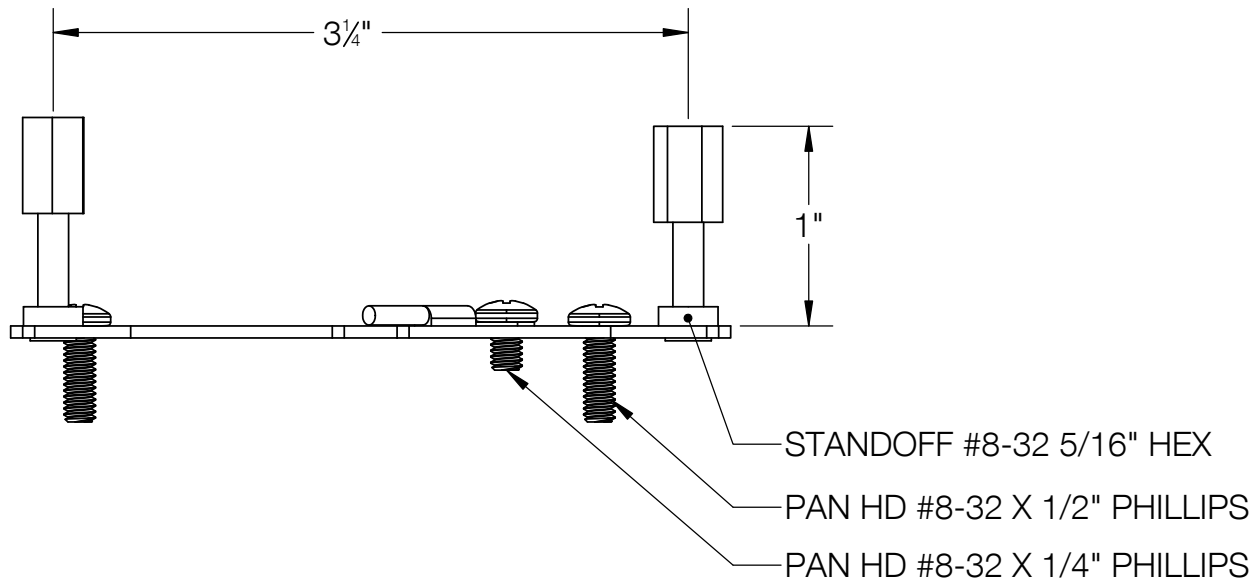
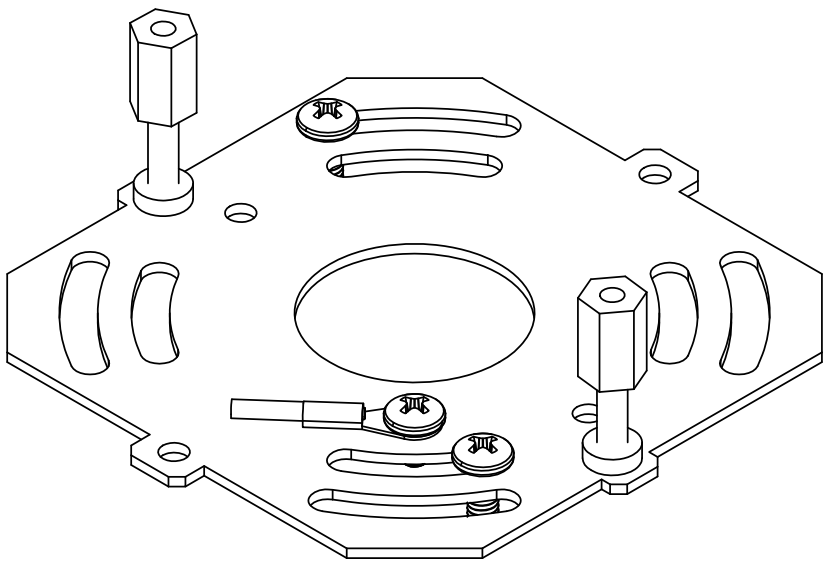
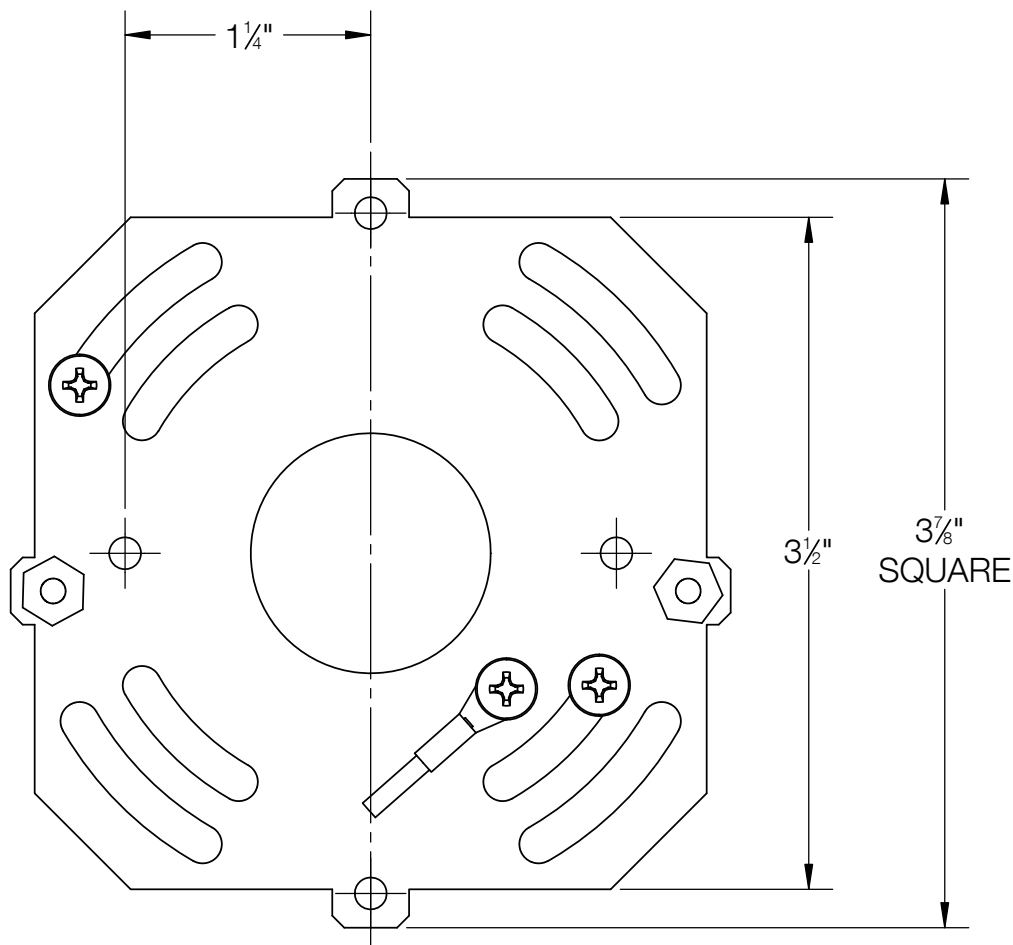
-

NOT TO SCALE

3/25/2024

SHEET 1 OF 2

REV	CHANGED BY	DESCRIPTION	DATE



BEGA

1000 BEGA Way, Carpinteria, California 93013

P (805) 684-0533 - www.bega-us.com

APPROVED: _____ DATE: _____

TYPE: _____

DESCRIPTION:
MOUNTING KIT

PROPRIETARY AND CONFIDENTIAL

THE INFORMATION CONTAINED IN THIS DRAWING IS THE SOLE PROPERTY
OF BEGA NORTH AMERICA, INC.
ANY REPRODUCTION IN PART OR AS A WHOLE WITHOUT THE WRITTEN
PERMISSION OF BEGA NORTH AMERICA, INC. IS PROHIBITED.

SIZE

B

PART NO.

KIT #61

REV

-

NOT TO SCALE

3/25/2024

SHEET 2 OF 2