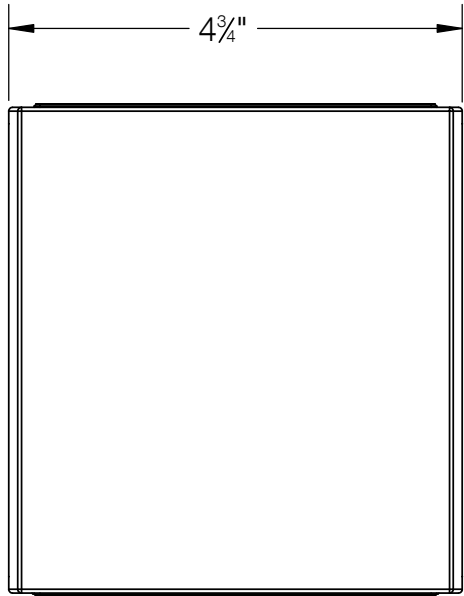
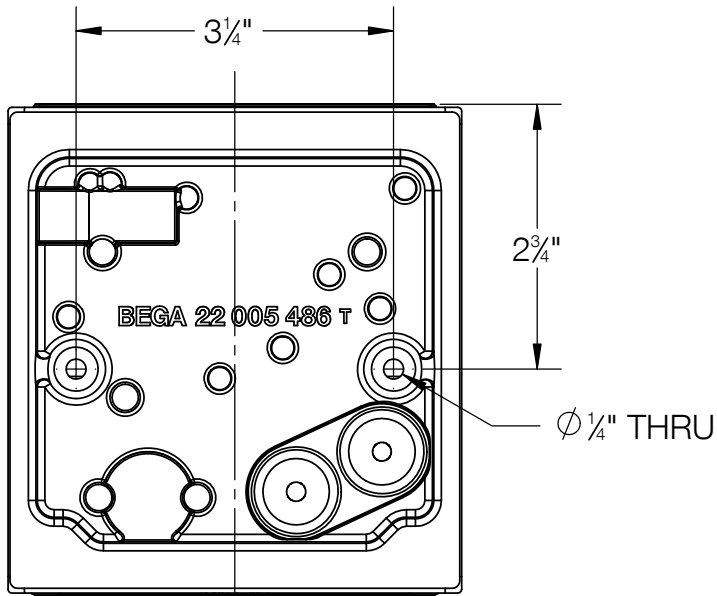


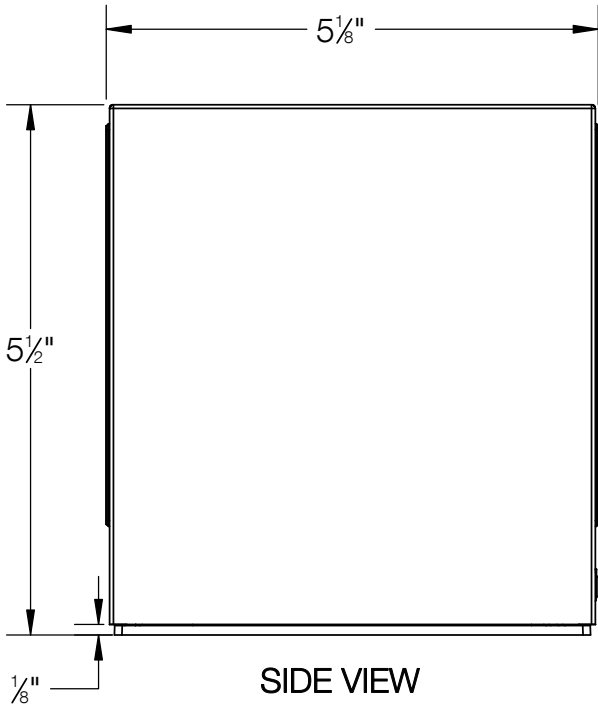
REV	CHANGED BY	DESCRIPTION	DATE



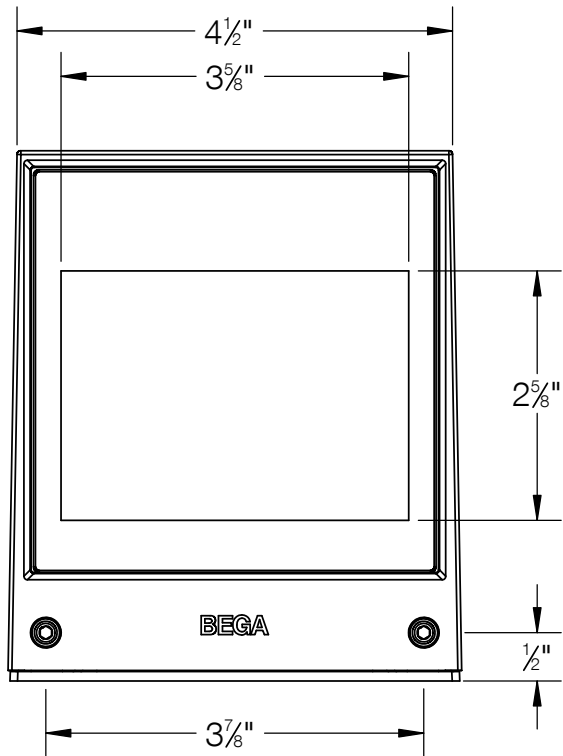
FRONT VIEW



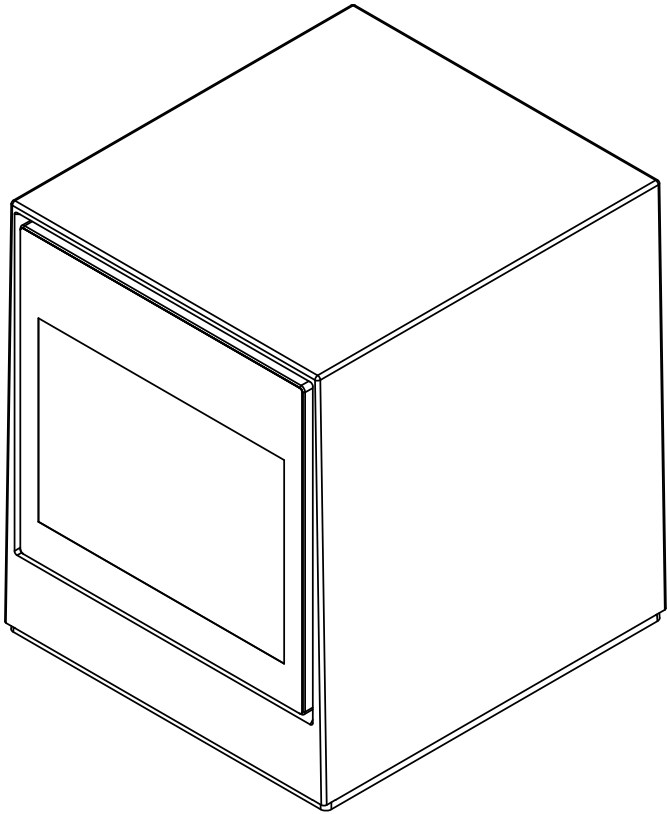
BACK (WALL SIDE) VIEW



SIDE VIEW



UNDERSIDE



ISOMETRIC VIEW

NOTE:
MOUNTING KIT #61 INCLUDED

BEGA

1000 BEGA Way, Carpinteria, California 93013 P (805) 684-0533 - www.bega-us.com

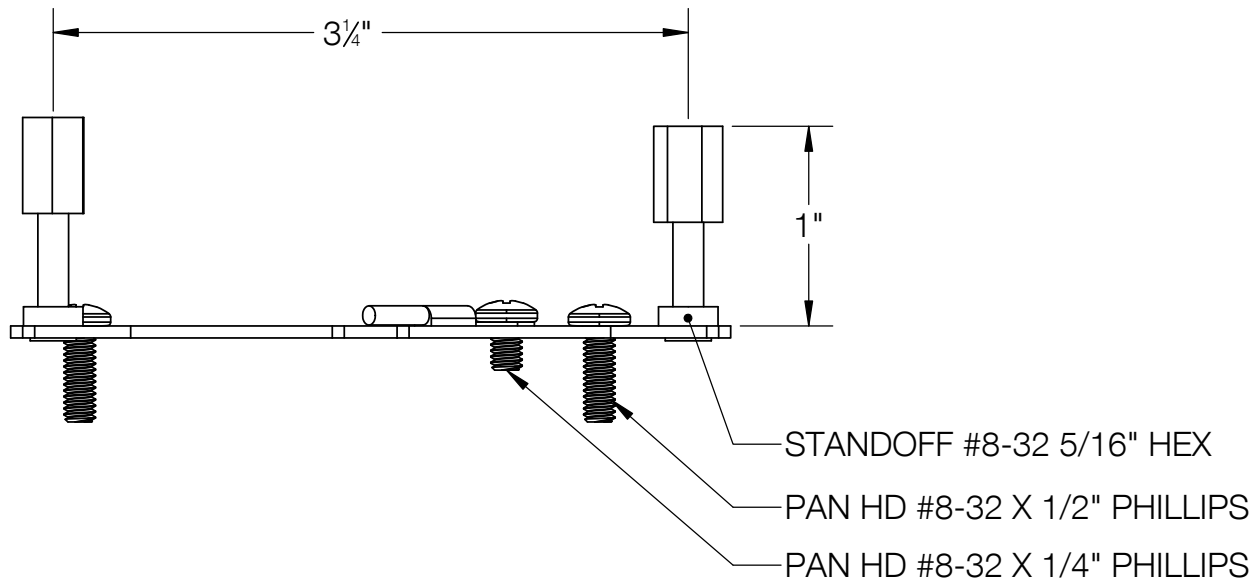
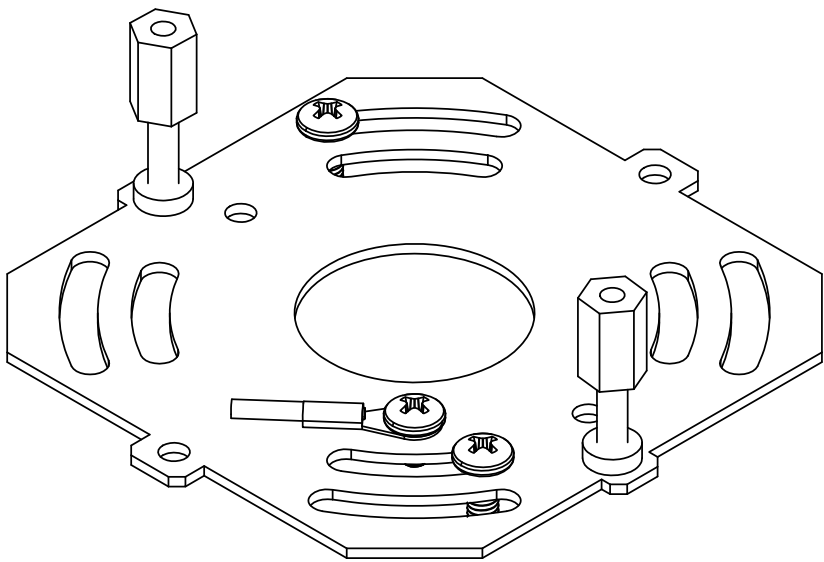
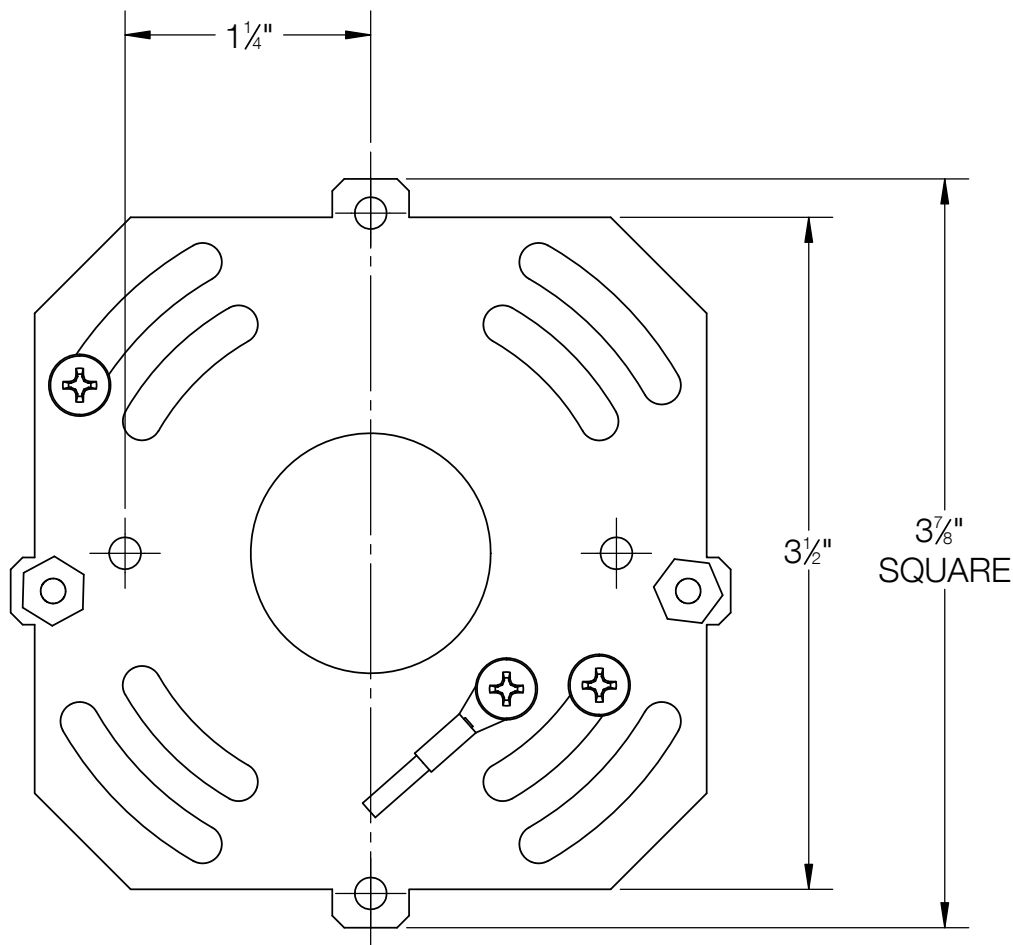
APPROVED: _____ DATE: _____
TYPE: _____

DESCRIPTION:
WALL WASHER - LIGHT EMISSION ON TWO SIDES

PROPRIETARY AND CONFIDENTIAL
THE INFORMATION CONTAINED IN THIS DRAWING IS THE SOLE PROPERTY
OF BEGA NORTH AMERICA, INC.
ANY REPRODUCTION IN PART OR AS A WHOLE WITHOUT THE WRITTEN
PERMISSION OF BEGA NORTH AMERICA, INC. IS PROHIBITED.

SIZE	PART NO.	REV
B	24719	-
NOT TO SCALE	4/1/2024	SHEET 1 OF 2

REV	CHANGED BY	DESCRIPTION	DATE



BEGA

1000 BEGA Way, Carpinteria, California 93013

P (805) 684-0533 - www.bega-us.com

APPROVED: _____ DATE: _____
TYPE: _____

DESCRIPTION:
MOUNTING KIT

PROPRIETARY AND CONFIDENTIAL
THE INFORMATION CONTAINED IN THIS DRAWING IS THE SOLE PROPERTY
OF BEGA NORTH AMERICA, INC.
ANY REPRODUCTION IN PART OR AS A WHOLE WITHOUT THE WRITTEN
PERMISSION OF BEGA NORTH AMERICA, INC. IS PROHIBITED.

SIZE B	PART NO. KIT #61	REV -
NOT TO SCALE	4/1/2024	SHEET 2 OF 2