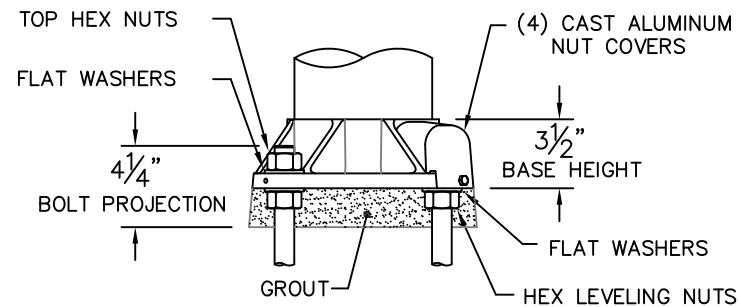


NOTE: NUT COVERS NOT SHOWN

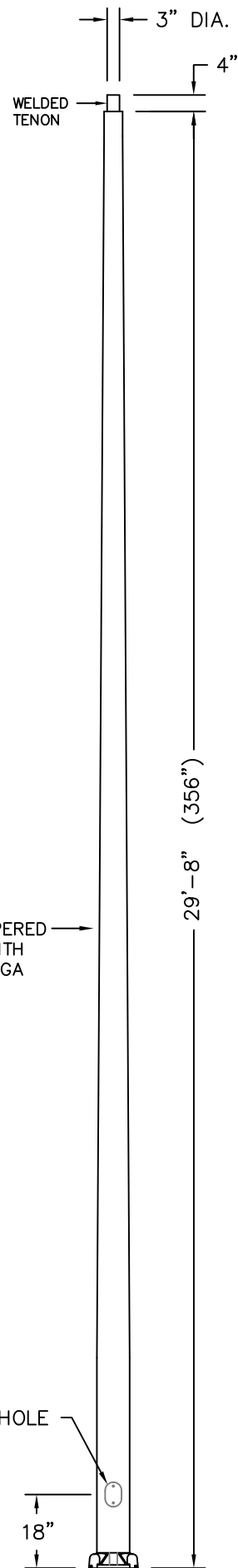


NOTE: ADEQUATE DRAINAGE MUST BE PROVIDED IN CONCRETE FOUNDATION OR GROUT.

BASE DETAIL

(4) 1" X 36" PARTIALLY GALVANIZED ANCHOR BOLTS & MTG. TEMPLATE SUPPLIED WITH POLE OR IN ADVANCE

4 1/2" TO 8" DIA. TAPERED ALUMINUM POLE WITH FIXED BASE BY BEGA



DISCLAIMER

BEGA-US WARRANTS THE SPECIFIC ANCHOR BOLTS & POLE COMBINATION ACCORDING TO THE PRODUCT NUMBER(S) AND DESCRIPTION(S). STRUCTURAL CHANGES TO THE POLE REQUESTED BY THE CUSTOMER INCLUDING CHANGES TO POLE LENGTH, MAY AFFECT THE COMPATIBILITY OF THE ANCHOR BOLTS AND CORRESPONDING POLES. BEGA-US IS NOT RESPONSIBLE FOR THE INCOMPATIBILITY OF THE ANCHOR BOLTS AND POLES RESULTING FROM SUCH STRUCTURAL CHANGES WITHOUT REVIEW BY THE BEGA-US ENGINEERING DEPT. THIS INCLUDES, BUT IS NOT LIMITED TO; ANY LABOR CHARGES, CHARGES FOR REPLACEMENT MATERIALS AND SHIPPING.

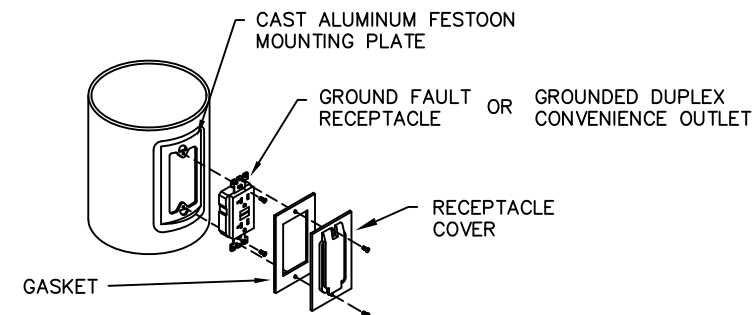
SEE LUMINAIRE SPECIFICATION SHEET FOR ADDITIONAL DETAILS

MAXIMUM EPA AT VARIOUS MPH, ALLOWS FOR 1.3 GUST FACTOR*						
POLE NO.	MPH –	70	80	90	100	110
2908FR	EPA –	17.0	12.1	9.1	7.0	5.6

*PER AASHTO 1994 WIND MAP

NOTE: DATA ABOVE ASSUMES GRADE LEVEL INSTALLATION AND A MAXIMUM LUMINAIRE WEIGHT OF 150 LBS.

POLE OPTIONS / ACCESSORIES:



NOTE:

GFI COVERS PROVIDED ARE INTENDED FOR PORTABLE TOOLS OR OTHER PORTABLE EQUIPMENT CONNECTED TO THE OUTLET WHEN ATTENDED. WET LOCATION LISTED WHEN COVER IS CLOSED.

RECEPTACLE OPTION

NOTE:

GFI RECEPTACLES MUST BE SPACED 18" MINIMUM VERTICALLY ON POLE FROM HAND HOLE OR APART. CONSULT FACTORY FOR ADDITIONAL ACCEPTABLE LOCATIONS

Catalog No.: 2908FR

Description: POLE - Aluminum Tapered w/Fixed Base

Drawn by: Bob Mc Date: 3/25/14 File Name: 2908FR

SCALE: NONE - DO NOT SCALE DRAWING

This print contains confidential information which is the property of BEGA/US. By accepting this information, the borrower agrees that it will not be used for any other purpose other than that which is was loaned.

BEGA

1000 Bega Way
Carpinteria, Ca. 93013
(805) 684-0533