

Application

Pillar luminaire with partially shielded light distribution. A combination of materials in perfect harmony with this classic luminaire shape.

Materials

Hand-blown three-ply opal glass
99.9% pure copper
Self-expanding sleeve anchors for pre-cast concrete

NRTL listed to North American Standards, suitable for wet locations
Protection class IP 65

Weight: 7.5 lbs.

Electrical

Operating voltage 120-277VAC
Minimum start temperature -30° C
Maximum ambient temperature 90° C
LED module wattage 3.8W
System wattage 10.0W
Controllability 0-10V dimmable
Color rendering index Ra > 80
Luminaire lumens 368lm
LED service life (L70) 60000 hrs

LED color temperature

4000K (K4)
3500K (K35)
3000K (K3)
2700K (K27)

BEGA can supply you with suitable LED replacement modules for up to 20 years after the purchase of LED luminaires - see website for details

Finish

Natural cast bronze and copper. Time and weather factors will create the natural patina of bronze and copper.

Type:

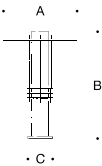
BEGA Product:

Project:

Modified:

Available options

DALI-2 Enabled for DALI control system



Cast bronze and copper pillar luminaire · Unshielded				
	LED	A	B	C
B31400	3.8W	13 ³ / ₄	18 ³ / ₈	5 ¹ / ₈

