

Application

Pillar luminaire with partially shielded light distribution. A combination of materials in perfect harmony with this classic luminaire shape.

Materials

Hand-blown three-ply opal glass  
99.9% pure copper  
Self-expanding sleeve anchors for pre-cast concrete  
**NRTL** listed to North American Standards, suitable for wet locations  
Protection class IP 65

**Weight:** 20.7 lbs.

Electrical

Operating voltage                    120, 240 or 277VAC  
Minimum start temperature       -30° C  
Maximum ambient temperature   90° C  
LED module wattage                22.0 W  
System wattage                      25.5 W  
Controllability                      0-10V dimmable  
Color rendering index              Ra > 80  
Luminaire lumens                    1342 lm  
LED service life (L70)              60000 hrs

LED color temperature

4000K (K4)  
3500K (K35)  
3000K (K3)  
2700K (K27)

**BEGA** can supply you with suitable LED replacement modules for up to 20 years after the purchase of LED luminaires - see website for details

Finish

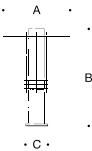
Natural cast bronze and copper. Time and weather factors will create the natural patina of bronze and copper.

Type:

BEGA Product:

Project:

Modified:



Cast bronze and copper pillar luminaire · Unshielded

	LED	A	B	C
B31437	22.0W	17 <sup>3</sup> / <sub>4</sub>	27 <sup>5</sup> / <sub>8</sub>	6 <sup>7</sup> / <sub>8</sub>

