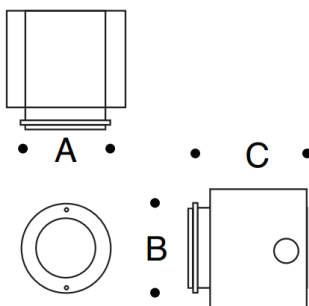


Tools Required:

Phillips medium screw driver
3 mm hex key
Standard medium slotted screwdriver



Dimensions

A: 3 1/8"

B: 4"



Protection Class: IP65

Weight: 0.4 lbs.

Notice to Installer for 33 200:

1. BEGA luminaires may be damaged if connected to conduit systems containing water - Article 300-5G of National Electric Code requires that "Conduits or raceways through which moisture may contact energized live parts shall be sealed or plugged at either or both ends".
2. Luminaire is Non-IC rated. Insulation must be at least 3" from luminaire.
3. Suitable for installation in hollow wall construction or poured concrete construction.
4. Back housing (BB2100LED) provided with (2) 7/8" holes (horizontal entry) for 1/2" trade size conduit.
NOTE: Internal components will not fit if conduit enters vertically.
5. Back housing must be installed so that the front face is flush with the finished wall.
6. Suitable for through wiring: max. of (4) No. 12 AWG conductors (plus ground) rated for 90°C.
7. Suitable for wall applications only. (No ceiling and in-grade applications).
8. LEDs are high-quality electronic components! Please avoid touching the light output opening of the LED directly during installation.

NOTE: Requires a 24V DC class 2 electronic power supply to operate intended LED wattage. (not included). DO NOT USE LINE VOLTAGE

BB2100LED - back housing installation in hollow (stud) wall construction:

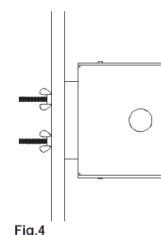
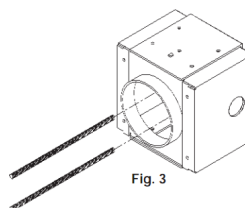
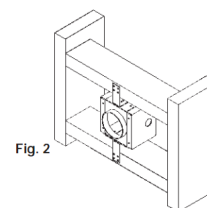
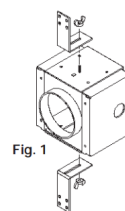
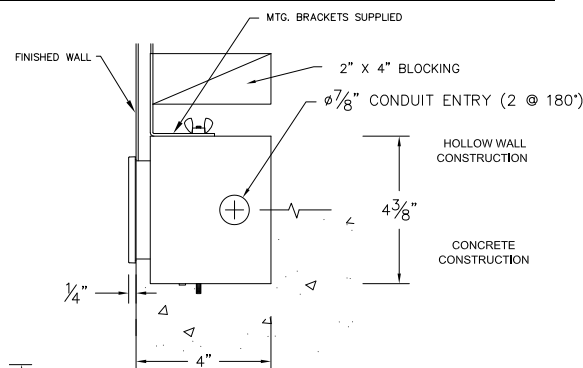
1. Install the (2) slotted mounting brackets provided as shown in Figure #1, using the (2) #6-32 wing nuts provided in the installation kit.
2. Adjust the brackets (by loosening the #6-32 wing nuts) so that the face of the back box will be flush to the finished wall surface after installation.
3. Secure the mounting brackets to wood or metal horizontal blocking as shown in Figure #2.
4. Connect conduit to back housing and pull wires for electrical connections to be made later.

BB2100LED - back housing installation in poured concrete construction:

1. Attach (2) #8-32 threaded rods into the pressed nuts located in the bottom of the fixture back box (Fig #3).
2. Attach the fixture back box to the concrete form using the wing nuts and washers provided in the installation kit (Fig #4).
3. Connect conduit to back housing and pull wires for electrical connections to be made later. Pour concrete. **IMPORTANT NOTE!!! DO NOT PUMP OR DROP CONCRETE DIRECTLY ON TOP OF THE BACK HOUSING.**
4. After concrete is poured, remove the #8-32 wing nuts from the threaded rod before removing the form.

33 200 - inner housing wiring and installation:

1. Undo faceplate screws and carefully remove trim ring and lens.
2. Connect the corresponding positive and negative wires from the inner housing to the remote driver.
3. Place a small bead of silicone between edge of housing and wall to provide a seal.
4. Install inner housing into back housing, and tighten the (2) M3 screws until secure.
5. Install faceplate casting and lens. Make sure that gasket and lens are seated properly.
6. Tighten the (4) M4 flathead screws evenly to secure.



Relamping/Maintenance

No relamping required.

Accessories

Please refer to the appropriate accessory installation sheet for further instruction when applicable.

Remote 25W LED Driver 19 580
Remote 50W LED Driver 19 591

Replacement Parts

Description	Part No
Faceplate	710813B
Glass	140515
Gasket	830887.1
LED (3000K)	74020

Lamp: 2.1W LED - 24V DC

Product Safety Warnings:

THIS PRODUCT MUST BE INSTALLED IN ACCORDANCE WITH THE APPLICABLE INSTALLATION CODE BY A PERSON FAMILIAR WITH THE CONSTRUCTION AND OPERATION OF THE PRODUCT AND THE HAZARDS INVOLVED. SUITABLE FOR WET LOCATIONS.

MIN 90° SUPPLY CONDUCTORS.

CE PRODUIT DOIT ÊTRE INSTALLÉ SELON LE CODE D'INSTALLATION PERTINENT, PAR UNE PERSONNE QUI CONNAÎT BIEN LE PRODUIT ET SON FONCTIONNEMENT AINSI QUE LES RISQUES INHÉRENTS.

CONVIENT AUX EMPLACEMENTS MOUILLÉS.

LES FILS D'ALIMENTATION 90°C MIN.
