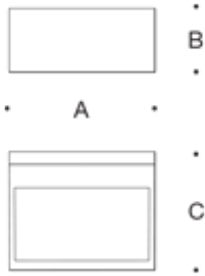
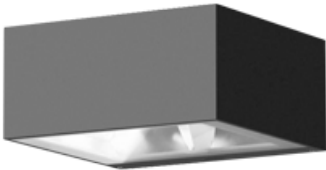


Tools Required:

- 3mm hex key
- Phillips head screw driver medium



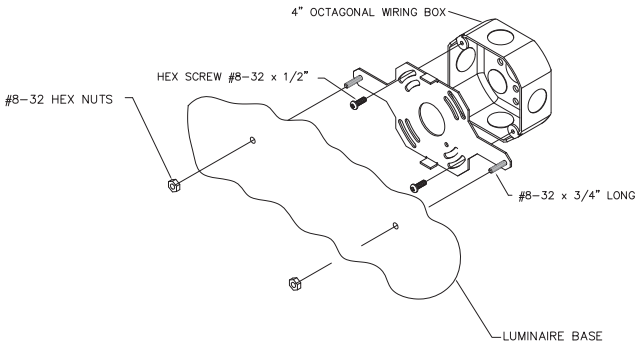
- Dimensions**
- A: 12-1/2 "
 - B: 5 "
 - C: 8-5/8 "



Protection Class: IP65
Weight: 11.0 lbs

- Notice to Installer for 33 378:**
- See page 2 for specific product safety warnings.
 - For wall applications only.
 - Mounts directly to wall to standard recessed 4" wiring box (by others) using mounting kit supplied.
 - In conformance with UL Standard 1598, a silicone based sealant must be used between luminaire and supporting wall.
 - LEDs are high-quality electronic components! Please avoid touching the light output opening of the LED directly during installation.

Figure 1 - Generic Image



- 33 378 - installation:**
- Loosen (2) 3mm housing hex screws and remove outer casting with lens attached.
 - Feed luminaire wires through luminaire box.
 - Connect luminaire wires (provided) to site supply wires:
CONNECT NEUTRAL SUPPLY WIRE TO WHITE FIXTURE LEAD
CONNECT MAIN VOLTAGE (LINE) SUPPLY WIRE TO BLACK FIXTURE LEAD
CONNECT GREEN SUPPLY WIRE TO GREEN FIXTURE LEAD
Dimming (if applicable):
DIMMING CONTROL WIRE (+) TO POSITIVE DRIVER DIM CONTROL WIRE
DIMMING CONTROL WIRE (-) TO NEGATIVE DRIVER DIM CONTROL WIRE
 - Attach mounting kit (provided) to wiring box using outlet box screws (by others).
 - Place a small bead of silicone around the back side of the mounting plate that will come in contact with the finished surface (exterior applications only).
 - Secure base to wall using hardware.
 - Position outer casting back onto luminaire base and tighten (2) 3mm housing hex screws to secure.

Relamping/Maintenance
No relamping required.

Accessories
Please refer to the appropriate accessory installation sheet for further instruction when applicable.

Replacement Parts Description	Part No
Diffuser	141091
LED Driver (120-277V)	76004-03
LED Module (3000K)	(x2) LED-0282/830
LED Module (4000K)	(x2) LED-0282/840

Lamp: 26.6W LED Module

In the interest of product improvement, BEGA reserves the right to make technical changes without notice.

Product Safety Warnings:

THIS PRODUCT MUST BE INSTALLED IN ACCORDANCE WITH THE APPLICABLE INSTALLATION CODE BY A PERSON FAMILIAR WITH THE CONSTRUCTION AND OPERATION OF THE PRODUCT AND THE HAZARDS INVOLVED. SUITABLE FOR WET LOCATIONS.

MIN 90°C SUPPLY CONDUCTORS.

CE PRODUIT DOIT ÊTRE INSTALLÉ SELON LE CODE D'INSTALLATION PERTINENT, PAR UNE PERSONNE QUI CONNAÎT BIEN LE PRODUIT ET SON FONCTIONNEMENT AINSI QUE LES RISQUES INHÉRENTS. CONVIENT AUX EMPLACEMENTS MOUILLÉS.

LES FILS D'ALIMENTATION 90°C MIN.
