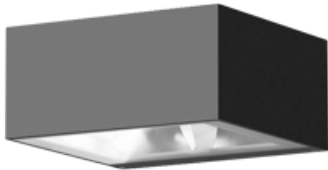


Tools Required:

- 3mm hex key
- Phillips head screw driver medium



- Dimensions**
- A: 9 7/8 "
- B: 6 1/4 "
- C: 7 7/8 "



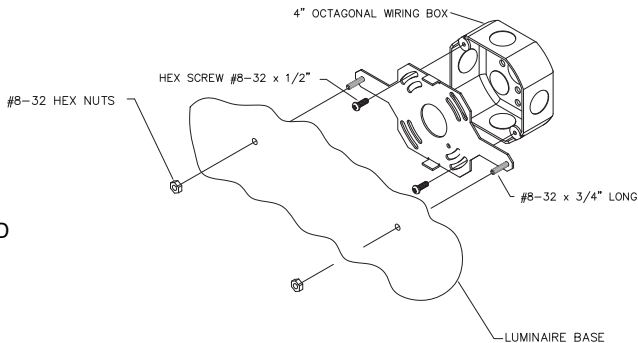
Protection Class: IP65

Weight: 11.0 lbs

- Notice to Installer for 33 395:**
- See page 2 for specific product safety warnings.
  - For wall applications only.
  - In conformance with UL Standard 1598, a silicone based sealant must be used between luminaire and supporting wall.
  - LEDs are high-quality electronic components! Please avoid touching the light output opening of the LED directly during installation.

Figure 1 - Generic Image

- 33 395 - installation:**
- Loosen (2) 3mm housing hex screws and remove outer casting with lens attached.
  - Feed luminaire wires through luminaire box.
  - Connect luminaire wires (provided) to site supply wires:  
CONNECT NEUTRAL SUPPLY WIRE TO WHITE FIXTURE LEAD  
CONNECT MAIN VOLTAGE (LINE) SUPPLY WIRE TO BLACK FIXTURE LEAD  
CONNECT GREEN SUPPLY WIRE TO GREEN FIXTURE LEAD  
Dimming (if applicable):  
DIMMING CONTROL WIRE (+) TO POSITIVE DRIVER DIM CONTROL WIRE  
DIMMING CONTROL WIRE (-) TO NEGATIVE DRIVER DIM CONTROL WIRE
  - Attach mounting plate (provided) to wiring box using outlet box screws (by others).
  - Place a small bead of silicone around the back side of the mounting plate that will come in contact with the finished surface (exterior applications only).
  - Secure base to wall using hardware (minimum thread size 8-32).
  - Position outer casting back onto luminaire base and tighten (2) 3mm housing hex screws to secure.



**Relamping/Maintenance**

No relamping required.

**Accessories**

Please refer to the appropriate accessory installation sheet for further instruction when applicable.

Replacement Parts	
Description	Part No
Driver (120-277V)	(x2) 75983-02
LED Module (3000K)	(x2) LED-0313/930
LED Module (4000K)	(x2) LED-0313/940

Lamp: 35.8W LED Module

In the interest of product improvement, BEGA reserves the right to make technical changes without notice.

**Product Safety Warnings:**

**THIS PRODUCT MUST BE INSTALLED IN ACCORDANCE WITH THE APPLICABLE INSTALLATION CODE BY A PERSON FAMILIAR WITH THE CONSTRUCTION AND OPERATION OF THE PRODUCT AND THE HAZARDS INVOLVED. SUITABLE FOR WET LOCATIONS.**

**MIN 90°C SUPPLY CONDUCTORS.**

**CE PRODUIT DOIT ÊTRE INSTALLÉ SELON LE CODE D'INSTALLATION PERTINENT, PAR UNE PERSONNE QUI CONNAÎT BIEN LE PRODUIT ET SON FONCTIONNEMENT AINSI QUE LES RISQUES INHÉRENTS. CONVIENT AUX EMPLACEMENTS MOUILLÉS.**

**LES FILS D'ALIMENTATION 90°C MIN.**

---