

Application

Recessed wall luminaires that can be used as floodlights. This family is designed for interior or exterior installation in walls and other vertical and horizontal surfaces.

Materials

- Clear safety glass
- Corrosion-resistant 304 grade stainless steel
- High temperature silicone gasket
- Pure anodized aluminum reflector surface

NRTL listed to North American Standards, suitable for wet locations  
Protection class IP 68

Weight: 1.5 lbs.

Electrical

LED module wattage	3.4 W
System wattage	5.0 W
Color rendering index	Ra > 80
Luminaire lumens	266 lm
LED service life (L70)	60000 hrs

LED color temperature

- 4000K (K4)
- 3500K (K35)
- 3000K (K3)
- 2700K (K27)

BEGA can supply you with suitable LED replacement modules for up to 20 years after the purchase of LED luminaires - see website for details

Finish

#4 brushed stainless steel. Custom colors are not available.

Type:

BEGA Product:

Project:

Modified:

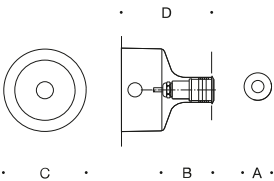
Available accessories

- B19580 Remote driver box · Static white
- B19591 Remote driver box · Static white

See individual accessory spec sheet for details.

Included (available for pre-shipment)

- BB3827LED Installation housing



Recessed wall luminaire · Symmetric · 24V DC					
	LED	A	B	C	D
B33832	3,4 W	3	3	6	4

