

Application

Recessed wall luminaires that can be used as location luminaires. This family is designed for interior or exterior installation in walls and other vertical and horizontal surfaces.

Materials

Clear safety glass with white ceramic coating  
Corrosion-resistant 304 grade stainless steel  
High temperature silicone gasket  
Pure anodized aluminum reflector surface

NRTL listed to North American Standards, suitable for wet locations  
Protection class IP 68

Weight: 0.66lbs.

Electrical

LED module wattage	0.2W
System wattage	0.35W
Color rendering index	Ra > 80
Luminaire lumens	5lm
LED service life (L70)	60000hrs

LED color temperature

4000K (K4)  
3500K (K35)  
3000K (K3)  
2700K (K27)

BEGA can supply you with suitable LED replacement modules for up to 20 years after the purchase of LED luminaires - see website for details

Finish

#4 brushed stainless steel. Custom colors are not available.

Type:

BEGA Product:

Project:

Modified:

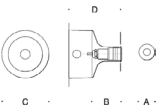
Available accessories

B19580	Remote driver box · Static white
B19591	Remote driver box · Static white

See individual accessory spec sheet for details.

Included (available for pre-shipment)

BB8688LED Installation housing



Recessed wall luminaire · Location luminaire · 24V DC					
	LED	A	B	C	D
B33880	0.2W	1 <sup>3</sup> / <sub>8</sub>	2 <sup>3</sup> / <sub>8</sub>	4 <sup>3</sup> / <sub>4</sub>	4

