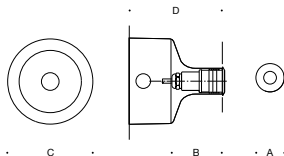


**Tools Required:**

Adjustable open-ended wrench



**Dimensions**

- A:** 2"
- B:** 3"
- C:** 4-3/4"
- D:** 4"



**Protection Class:** IP68

**Weight:** 1.3 lb.

**Notice to Installer for 33 881:**

- See page 2 for specific product safety warnings.
- BEGA luminaires may be damaged if connected to conduit systems containing water - Article 300-5G of National Electric Code requires that "Conduits or raceways through which moisture may contact energized live parts shall be sealed or plugged at either or both ends".**
- Luminaire is Non-IC rated. Insulation must be at least 3" from luminaire.
- Suitable for installation in hollow wall construction or poured concrete construction.
- Back housing provided with (2) 7/8" holes (horizontal entry) for 1/2" trade size conduit.
- Back housing must be installed so that the front face is flush with the finished surface.
- Suitable for through wiring: max. of (4) No. 12 AWG conductors rated for 90°C.
- Requires a 24V DC class 2 electronic power supply to operate intended LED wattage. **(not included).**

**33 881 - back housing installation in hollow (stud) wall construction:**

- Install the (2) stud framing mounting brackets provided as shown in Fig.1.
- Set the cover plate gasket on the cover plate and attach to the backbox.
- Attach the assembly by nailing or screwing to blocking (by others) as shown in Fig.2. The front of the backbox should measure 1/2" out from the face of the blocking.
- Pull the wires for electrical connections to be made later. The installing contractor is responsible for supplying the correct wire to account for the voltage drop from the 120-277/24v Class 2 transformer.

**NOTE:** The neck of the backbox is designed to go thru a 1 3/16"  $\phi$  (30 mm  $\phi$ ) hole in the finished wall. Take care not to make the hole any larger because the flange of the fixture is only 1 15/32"  $\phi$  (37 mm  $\phi$ ).

**33 881 - back housing installation in poured concrete construction:**

- Attach the concrete mount strap to the cover plate as shown in Fig.3.
- Set the cover plate gasket on the cover plate and attach to the backbox.
- Attach the assembly to structural rebar in such a way as to pull the assembly against the back of the concrete forms to help hold it in place while the concrete is being poured, as shown in Fig.4.

**IMPORTANT NOTE: DO NOT PUMP OR DROP CONCRETE DIRECTLY ON TOP OF THE ASSEMBLY. USE CARE IN PLACING THE CONCRETE AROUND THE ASSEMBLY TO AVOID DISLODGING IT FROM THE FORM.**

**33 881 - inner housing wiring and installation:**

- Pull the wires thru the front of the backbox. Connect the positive wire to the positive fixture wire. Connect the negative wire to the negative fixture wire.
- Push the connections back thru the throat and into the backbox.
- Push the fixture into the throat and into place. Take care to get the BEGA logo as straight as possible because you cannot rotate the fixture once it is in place. You must pull the fixture out to rotate it.

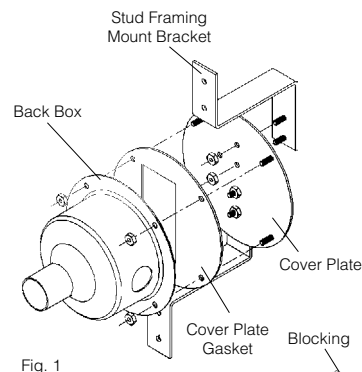


Fig. 1

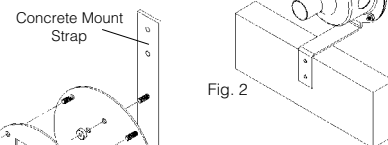


Fig. 2

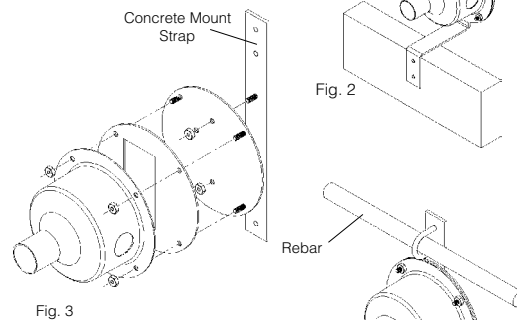


Fig. 3

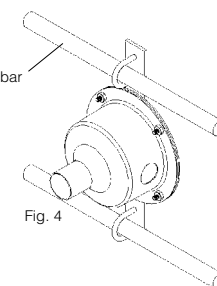


Fig. 4

**Relamping/Maintenance**

No relamping required.

**Accessories**

Please refer to the appropriate accessory installation sheet for further instruction when applicable.

- Remote 25W LED driver and box 19 580
- Remote 50W LED dimming driver and box 19 591

**Replacement Parts**

Description Part No

Consult Factory

**Lamp:** 0.2W LED, 24V DC

In the interest of product improvement, BEGA reserves the right to make technical changes without notice.

## Product Safety Warnings:

**THIS PRODUCT MUST BE INSTALLED IN ACCORDANCE WITH THE APPLICABLE INSTALLATION CODE BY A PERSON FAMILIAR WITH THE CONSTRUCTION AND OPERATION OF THE PRODUCT AND THE HAZARDS INVOLVED. SUITABLE FOR WET LOCATIONS.**

**MIN 90° SUPPLY CONDUCTORS.**

**CE PRODUIT DOIT ÊTRE INSTALLÉ SELON LE CODE D'INSTALLATION PERTINENT, PAR UNE PERSONNE QUI CONNAÎT BIEN LE PRODUIT ET SON FONCTIONNEMENT AINSI QUE LES RISQUES INHÉRENTS.**

**CONVIENT AUX EMPLACEMENTS MOUILLÉS.**

**LES FILS D'ALIMENTATION 90°C MIN.**

---