

Tools Required:

- Medium flathead screwdriver
- Medium phillips-head screwdriver
- T10 torx screwdriver

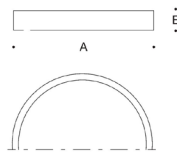
Dimensions

- A:** 53"
B: 7-7/8"



Overview:

- LED Watts: 121.6 W
 System Watts: 143.0 W
 Controllability: 0-10 V dimmable down to 0.1%
 Weight: 126.8 lbs.



Notice to Installer:

1. Surface ceiling applications only.
2. Mounts directly to ceiling surface over standard recessed 4" octagonal wiring box (by others).
3. LEDs are high-quality electronic components! Please avoid touching LED directly during installation.
4. **IMPORTANT:** The installation surface must have an adequate load-bearing capacity.

Installation:

1. Remove mounting plate from luminaire housing by turning the mounting plate counterclockwise.
2. Route wires to wiring box and make supply and luminaire wiring connections inside wiring box:
 MAIN VOLTAGE SUPPLY WIRE TO BLACK LUMINAIRE WIRE
 NEUTRAL (COMMON) SUPPLY WIRE TO WHITE LUMINAIRE WIRE
 GREEN GROUND WIRE TO GREEN LUMINAIRE WIRE
 Dimming (if applicable):
 DIMMING CONTROL WIRE (+) TO POSITIVE PURPLE DRIVER DIM CONTROL WIRE
 DIMMING CONTROL WIRE (-) TO NEGATIVE GREY DRIVER DIM CONTROL WIRE
3. Install mounting plate onto ceiling surface by tightening 6 screws
4. Attach steel retention wires coming from luminaire housing to mounting plate outrigger arms [Figure 1]
5. Use a suitable tool to bend the lateral metal lugs toward the ceiling to ensure that steel retention wires cannot become disconnected. **NOTE: ensure these wires are not pinched when fastening fixture to mounting plate**
6. Place luminaire housing onto mounting plate by connecting housing slots to outrigger arms and turning luminaire housing counterclockwise to secure
7. Secure single set screw on the side of the housing to keep fixture in place with T10 screwdriver [Figure 2]
8. Attach guard to mounting plate by aligning with the 4 threaded pins and screw it tight through the gap with the enclosed cap nuts [Figure 3]

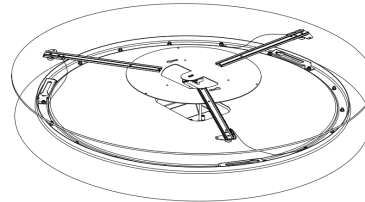
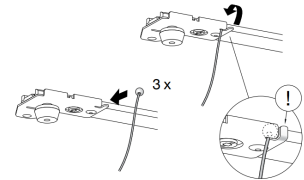


Figure 1



Note: generic image

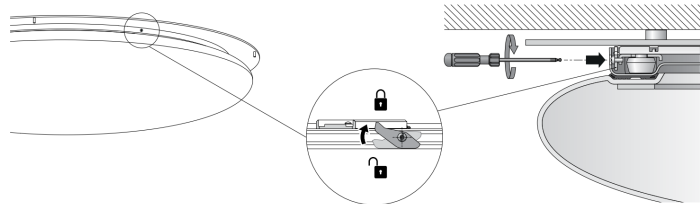


Figure 2

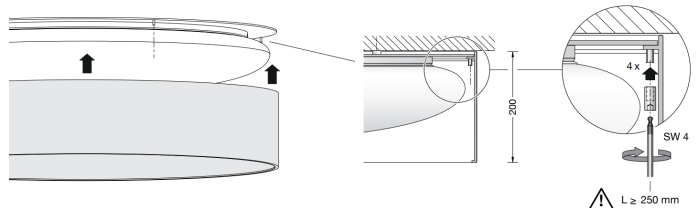


Figure 3

Accessories

Please refer to the appropriate accessory installation sheet for further instruction when applicable.

Maintenance:

Clean regularly with solvent-free cleaner removing dirt and debris. Do not use high pressure cleaners.

Replacement Parts

See label inside of fixture for LED replacement part number.

Consult factory for all other replacement components.

Product Safety Warnings:

THIS PRODUCT MUST BE INSTALLED IN ACCORDANCE WITH THE APPLICABLE INSTALLATION CODE BY A PERSON FAMILIAR WITH THE CONSTRUCTION AND OPERATION OF THE PRODUCT AND THE HAZARDS INVOLVED. SUITABLE FOR DAMP LOCATIONS. MIN 90°C SUPPLY CONDUCTORS.

CE PRODUIT DOIT ÊTRE INSTALLÉ SELON LE CODE D'INSTALLATION PERTINENT, PAR UNE PERSONNE QUI CONNAÎT BIEN LE PRODUIT ET SON FONCTIONNEMENT AINSI QUE LES RISQUES INHÉRENTS. CONVIENT AUX EMPLACEMENTS HUMIDE.

LES FILS D'ALIMENTATION 90°C MIN.