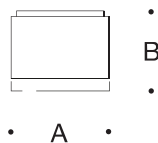


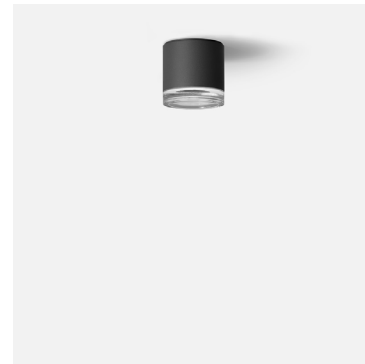
## Tools Required:



## Dimensions

A: 3-3/4

B: 3-3/4



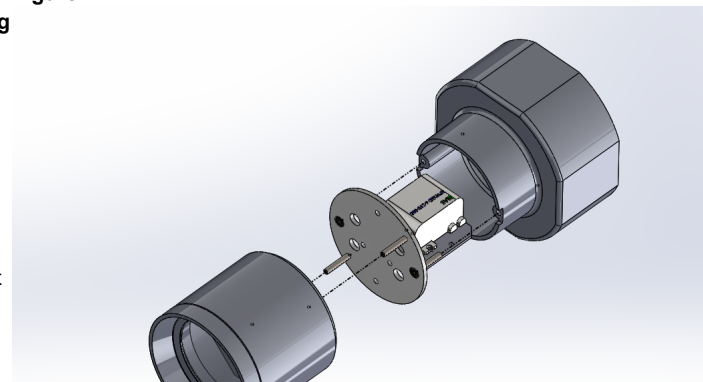
## Overview:

LED Watts: 3.0W  
System Watts: 7.0W  
Controllability: 0-10V dimmable  
Weight: 1.3 lbs.  
Protection Class: IP65

## Notice to Installer:

- BEGA luminaires may be damaged if connected to conduit systems containing water- Article 300-5G of National Electric Code requires that "Conduits or raceways through which moisture may contact energized live parts shall be sealed or plugged at either or both ends".**
- For attachment to ceiling surface, fixture mounts directly to 19 538 small opening wiring box (provided). See Figure 2.  
**WARNING: Fixture is only compatible with BEGA small opening wiring box 19538.**
- In conformance with U.L. Standards 1598, a silicone-based sealant **MUST** be used between the mounting plate edge and supporting wall.
- LEDs are high-quality electronic components! Please avoid touching the light output opening of the LED directly during installation.
- Driver plate located outside of luminaire and will sit inside of small opening wiring box. See Figure 1.

Figure 1:



## Installation: Luminaire

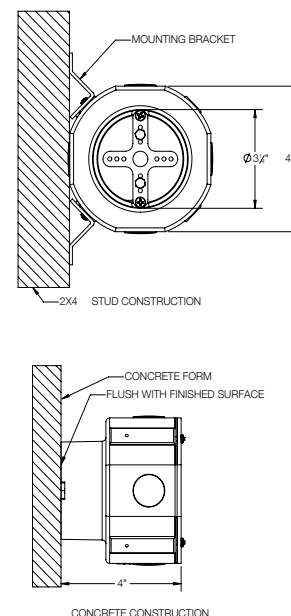
- Remove trim ring by turning counter-clockwise.
- Undo quick disconnect from LED wires and driver wires.
- Remove adapter plate assembly from luminaire base by unscrewing (2) hex head nuts on interior of main fixture casting.
- Reattach quick disconnect between LED and driver wires.  
**NOTE: Make sure LED wires are routed through adapter plate before connecting.**
- Make supply wiring and LED driver connections in 19 538 small opening wiring box:  
MAIN VOLTAGE SUPPLY WIRE TO BLACK LED DRIVER WIRE  
NEUTRAL (COMMON) SUPPLY WIRE TO WHITE LED DRIVER WIRE  
GREEN GROUND WIRE TO GREEN LUMINAIRE WIRE

### Dimming (if applicable):

DIMMING CONTROL WIRE (+) TO POSITIVE DRIVER DIM CONTROL WIRE  
DIMMING CONTROL WIRE (-) TO NEGATIVE DRIVER DIM CONTROL WIRE

- Place a small bead of silicone around the back side of the adapter plate assembly that will come in contact with the finished surface (exterior applications only), then attach adapter plate assembly to 19 538 wiring box using (2) 1/2" counter-sunk screws.
- Place a small bead of silicone around the back side of the luminaire base that will come in contact with the adapter plate assembly (exterior applications only), then re-attach adapter plate assembly to luminaire base.
- Replace luminaire trim ring and lens, making sure the gasket is sealed properly.

Figure 2:



## Accessories

Please refer to the appropriate accessory installation sheet for further instruction when applicable.

## Maintenance:

Clean regularly with solvent-free cleaner removing dirt and debris. Do not use high pressure cleaners.

## Replacement Parts

See label inside of fixture for LED replacement part number.

Consult factory for all other replacement components.

**Product Safety Warnings:**

**THIS PRODUCT MUST BE INSTALLED IN ACCORDANCE WITH THE APPLICABLE INSTALLATION CODE BY A PERSON FAMILIAR WITH THE CONSTRUCTION AND OPERATION OF THE PRODUCT AND THE HAZARDS INVOLVED.**  
**SUITABLE FOR WET LOCATIONS.**  
**SUITABLE FOR MOUNTING WITHIN 1.2 m (4 ft) OF THE GROUND**  
**MIN 60°C SUPPLY CONDUCTORS.**

**CE PRODUIT DOIT ÊTRE INSTALLÉ SELON LE CODE D'INSTALLATION PERTINENT, PAR UNE PERSONNE QUI CONNAÎT BIEN LE PRODUIT ET SON FONCTIONNEMENT AINSI QUE LES RISQUES INHÉRENTS.**  
**CONVIENT AUX EMPLACEMENTS MOUILLÉS.**  
**PEUT ÊTRE INSTALLÉ À MOINS DE 1,2 m (4 pi) DU SOL**  
**LES FILS D'ALIMENTATION 60°C MIN.**