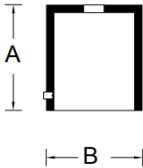


Tools Required:

- 4mm hex key

Overview:

Weight: 1.7 lbs.



Dimensions

A: 4-1/8"

B: 3-3/4"



Notice to Installer:

1. For use with floodlights equipped with 1/2" IPS nipple only.
2. This product must be installed in accordance with the applicable installation code by a person familiar with the construction and operation of the product and the hazards involved.

Figure 1:

Pole cap installation:

1. Loosen 4mm hex screws around the cap
2. Place pole cap on top of pole, and tighten 4mm hex screws until they are tight

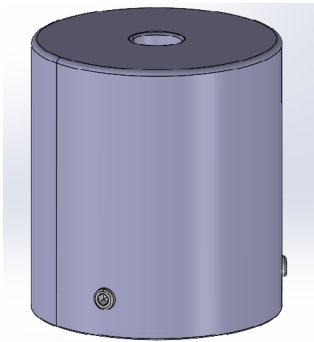
NOTE: Be sure that the mounting structure has sufficient load capacity to support the floodlight and accessory.

3. Mount floodlight to tube clamp by screwing in 1/2" I.P.S. nipple. Tighten set screw to secure.
4. Route wire from floodlight to wiring box.

MAIN VOLTAGE SUPPLY WIRE TO BLACK LUMINAIRE WIRE
NEUTRAL (COMMON) SUPPLY WIRE TO WHITE LUMINAIRE WIRE
WIRE GREEN GROUND WIRE TO GREEN LUMINAIRE WIRE

Dimming (if applicable):

DIMMING CONTROL WIRE (+) TO POSITIVE DRIVER DIM CONTROL WIRE
DIMMING CONTROL WIRE (-) TO NEGATIVE DRIVER DIM CONTROL WIRE



Accessories

Please refer to the appropriate accessory installation sheet for further instruction when applicable.

Maintenance:

Clean regularly with solvent-free cleaner removing dirt and debris. Do not use high pressure cleaners.

Replacement Parts

Consult factory for all other replacement components.