

Application

Accessories for permanent operation of BEGA floodlights. Intended for mounting on trees. Not for use with BEGA wooden poles or bollards.

Materials

Corrosion-resistant 304 grade stainless steel

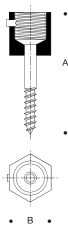
Weight: 1.3 lbs.

Type:

BEGA Product:

Project:

Modified:



Wood screw · Wood screw

	A	B
B70252	3 1/8	1

