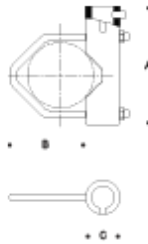


**Tools Required:**

- Adjustable wrench

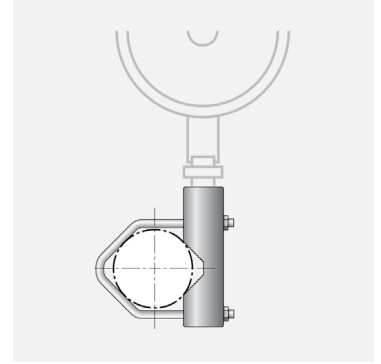
**Overview:**

Weight: 1.8 lbs.



**Dimensions**

- A: 5-1/2"  
B: 1-1/8" - 3-3/8"  
C: 1-1/8"



**Notice to Installer:**

1. For use with floodlights equipped with 1/2" IPS nipple only.
2. This product must be installed in accordance with the applicable installation code by a person familiar with the construction and operation of the product and the hazards involved.
3. For use with structures 1-1/8" diameter minimum to 3-1/8" diameter maximum. See Figure 1.

**WARNING:** Tube clamp mounting accessory is not designed to withstand high vibration installations such as poles, bridges, or tall buildings. Additional safety provisions may be required for such installations and must be provided by the installing contractor.

**Tube clamp installation:**

1. Remove U-bolt from tube clamp by unscrewing two nuts and washers.
2. Attach tube clamp around mounting structure by inserting U-bolt through holes in casting and tighten nuts to secure.

**NOTE:** Be sure that the mounting structure has sufficient load capacity to support the floodlight and accessory.

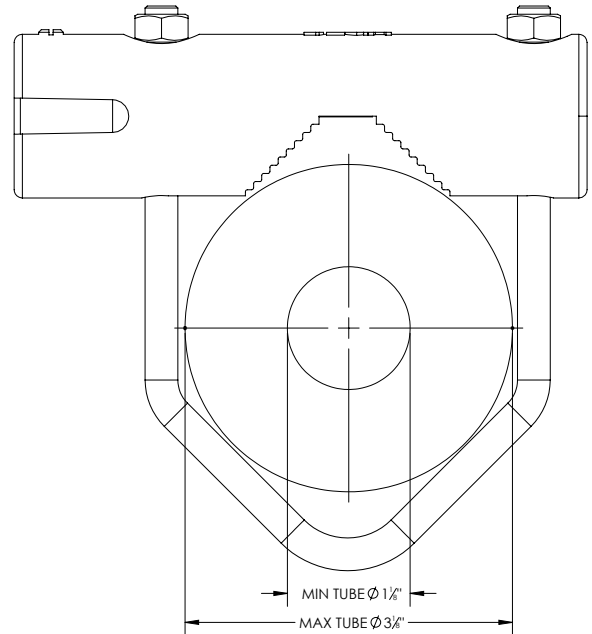
3. Mount floodlight to tube clamp by screwing in 1/2" I.P.S. nipple. Tighten set screw to secure.
4. Route wire from floodlight to wiring box.
5. Make supply wiring and luminaire wiring connections in the octagonal wiring box:

MAIN VOLTAGE SUPPLY WIRE TO BLACK LUMINAIRE WIRE  
NEUTRAL (COMMON) SUPPLY WIRE TO WHITE LUMINAIRE WIRE  
WIRE GREEN GROUND WIRE TO GREEN LUMINAIRE WIRE

Dimming (if applicable):

DIMMING CONTROL WIRE (+) TO POSITIVE DRIVER DIM CONTROL WIRE  
DIMMING CONTROL WIRE (-) TO NEGATIVE DRIVER DIM CONTROL WIRE

**Figure 1:**



**Accessories**

Please refer to the appropriate accessory installation sheet for further instruction when applicable.

**Maintenance:**

Clean regularly with solvent-free cleaner removing dirt and debris. Do not use high pressure cleaners.

**Replacement Parts**

Consult factory for all other replacement components.