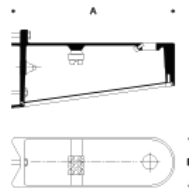


Tools Required:

3mm hex key
5mm hex key
Standard small screwdriver


Dimensions

A: 8-7/8 "

B: 2-3/4 "



Protection Class: IP44

Weight: 1.5 lbs.

Accessory 70 379:

Material: Outrigger arm made of aluminum alloy, mounting hardware made of stainless steel.

Notice to the installer for 70 379 Accessory:

1. For use with floodlight equipped with 1/2" I.P.S. nipple.
2. This product must be installed in accordance with the applicable installation code by a person familiar with the construction and operation of the product and the hazards involved.
3. If pole is supplied by BEGA, the pole will be supplied with threaded stainless steel inserts ready for installation.

NOTE: For poles not supplied by BEGA suitable threaded inserts are required for proper installation.

Accessory 70 379 - installation, pole mounted:

1. Insert silicone cable seal into pole where cable will be fed through.
2. Lead supply wiring through cable seal in pole and into outrigger arm.
3. Remove cover from outrigger arm splice compartment by unscrewing 3mm hex head screw.
4. Attach outrigger arm to pole using the M8 x 35mm hex head mounting hardware (supplied by BEGA).
5. Route floodlight cable into outrigger arm through threaded drilling.
6. Attach 1/2" I.P.S. nipple equipped floodlight to arm by screwing mounting bush into female thread on arm.
7. Secure floodlight by tightening the 3mm hex head screw in the splice compartment.
8. Make supply wiring and luminaire wiring connections in outrigger arm splice compartment:

MAIN VOLTAGE SUPPLY WIRE TO BLACK LUMINAIRE WIRE
NEUTRAL (COMMON) SUPPLY WIRE TO WHITE LUMINAIRE
WIRE GREEN GROUND WIRE TO GREEN LUMINAIRE WIRE

Dimming (if applicable):

DIMMING CONTROL WIRE (+) TO POSITIVE DRIVER DIM CONTROL WIRE
DIMMING CONTROL WIRE (-) TO NEGATIVE DRIVER DIM CONTROL WIRE

9. Replace splice compartment cover by tightening 3mm hex head screw.

Accessory 70 379 - installation on surfaces:

1. Installation must be suitable for the particular mounting surface and use mounting hardware by others.

