

Pole mount arm · Pole mount arm · 1/2" I.P.S. nipple
floodlights

BEGA

Application

Accessories for permanent operation of BEGA 1/2" I.P.S. nipple mount floodlights. For mounting to poles with a minimum diameter of 2-3/8 ". Requires inserts in the pole for proper attachment.

Materials

Aluminum structure
Stainless steel hardware

Weight: 1.5 lbs.

Finish

All BEGA standard finishes are matte, textured powder coat with minimum 3 mil thickness. BEGA Unidure® finish provides superior fade protection in Black, Bronze, and Silver. BEGA standard White is a super durable polyester powder. Optionally available RAL, custom, and premium colors provided in polyester powder and/or liquid paint.

Available colors

Black (BLK)	Bronze (BRZ)
Silver (SLV)	White (WHT)
RAL:	CUS:

Type:

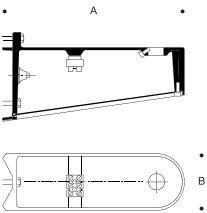
BEGA Product:

Project:

Modified:

Available options

CUS	Custom finish
MGU	Marine grade undercoat
RAL	RAL finish



Pole mount arm · Pole mount arm · 1/2" I.P.S. nipple floodlights

	A	B
B70379	8 7/8	3 1/2

