

Cross beam for multiple floodlights · Cross beam · 3 floodlights

BEGA

Application

Cross beams can be mounted on walls, support structures, and under ceilings. Yoke mounted floodlights are attached to rotatable clamping plates which can be adjusted in 90° increments. Floodlights can be rotated a full 360° on the clamping plate for precise aiming.

Materials

Extruded aluminum  
Die-cast aluminum  
Stainless steel hardware

Weight: 39.9lbs.

Finish

All BEGA standard finishes are matte, textured powder coat with minimum 3 mil thickness. BEGA Unidure® finish provides superior fade protection in Black, Bronze, and Silver. BEGA standard White is a super durable polyester powder. Optionally available RAL, custom, and premium colors provided in polyester powder and/or liquid paint.

Available colors

Black (BLK)	Bronze (BRZ)
Silver (SLV)	White (WHT)
Natural Bronze (NTB)	RAL:
CUS:	

Type:

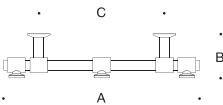
BEGA Product:

Project:

Modified:

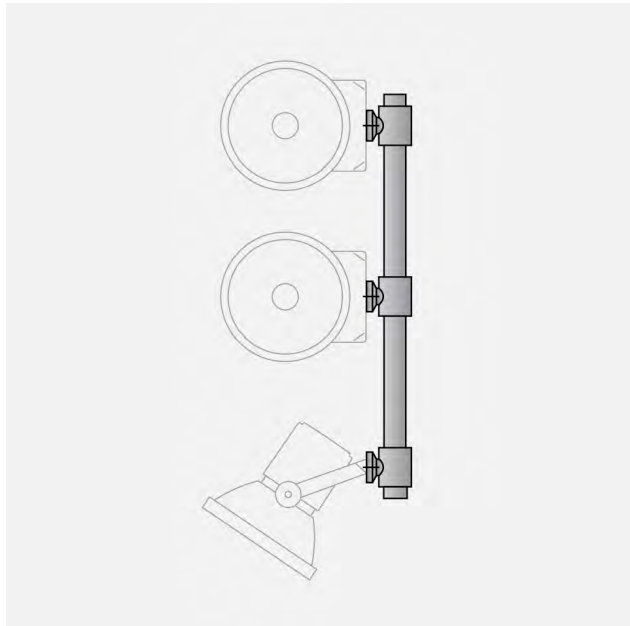
Available options

CUS	Custom finish
MGU	Marine grade undercoat
NTB	Natural bronze (premium finish)
RAL	RAL finish



Cross beam for multiple floodlights · Cross beam · 3 floodlights

	A	B	C
B70761	59 <sup>1</sup> / <sub>2</sub>	11 <sup>5</sup> / <sub>8</sub>	37 <sup>3</sup> / <sub>4</sub>



BEGA 1000 BEGA Way, Carpinteria, CA 93013 (805)684-0533 info@bega-us.com

Due to the dynamic nature of lighting products and the associated technologies, luminaire data on this sheet is subject to change at the discretion of BEGA North America. For the most current technical data, please refer to bega-us.com  
© copyright BEGA 2025 Updated 07/17/25