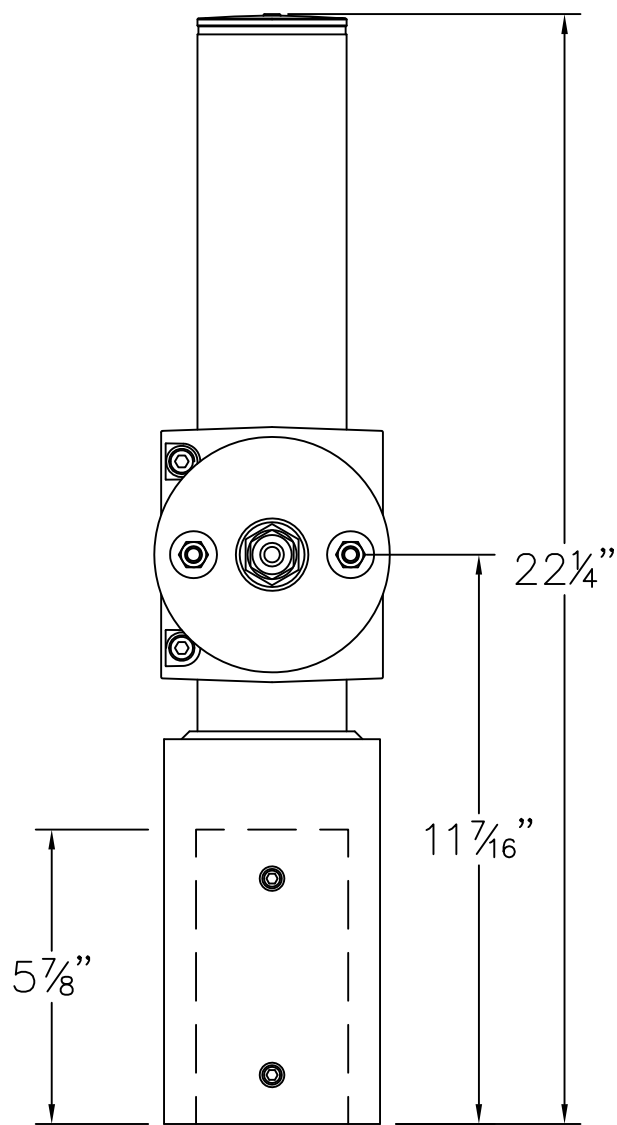
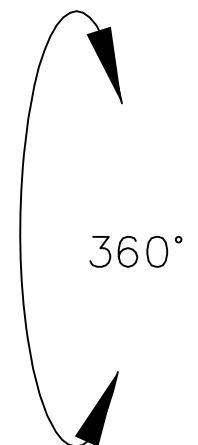
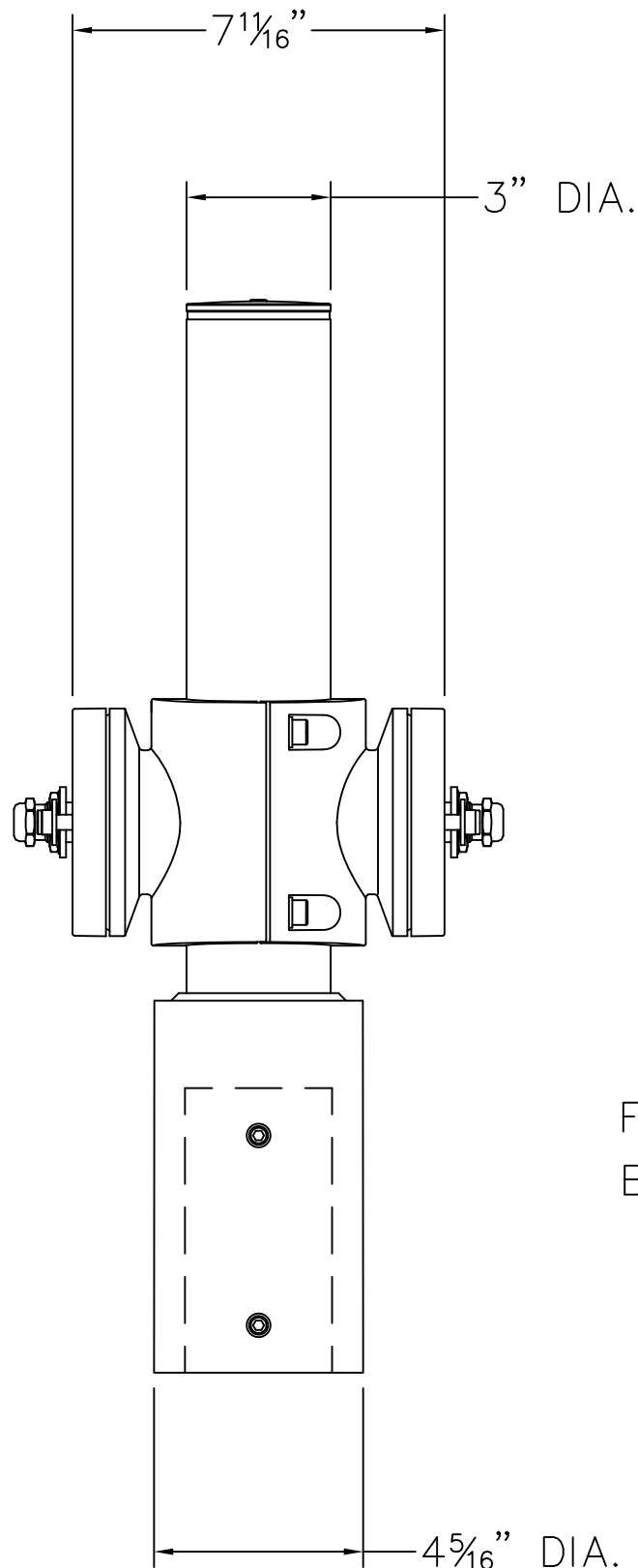


MOUNTING DETAIL ( X 2 )



SLIP FITS 3" DIA.  
POLE (SEE NOTE 4)



FLOODLIGHTS MAY  
BE ROTATED 360°

#### NOTES:

1. ACCESSORY #70 762— SEE SPECIFICATIONS
2. POLE TOP MOUNTING FOR TWO (2) FLOODLIGHTS.
3. STANDARD BEGA FINISHES.
4. CONSIDERATION MUST BE GIVEN BY THE DESIGNER/SPECIFIER TO ASSURE ADEQUACY OF POLE DESIGN TO SAFELY SUPPORT THE WIND LOAD OF POLE TOP WITH FLOODLIGHTS. LIGHT POLE DESIGN REQUIRES CONSIDERATION OF FIELD CONDITIONS SUCH AS (BUT NOT LIMITED TO) WIND ZONE, HEIGHT AND WIND LOADING.

This print contains confidential information which is the property of BEGA/US. By accepting this information, the borrower agrees that it will not be used for any other purpose other than that which is was loaned.

Catalog No.: 70 762

Description: POLE TOP FOR TWO (2) FLOODLIGHTS

Drawn by: ES

Date: 3/8/10

File Name: 70762.dxf

SCALE: NONE — DO NOT SCALE DRAWING

**BEGA**

1000 Bega Way  
Carpinteria, Ca. 93013  
(805) 684-0533