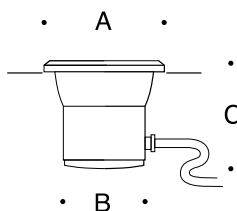


Tools Required:

- Digging tool

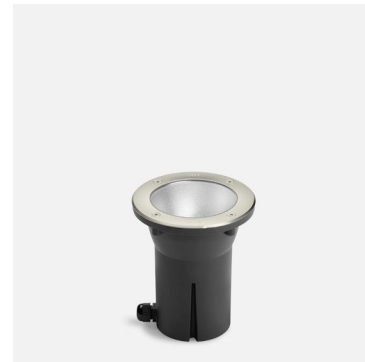
Overview:

LED Watts: 3.0W
 System Watts: 4.2W
 Controllability: Non dimmable
 Weight: 1.9 lbs.
 Protection Class: IP67



Dimensions

A: 4 3/8"
 B: 2 3/8"
 C: 5"



Notice to Installer:

1. BEGA fixtures may be damaged if connected to a conduit system that contains water. Article 300-5G of the National Electric Code requires that "conduits or raceway through which moisture may contact energized live parts shall be sealed or plugged at both ends".
2. Remote 12-24V AC input voltage required for use with BEGA Home and Garden luminaire. Voltage must not drop below 10V AC.
3. Pre-wired with 6' of #18 AWG wire with waterproof gland into housing.
4. Luminaire must be installed 10" or more from pool, spa or fountain.
5. Do not remove the desiccant pouch from the luminaire housing.

Installation:

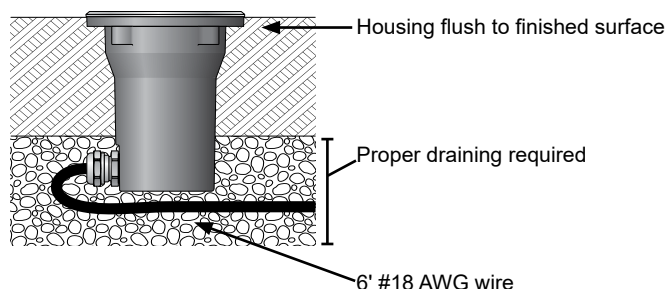
1. Turn main power off before start of installation.
2. Establish planned fixture location and provide 12-24V AC supply wiring.
3. Dig hole at least 5" deep for luminaire. Sufficient drainage (e.g. gravel, stone chippings) must be provided under the luminaire. **[Figure 2]**
4. Install luminaire housing flush to finished surface.
5. Make wiring connections. For maximum wire run lengths see **[Figure 1]**.
6. Wiring connections must be made in a watertight location.
7. Fill soil or gravel around luminaire assuring housing stays level.
8. Turn main power on.

Figure 1: Voltage drop chart

TOTAL SYSTEM WATTS						
	5W	10W	15W	20W	30W	40W
18	366	183	122	92	61	46
16	585	292	195	146	97	73
14	928	464	309	232	155	116
12	1477	738	492	369	246	185
10	2353	1176	784	588	392	294

*Max Run Length (ft) Per Wire Size: 2V drop

Figure 2: Installation



Accessories

Please refer to the appropriate accessory installation sheet for further instruction when applicable.

Low voltage magnetic transformer 536

Maintenance:

Clean regularly with solvent-free cleaner removing dirt and debris. Do not use high pressure cleaners.

Replacement Parts

See label inside of fixture for LED replacement part number.

Consult factory for all other replacement components.

Product Safety Warnings:

THIS PRODUCT MUST BE INSTALLED IN ACCORDANCE WITH THE APPLICABLE INSTALLATION CODE BY A PERSON FAMILIAR WITH THE CONSTRUCTION AND OPERATION OF THE PRODUCT AND THE HAZARDS INVOLVED. SUITABLE FOR WET LOCATIONS. MIN 90°C SUPPLY CONDUCTORS.

CE PRODUIT DOIT ÊTRE INSTALLÉ SELON LE CODE D'INSTALLATION PERTINENT, PAR UNE PERSONNE QUI CONNAÎT BIEN LE PRODUIT ET SON FONCTIONNEMENT AINSI QUE LES RISQUES INHÉRENTS. CONVIENT AUX EMPLACEMENTS MOUILLÉS.

LES FILS D'ALIMENTATION 90°C MIN.