

**Application**  
In-grade floodlight with asymmetric distribution for the illumination of building facades and signage. Designed to bear pressure loads up to 11,000 lbs. from vehicles with pneumatic tires. The luminaires must not be used for traffic lanes where they are subject to horizontal pressure from vehicles braking, accelerating and changing direction.

**Materials**  
Clear safety glass  
Corrosion-resistant 304 grade stainless steel  
High temperature silicone gasket  
Fully potted waterstopper cable  
Mechanically captive stainless steel fasteners  
Aluminum installation housing  
Pure anodized aluminum reflector

**NRTL** listed to North American Standards, suitable for wet locations  
Protection class IP 67

**Weight:** 16.3lbs.

**Electrical**

Operating voltage	120-277V AC
Minimum start temperature	-30° C
LED module wattage	25.3 W
System wattage	30.0 W
Controllability	0-10V dimming down to 1%
Color rendering index	Ra > 80
Luminaire lumens	1914 lm
LED service life (L70)	60000 hrs

**LED color temperature**  
4000K (K4)  
3500K (K35)  
3000K (K3)  
2700K (K27)

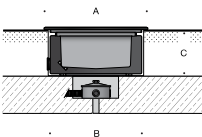
**BEGA** can supply you with suitable LED replacement modules for up to 20 years after the purchase of LED luminaires - see website for details

**Finish**  
#4 brushed stainless steel. Custom colors are not available.

Type:  
BEGA Product:  
Project:  
Modified:

**Available options**  
NSL                  Non-skid lens

**Included (available for pre-shipment)**  
BB7051LED    Installation housing



In-grade luminaire · Asymmetric					
	LED	□	A	B	C
B77024	25.3 W	59°x100°	10	9 <sup>5</sup> / <sub>8</sub>	4 <sup>3</sup> / <sub>4</sub>

