

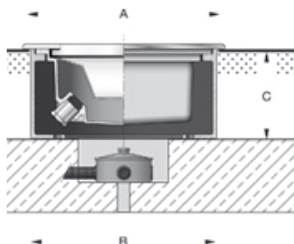
Tools Required:

10mm Nut Driver
5mm Hex Key
M6 Torx Key

CSA certified to U.S. and Canadian standards.
Suitable for wet locations.

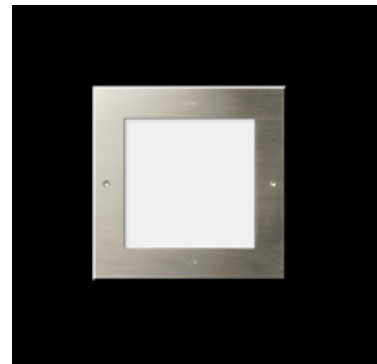
Protection Class: IP67

Weight: 7.3 lbs



Dimensions

A: 6-1/4 "
B: 6 "
C: 4-3/4 "



Notice to Installer for 77 050:

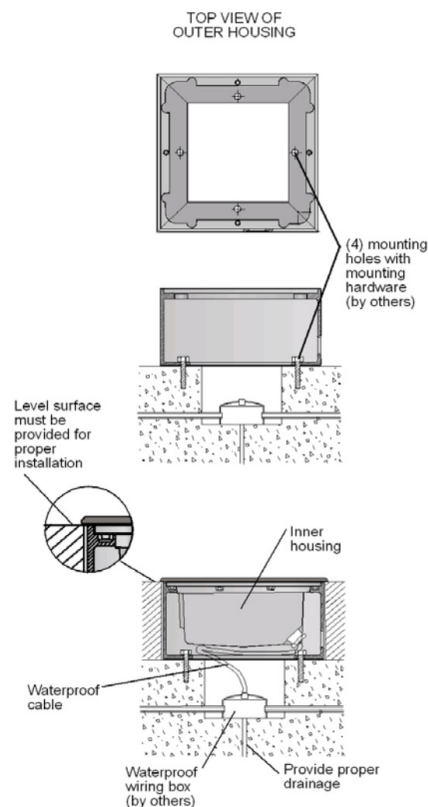
- BEGA luminaires may be damaged if connected to conduit systems containing water - Article 300-5G of National Electric Code requires that "Conduits or raceways through which moisture may contact energized live parts shall be sealed or plugged at either or both ends".**
- A separate wiring box suitable for outdoor locations (Bell #5361-0 or equivalent) for power supply must be provided (by others).
- Proper drainage **MUST** be provided. Failure to do so may result in over-condensation and void warranty.
- For proper installation, HOUSING AND FINISHED SURFACE MUST BE INSTALLED SO THAT THE TOP OF THE HOUSING (BOTTOM OF FACEPLATE) SITS FLUSH OR SLIGHTLY ABOVE THE FINISHED SURFACE.
- For vehicular loads, housing must be anchored to a suitable, load bearing foundation (1-1/2" minimum depth). In all other applications, load bearing foundation should be sufficient to support anticipated load onto fixture.
- WARNING:** LEDs are high quality electrical components. Please avoid touching them directly during installation.

Outer housing installation for 77 050:

- Remove outer housing from inner housing by loosening (2) M6 socket head screws on faceplate and lifting out the inner housing.
- Establish location of wiring box. (These luminaires are pre-wired with (9) feet of waterproof cable and factory sealed to the luminaire inner housing.) Make sure that enough cable is left to lift the inner housing out of the outer housing for relamping.
- Establish foundation for anchorage and provide proper drainage.
- Use (4) mounting holes in the bottom of outer housing to anchor it to a suitable foundation using hardware (by others). The top edge of the outer housing must be flush with the finished surface. Use grout, nuts, and washers for leveling.

Inner housing installation for 77 050:

- Unscrew (2) M6 Torx head screws on faceplate of fixture.
- Remove inner housing assembly from outer housing.
NOTE: DO NOT OPEN INNER HOUSING.
- Run 5-wire cable from inner housing assembly through outer housing to make supply wiring and cable connections inside wiring box:
MAIN VOLTAGE SUPPLY WIRE TO BLACK LUMINAIRE WIRE
NEUTRAL (COMMON) SUPPLY WIRE TO WHITE LUMINAIRE WIRE
GREEN GROUND WIRE TO GREEN LUMINAIRE WIRE
- Replace inner housing assembly and orient correctly (adjustable at 90 degree intervals) when placing into outer housing.
- Tighten (2) M6 Torx head screws to attach inner housing assembly to outer housing.



NOTE: Graphics are generic. Please see fixture submittal drawing for more detail.
www.bega-us.com

Relamping/Maintenance
No relamping required.

Accessories
Please refer to the appropriate accessory installation sheet for further instruction when applicable.

Replacement Parts

Description	Part No
Diffuser	140652+R
Gasket	831083
Driver (120-277V)	76023
LED (3000K)	LED-0255/830
LED (4000K)	LED-0255/840

Lamp: 2.1W LED

In the interest of product improvement, BEGA reserves the right to make technical changes without notice.