

Application
In-grade location luminaire for wayfinding and general illumination. Designed to bear pressure loads up to 11,000 lbs. from vehicles with pneumatic tires. The luminaires must not be used for traffic lanes where they are subject to horizontal pressure from vehicles braking, accelerating and changing direction.

Materials
Clear safety glass with white ceramic coating
Corrosion-resistant 304 grade stainless steel
Fully potted waterstopper cable
High temperature silicone gasket
Mechanically captive stainless steel fasteners
Aluminum installation housing

NRTL listed to North American Standards, suitable for wet locations
Protection class IP 67

Weight: 7.3 lbs.

Electrical
Operating voltage 120-277VAC
Minimum start temperature -30° C
LED module wattage 2.1 W
System wattage 3.4 W
Controllability 0-10V dimmable
Color rendering index Ra > 80
Luminaire lumens 47 lm
LED service life (L70) 60000hrs

LED color temperature
4000K (K4)
3500K (K35)
3000K (K3)
2700K (K27)

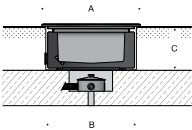
BEGA can supply you with suitable LED replacement modules for up to 20 years after the purchase of LED luminaires - see website for details

Finish
#4 brushed stainless steel. Custom colors are not available.

Type:
BEGA Product:
Project:
Modified:

Available options
NSL Non-skid lens

Included (available for pre-shipment)
BB7050LED Installation housing



In-grade luminaire · Location luminaire				
	LED	A	B	C
B77050	2.1 W	6 1/4	6	4 3/4

