

Application

In-grade location luminaires. These luminaires are designed to bear pressure loads up to 4400 lbs. from vehicles with pneumatic tires. The luminaires must not be used for traffic lanes where they are subject to horizontal pressure from vehicles braking, accelerating and changing direction.

Materials

- Clear safety glass with white ceramic coating
- Corrosion-resistant 304 grade stainless steel
- Fully potted waterstopper cable
- Mechanically captive stainless steel fasteners
- High temperature silicone gasket
- Pure anodized aluminum reflector

NRTL listed to North American Standards, suitable for wet locations
Protection class IP 68

Weight: 6.6 lbs.

Electrical

Operating voltage	120-277VAC
Minimum start temperature	-40° C
LED module wattage	3.9W
System wattage	5.0W
Controllability	0-10V dimmable
Color rendering index	Ra > 80
Luminaire lumens	125lm
LED service life (L70)	60000hrs

LED color temperature

- 4000K (K4)
- 3500K (K35)
- 3000K (K3)
- 2700K (K27)

BEGA can supply you with suitable LED replacement modules for up to 20 years after the purchase of LED luminaires - see website for details

Finish

#4 brushed stainless steel. Custom colors are not available.

Type:

BEGA Product:

Project:

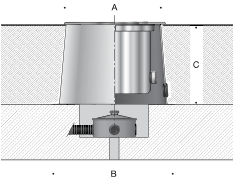
Modified:

Available options

- | | |
|-----|---------------|
| FSC | Fusing |
| NSL | Non-skid lens |

Included (available for pre-shipment)

- | | |
|------|----------------------|
| B687 | Installation housing |
|------|----------------------|



In-grade luminaire · Location luminaire				
	LED	A	B	C
B77057	3.9W	9 ⁵ / ₈	12 ¹ / ₄	8 ¹ / ₄

