

Application

In-grade luminaire to illuminate ground surfaces. Equipped with four 60° light apertures in all directions. These luminaires affix to a recessed BEGA junction box, supplied with luminaire, eliminating the need for deep recessed housings.

Materials

Borosilicate glass  
Marine grade, copper free (≤0.3% copper content) A360.0 aluminum alloy  
High temperature silicone gasket  
Pure anodized aluminum reflector

NRTL listed to North American Standards, suitable for wet locations  
Protection class IP 67

Weight: 2.1 lbs.

Electrical

LED module wattage	2.5 W
System wattage	2.5 W
Color rendering index	Ra > 80
Luminaire lumens	19 lm
LED service life (L70)	60000 hrs

LED color temperature

4000K (K4)  
3500K (K35)  
3000K (K3)  
2700K (K27)

BEGA can supply you with suitable LED replacement modules for up to 20 years after the purchase of LED luminaires - see website for details

Finish

All BEGA standard finishes are matte, textured powder coat with minimum 3 mil thickness. BEGA Unidure® finish provides superior fade protection in Black, Bronze, and Silver. BEGA standard White is a super durable polyester powder. Optionally available RAL, custom, and premium colors provided in polyester powder and/or liquid paint.

Available colors

Black (BLK)	Bronze (BRZ)
Silver (SLV)	White (WHT)
Natural Bronze (NTB)	RAL:
CUS:	

Type:

BEGA Product:

Project:

Modified:

Available options

CUS	Custom finish
FSC	Fusing
MGU	Marine grade undercoat
NTB	Natural bronze (premium finish)
RAL	RAL finish

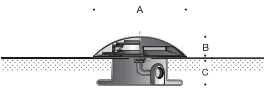
Available accessories

B19580	Remote driver box · Static white
B19591	Remote driver box · Static white

See individual accessory spec sheet for details.

Included (available for pre-shipment)

BB7069LED Installation housing



Ground-mounted luminaire · Four 60° ports · 24V DC

	LED	A	B	C
B77070	2.5 W	6 1/4	1 1/2	1 3/4

